

# Circulation Research

JOURNAL OF THE AMERICAN HEART ASSOCIATION

American Heart  
Association®   
*Learn and Live*<sup>SM</sup>

## **Inhibition of Elevated Ca<sup>2+</sup>/Calmodulin-Dependent Protein Kinase II Improves Contractility in Human Failing Myocardium**

Samuel Sossalla, Nina Fluschnik, Hanna Schotola, Katharina R. Ort, Stefan Neef, Timo Schulte, Katrin Wittköpper, André Renner, Jan D. Schmitto, Jan Gummert, Ali El-Armouche, Gerd Hasenfuss and Lars S. Maier

*Circ. Res.* published online Sep 2, 2010;

DOI: 10.1161/CIRCRESAHA.110.220418

Circulation Research is published by the American Heart Association, 7272 Greenville Avenue, Dallas, TX 75214

Copyright © 2010 American Heart Association. All rights reserved. Print ISSN: 0009-7330. Online ISSN: 1524-4571

The online version of this article, along with updated information and services, is located on the World Wide Web at:

<http://circres.ahajournals.org>

Data Supplement (unedited) at:

<http://circres.ahajournals.org/cgi/content/full/CIRCRESAHA.110.220418/DC1>

Subscriptions: Information about subscribing to Circulation Research is online at  
<http://circres.ahajournals.org/subscriptions/>

Permissions: Permissions & Rights Desk, Lippincott Williams & Wilkins, a division of Wolters Kluwer Health, 351 West Camden Street, Baltimore, MD 21202-2436. Phone: 410-528-4050. Fax: 410-528-8550. E-mail:  
[journalpermissions@lww.com](mailto:journalpermissions@lww.com)

Reprints: Information about reprints can be found online at  
<http://www.lww.com/reprints>

# Inhibition of Elevated $\text{Ca}^{2+}$ /Calmodulin-Dependent Protein Kinase II Improves Contractility in Human Failing Myocardium

Samuel Sossalla, Nina Fluschnik, Hanna Schotola, Katharina R. Ort, Stefan Neef, Timo Schulte, Katrin Wittköpper, André Renner, Jan D. Schmitto, Jan Gummert, Ali El-Armouche, Gerd Hasenfuss, Lars S. Maier

**Rationale:** Heart failure (HF) is known to be associated with increased  $\text{Ca}^{2+}$ /calmodulin-dependent protein kinase (CaMK)II expression and activity. There is still controversial discussion about the functional role of CaMKII in HF. Moreover, CaMKII inhibition has never been investigated in human myocardium.

**Objective:** We sought to investigate detailed CaMKII $\delta$  expression in end-stage failing human hearts (dilated, as well as ischemic, cardiomyopathy) and the functional effects of CaMKII inhibition on contractility.

**Methods and Results:** Expression analysis revealed that CaMKII $\delta$ , both cytosolic  $\delta_C$  and nuclear  $\delta_B$  splice variants, were significantly increased in both right and left ventricles from patients with dilated or ischemic cardiomyopathy versus nonfailing. Experiments with isometrically twitching trabeculae revealed significantly improved force frequency relationships in the presence of CaMKII inhibitors (KN-93 and AIP). Increased postrest twitches after CaMKII inhibition indicated an improved sarcoplasmic reticulum (SR)  $\text{Ca}^{2+}$  loading. This was confirmed in isolated myocytes by a reduced SR  $\text{Ca}^{2+}$  spark frequency and hence SR  $\text{Ca}^{2+}$  leak, resulting in increased SR  $\text{Ca}^{2+}$  load when inhibiting CaMKII. Ryanodine receptor type 2 phosphorylation at Ser2815, which is known to be phosphorylated by CaMKII thereby contributing to SR  $\text{Ca}^{2+}$  leak, was found to be markedly reduced in KN-93-treated trabeculae. Interestingly, CaMKII inhibition did not influence contractility in nonfailing sheep trabeculae.

**Conclusions:** The present study shows for the first time that CaMKII inhibition acutely improves contractility in human HF where CaMKII $\delta$  expression is increased. The mechanism proposed consists of a reduced SR  $\text{Ca}^{2+}$  leak and consequently increased SR  $\text{Ca}^{2+}$  load. Thus, CaMKII inhibition appears to be a possible therapeutic option for patients with HF and merits further investigation. (*Circ Res.* 2010;107:00-00.)

**Key Words:**  $\text{Ca}^{2+}$ /calmodulin-dependent kinase II ■ heart failure ■ contractility ■ calcium ■ sarcoplasmic reticulum  $\text{Ca}^{2+}$  leak ■ ryanodine receptor

Heart failure (HF) is accompanied by systolic and diastolic contractile dysfunction caused by abnormalities in intracellular  $\text{Ca}^{2+}$  handling and structural remodeling. Several targets associated with the remodeling processes have been identified. The sarcoplasmic reticulum (SR)  $\text{Ca}^{2+}$ -ATPase (SERCA) protein levels have been reported to be downregulated and paralleled by a reduced SR  $\text{Ca}^{2+}$  uptake capacity in the human failing heart.<sup>1-3</sup> In contrast, the sarcolemmal  $\text{Na}^+/\text{Ca}^{2+}$  exchanger protein expression and activity were found to be increased thereby even more effectively competing with the reduced SERCA activity for cytosolic  $\text{Ca}^{2+}$ -removal.<sup>3,4</sup> The net effect is an impaired SR  $\text{Ca}^{2+}$  loading, which leads to smaller intracellular  $\text{Ca}^{2+}$

transients and elevated diastolic  $\text{Ca}^{2+}$  levels in HF.<sup>5</sup> Thus, impaired contractility with reduced contractile force and diastolic dysfunction are well-accepted determinants in HF.<sup>6</sup>

Intracellular  $\text{Ca}^{2+}$  homeostasis of cardiac myocytes is also regulated by phosphorylation of several key  $\text{Ca}^{2+}$ -handling proteins. An important regulatory kinase is the  $\text{Ca}^{2+}$ /calmodulin-dependent protein kinase (CaMK)II.<sup>7</sup> It is a serine/threonine protein kinase that modulates several intracellular  $\text{Ca}^{2+}$ -handling proteins such as SR  $\text{Ca}^{2+}$ -release channels (ryanodine receptors, RyR2), phospholamban (PLB), and L-type  $\text{Ca}^{2+}$  channels (LTCCs) but also  $\text{Na}^+$  channels.<sup>7</sup> The predominant cardiac isoform is CaMKII $\delta$ , with the splice variant  $\delta_C$  being primarily cytosolic and  $\delta_B$  being localized to

Original received March 17, 2010; revision received August 21, 2010; accepted August 23, 2010. In July 2010, the average time from submission to first decision for all original research papers submitted to *Circulation Research* was 12.9 days.

From the Departments of Cardiology and Pneumology (S.S., N.F., K.R.O., S.N., T.S., G.H., L.S.M.), Anesthesiology (H.S.), Pharmacology (K.W., A.E.-A.), Georg-August-University Göttingen, Germany; Department of Cardiovascular Surgery (A.R., J.G.), Heart and Diabetes Center, Bad Oeynhausen, Germany; and Division of Cardiac Surgery (J.D.S.), Brigham and Women's Hospital, Harvard Medical School, Boston, Mass.

Correspondence to Lars S. Maier, MD, Heisenberg Professor, Department of Cardiology and Pneumology/Heart Center, Georg-August-University Göttingen, Robert-Koch-Str. 40, 37075 Göttingen, Germany. E-mail lmaier@med.uni-goettingen.de

© 2010 American Heart Association, Inc.

*Circulation Research* is available at <http://circres.ahajournals.org>

DOI: 10.1161/CIRCRESAHA.110.220418

**Non-standard Abbreviations and Acronyms**

<b>CaMK</b>	Ca <sup>2+</sup> /calmodulin-dependent protein kinase
<b>DCM</b>	dilated cardiomyopathy
<b>FFR</b>	force frequency relationship
<b>HF</b>	heart failure
<b>I-1</b>	phosphatase inhibitor-1
<b>ICM</b>	ischemic cardiomyopathy
<b>LTCC</b>	L-type Ca <sup>2+</sup> channel
<b>LV</b>	left ventricle
<b>NF</b>	nonfailing
<b>PKA</b>	protein kinase A
<b>PLB</b>	phospholamban
<b>PP</b>	protein phosphatase
<b>RV</b>	right ventricle
<b>RyR</b>	ryanodine receptor
<b>SERCA</b>	sarcoplasmic reticulum Ca <sup>2+</sup> -ATPase
<b>SR</b>	sarcoplasmic reticulum

the nucleus.<sup>8,9</sup> Because CaMKII accelerates relaxation via PLB phosphorylation and increased CaMKII protein levels correlate positively with impaired ejection fraction in the myocardium of patients with HF, it was proposed that elevated CaMKII expression and activity may be a compensatory mechanism to keep hearts from complete failure.<sup>9</sup> In contrast, CaMKII may be even involved in the pathogenesis of hypertrophy and HF because CaMKII transgenic mice develop severe HF.<sup>10</sup> There is a direct association of CaMKII and the RyR2 increasing diastolic SR Ca<sup>2+</sup> leak despite (or actually leading to) reduced SR Ca<sup>2+</sup> load in CaMKII transgenic mice.<sup>10,11</sup> SR Ca<sup>2+</sup> leak could be markedly reduced by CaMKII inhibition in this mouse HF model, as well as in rabbit HF models, providing evidence for a direct relation between CaMKII activity and reduced SR Ca<sup>2+</sup> load caused by increased Ca<sup>2+</sup> spark frequency.<sup>10,12,13</sup>

Since Kirchhefer et al reported that CaMKII activity was increased in the left ventricles (LVs) of HF patients with dilated cardiomyopathy (DCM) in 1999,<sup>9</sup> nothing was published about the role of CaMKII in human failing myocardium. Moreover, the function of CaMKII and its regulatory mechanisms in the failing heart are still a controversial issue. Because all functional studies to date were performed in animal models and knowledge about regional CaMKII expression in human myocardium is rare, it remains unclear whether and how CaMKII inhibition actually alters intracellular Ca<sup>2+</sup> handling and myocardial contractility. Thus, the present study investigated CaMKII expression in DCM and ischemic cardiomyopathy (ICM) human LV and right ventricle (RV) myocardium. The second objective was to determine the functional effects of CaMKII by pharmacological CaMKII inhibition in HF.

**Methods**

An expanded Methods section is available in the Online Data Supplement at <http://circres.ahajournals.org>.

**Human Myocardial Tissue**

Experiments were performed with myocardium from 43 end-stage failing hearts (New York Heart Association heart failure classification IV; ICM, n=25; DCM, n=15; other, n=3) and 12 nonfailing (NF) donor hearts that could not be transplanted for technical reasons. Control subjects had no history of heart disease and had normal LV function.

**Large Animal Model**

Four sheep were sedated with Telazol (6 mg/kg) and were endotracheally intubated. Anesthesia was maintained with 1% to 2% isoflurane. The hearts were explanted via a left thoracotomy, which was performed through the fourth intercostal space.

**Trabeculae Preparation and Experiments**

Thin ventricular trabeculae were isolated from the RV of human end-stage failing hearts.<sup>14–16</sup> For isometric force recordings, trabeculae were superfused with Krebs–Henseleit solution and connected to a force transducer.

**Myocyte Isolation**

Chunk isolation was performed with LV myocardial slices using collagenase (Worthington type 2; 250 U/mg) and trypsin (25% trypsin). Only elongated cells with cross-striations and without granulation were selected for experiments.

**Intracellular Ca<sup>2+</sup> Imaging****Measurement of Ca<sup>2+</sup> Sparks**

Isolated myocytes were incubated with 10 μmol/L Fluo-3AM, which also contained either CaMKII inhibitors or control. Ca<sup>2+</sup> spark measurements were performed with a laser-scanning confocal microscope. During continuous superfusion of the chamber, spark frequency was measured after loading the SR with Ca<sup>2+</sup> by repetitive field stimulation. Ca<sup>2+</sup> spark size was calculated as product of amplitude (F/F<sub>0</sub>), duration and width. From this, we inferred the average leak per cell by multiplication of Ca<sup>2+</sup> spark size with the mean spark frequency of the respective cell.

**Determination of SR Ca<sup>2+</sup> Content**

Myocytes were field stimulated at 1 Hz, and SR Ca<sup>2+</sup> content was assessed by caffeine-induced Ca<sup>2+</sup> transients. These amplitudes were used as a measure for SR Ca<sup>2+</sup> content.<sup>16</sup>

**Western Blots**

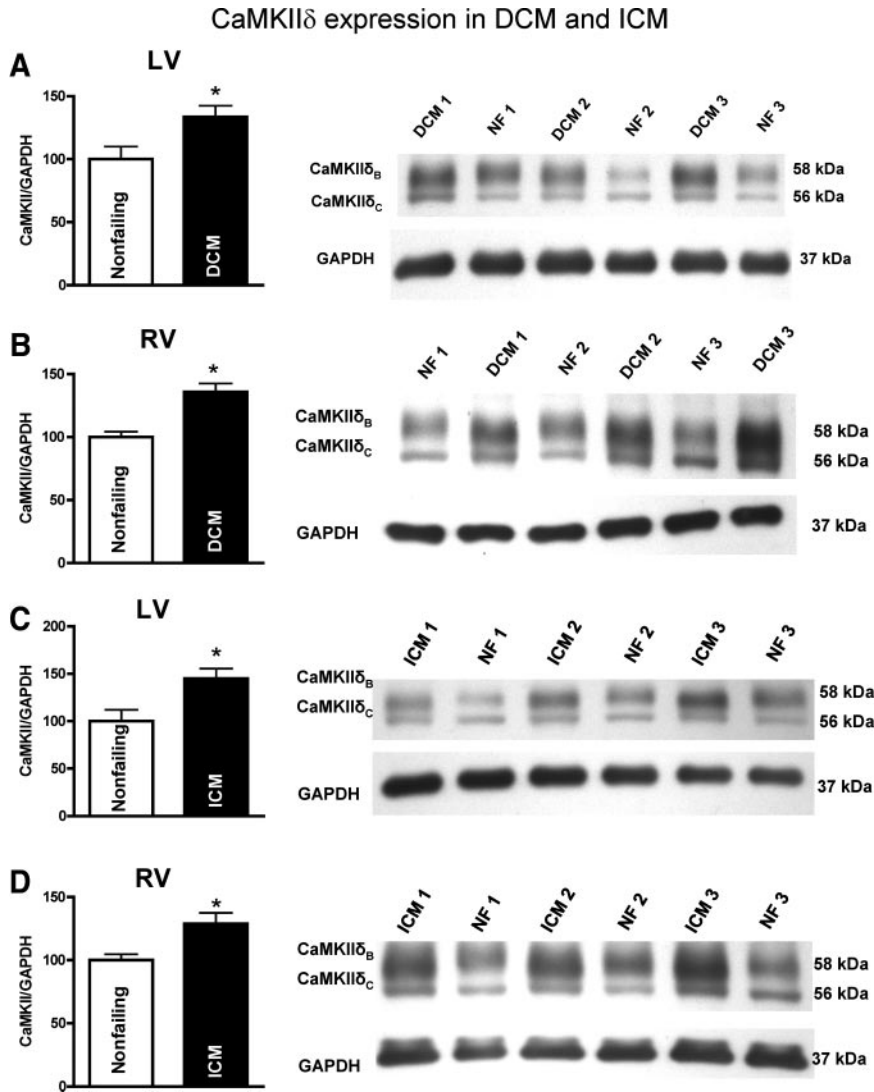
Ventricular myocardium was homogenized. Protein concentration was determined by BCA assay (Pierce Biotechnology). Denatured tissue were subjected to Western blotting using different antibodies. Chemiluminescent detection was performed with Immobilon Western (Millipore). Phosphorylation values were normalized to protein expression.

**Data Analysis and Statistics**

Force values were normalized to the cross-sectional area of the trabeculae (width×thickness×π/4) and expressed in mN/mm<sup>2</sup>. All data are expressed as means±SEM. Student's *t* test or 2-way repeated-measures ANOVA with Holm–Sidak tests were used to test for significance. A value of *P*<0.05 was considered significant.

**Results****CaMKII Expression in Human Heart Failure**

To further extend the knowledge about CaMKIIδ expression and distribution between LV and RV, we performed expres-



**Figure 1. Western blots showing increased CaMKII $\delta$  expression in human heart failure.** **A**, CaMKII $\delta$  expression levels are significantly increased in LV myocardium from patients with DCM vs NF (n=10 vs 8). **B**, Similar differences were found in the RV (n=8 vs 6). **C**, In LV myocardium from patients with ICM, CaMKII $\delta$  expression levels were also markedly increased vs NF myocardium (n=12 each). **D**, CaMKII $\delta$  levels in RV were significantly increased in ICM myocardium compared with NF control (n=6 each). \* $P < 0.05$  vs NF.

sion analysis in human end-stage myocardium from hearts with DCM and ICM compared with NF (LV and RV, respectively) donor hearts. Figure 1A shows a typical Western blot of CaMKII $\delta$ . The average LV CaMKII $\delta$  expression in DCM was elevated by  $33.5 \pm 8.9\%$  (n=10) versus NF controls (n=8,  $P < 0.05$ ) when normalized to GAPDH). Similar results were obtained in DCM with RV CaMKII $\delta$  being increased by  $35.8 \pm 6.8\%$  (n=8) compared with NF (n=6,  $P < 0.05$ ; Figure 1B).

Furthermore, we show that ICM is also associated with significantly upregulated CaMKII $\delta$  expression in both heart chambers (Figure 1C and 1D). LV CaMKII $\delta$  expression was increased by  $45.1 \pm 12.9\%$  (n=12 each,  $P < 0.05$ ) compared with NF and by  $28.9 \pm 9.5\%$  in RV myocardium versus NF (n=6 each,  $P < 0.05$ ). Of note, in DCM, as well as in ICM, a similar elevation of both splice variants CaMKII $\delta_C$  and CaMKII $\delta_B$  was found (Table 1) independent of LV or RV tissue. Finally, we also investigated the CaMKII $\gamma$  isoform and found an increase of  $43.1 \pm 12.7\%$  in LV failing myocardium ( $P < 0.05$ , n=9 versus 8; data not shown).

**Effects of CaMKII Inhibition on Contractility**

Functional experiments were always performed using paired isolated trabeculae of the same area of the same heart. Twitch force was not different at baseline conditions (1 Hz) before incubation with the compounds being  $6.6 \pm 1.6$  mN/mm<sup>2</sup> for the KN-92 control group and  $6.8 \pm 1.1$  mN/mm<sup>2</sup> for those that were incubated with KN-93 (n=14 trabeculae of 9 hearts each,  $P = 0.9$ ).

Because it is known that CaMKII activity increases with higher frequencies, we obtained force frequency relationships

**Table 1. Detailed Protein Expression Values of CaMKII and Its Splice Variants CaMKII $\delta_C$  (Cytosolic) and  $\delta_B$  (Nuclear) in Human Failing Myocardium From DCM and ICM Origins**

	DCM		ICM	
	LV	RV	LV	RV
Total	133.5 $\pm$ 6.8*	135.8 $\pm$ 6.1*	145.1 $\pm$ 12.9*	128.9 $\pm$ 9.5*
$\delta_C$	151.3 $\pm$ 11.7*	127.4 $\pm$ 9.2*	146.5 $\pm$ 12.8*	151.7 $\pm$ 9.9*
$\delta_B$	130.3 $\pm$ 5.7*	134.4 $\pm$ 5.3*	144.3 $\pm$ 18.7*	131.8 $\pm$ 9.9*

Values are normalized to GAPDH and finally to NF myocardium, which was also normalized to GAPDH before. \* $P < 0.05$  vs nonfailing.



(FFR) in trabeculae stimulated at frequencies that varied between 0.5 to 3 Hz (Figure 2A and 2B).<sup>16</sup> Whereas basal contractility at 0.5 Hz was unchanged in CaMKII inhibited trabeculae ( $4.6 \pm 0.9$  versus  $4.2 \pm 0.8$  mN/mm<sup>2</sup> for KN-93,  $P=0.78$ ), twitch force amplitude was largely increased at higher stimulation frequencies. Figure 2A and 2B shows original registrations of trabeculae stimulated at increasing frequencies in the presence of KN-92 or KN-93. The rather negative FFR in KN-92 control trabeculae changed to a positive FFR in trabeculae in KN-93-treated trabeculae. Twitch force amplitude increased by  $92 \pm 20\%$  for KN-93 and only by  $10 \pm 13\%$  for KN-92 at 2 Hz and by  $101 \pm 33\%$  versus  $-4 \pm 15\%$  at 3 Hz (both frequencies  $P < 0.05$  and ANOVA  $P < 0.05$  compared with KN-92,  $n=14/9$  each; Figure 2C). Of note, the significant increase in force amplitude of KN-93-treated trabeculae was also significant regarding peak force values (data not shown). Also, to exclude unspecific effects of KN-92 (eg, on LTCC), we performed FFR experiments without any drug showing very similar results as compared with KN-92 (data not shown).

In contrast, the beneficial effect of CaMKII inhibition was not associated with significant alterations of diastolic tension at increasing frequencies (Figure 2D).

Similarly, we did not find any influence of CaMKII inhibition on relaxation kinetics of the trabeculae with frequency-dependent acceleration of relaxation being found in both groups to a similar extent (Figure 2E).

To confirm our findings, we additionally performed FFRs using AIP and did find comparable effects (Figure 2F). Twitch force amplitude increased by  $52 \pm 14\%$  for AIP and only by  $9 \pm 11\%$  for controls at 2 Hz (ANOVA  $P < 0.05$ ,  $n=9$  each; Figure 2G), whereas diastolic tension and relaxation time were not statistically changed (Figure 2H and 2I). Control twitch force values of this series are very similar to those that were observed in the presence of KN-92.

Because fresh human NF myocardium is difficult to obtain, we performed experiments with NF myocardium from a large animal. Interestingly we did not see a positive inotropic effect in sheep trabeculae in the presence of KN-93 compared with KN-92 (Figure 3A). Twitch force amplitude relative to 0.5 at 2 Hz was  $205 \pm 48\%$  for KN-93 and  $171 \pm 32\%$  for KN-92 (ANOVA  $P=0.67$ ,  $n=6$  each; Figure 2B), whereas diastolic tension was unchanged (Figure 3C). Figure 3D shows that there was a trend toward a slower relaxation time in the presence of KN-93 that however did not reach statistical significance.

### SR Ca<sup>2+</sup> load Is Increased Because of Inhibition of CaMKII

Periods of 10, 30, and 120 seconds of rest were evaluated and the first twitch was normalized to the last twitch before rest. Original registrations in Figure 4A show that postrest behavior was significantly improved in the presence of KN-93. This effect was more pronounced after long rest intervals. The first twitches after 120 seconds of rest normalized to the last twitches before rest was more than doubled, with an average of  $2.5 \pm 0.4$  in specimens treated

with KN-93 versus  $1.5 \pm 0.3$  in the presence of KN-92 ( $n=12/7$  each,  $P < 0.05$ ; Figure 4B).

This effect may be attributable to an increased SR Ca<sup>2+</sup> load. Therefore, we directly measured SR Ca<sup>2+</sup> content. In the representative original tracings (Figure 4C), KN-93 clearly increased the amplitude of the caffeine-induced Ca<sup>2+</sup> transient. The F/F<sub>0</sub> was  $2.1 \pm 0.3$  for KN-93 compared with  $1.3 \pm 0.1$  for KN-92 ( $n=5/3$  versus  $n=9/3$  cells,  $P < 0.05$ ; Figure 4D). These results indicate that improved contractility of multicellular human failing myocardium may be caused by an improved SR Ca<sup>2+</sup> content in the presence of CaMKII inhibition.

### CaMKII Inhibition Reduces SR Ca<sup>2+</sup> Leak in Human Heart Failure

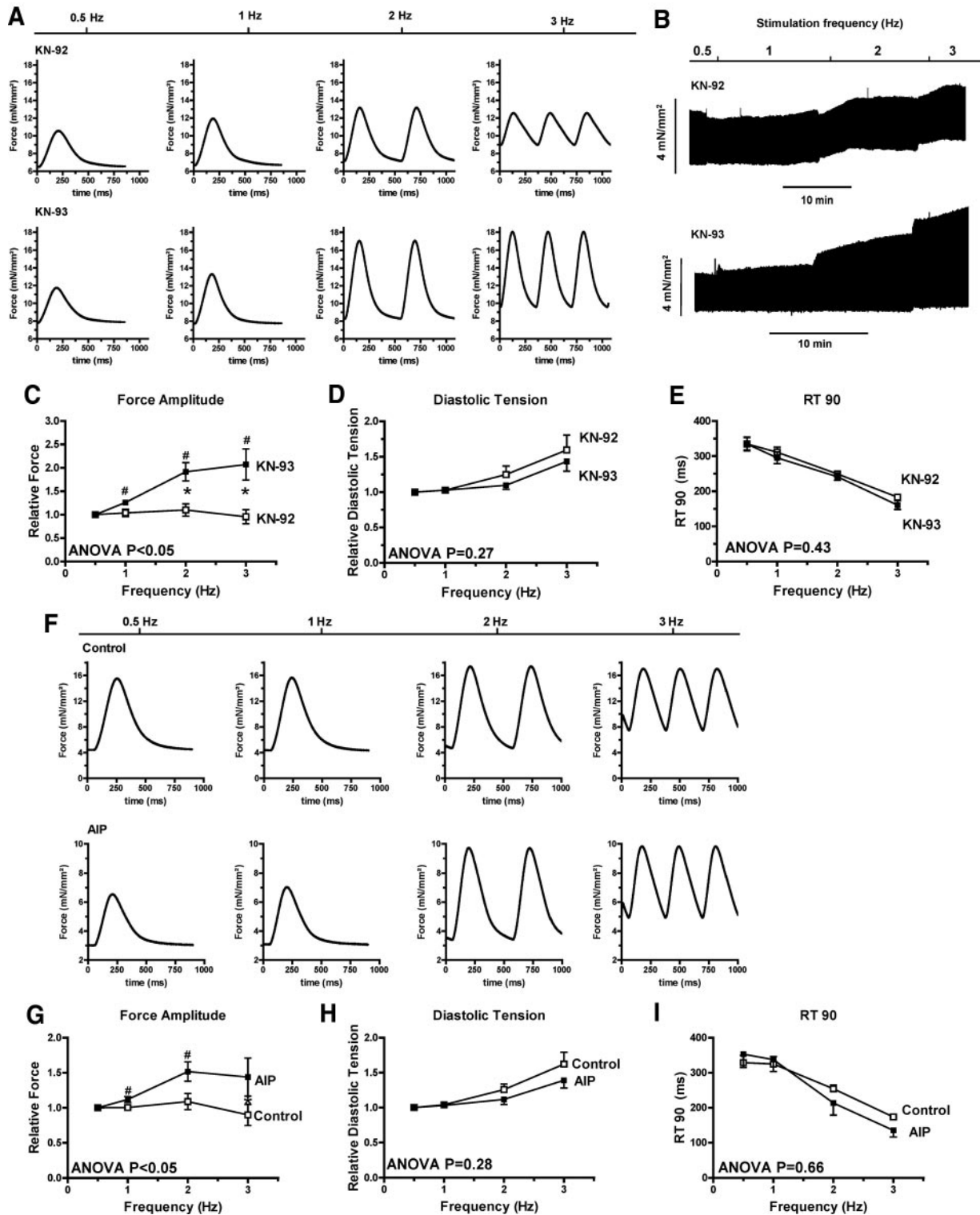
To investigate whether the increased SR Ca<sup>2+</sup> content in the presence of CaMKII inhibition may result from a reduced SR Ca<sup>2+</sup> leak we also measured SR Ca<sup>2+</sup> spark frequency. The original line scans in Figure 5A exhibit that Ca<sup>2+</sup> spark frequency was strongly decreased in myocytes that were CaMKII-inhibited. The mean Ca<sup>2+</sup> spark frequency was  $212 \pm 27$  pL<sup>-1</sup> · sec<sup>-1</sup> in KN-92 and  $137 \pm 16$  pL<sup>-1</sup> · sec<sup>-1</sup> in the presence of KN-93 ( $n=31/7$  versus  $n=28/7$  cells,  $P < 0.05$ ; Figure 5B). Moreover, experiments presented in Figure 5C revealed that the Ca<sup>2+</sup> spark duration was also slightly reduced in the presence of KN-93 ( $71.7 \pm 1.2$  versus  $68.0 \pm 1.3$  ms for KN-92,  $P < 0.05$ ). This leads to a significant decrease in total calculated SR Ca<sup>2+</sup> leak in CaMKII-inhibited myocytes by 30% ( $P < 0.05$ ; Figure 5D). Experiments were repeated using another CaMKII inhibitor AIP (55 myocytes versus 51 serving as controls). A total of 47% of the measured myocytes developed SR Ca<sup>2+</sup> sparks under control conditions and only 29% in AIP-treated cells (1 μmol/L,  $P=0.06$ ). We also found comparable results to our KN-93 findings such as a depressed SR Ca<sup>2+</sup> spark frequency from  $300 \pm 42$  pL<sup>-1</sup> · sec<sup>-1</sup> (controls) to  $120 \pm 20$  pL<sup>-1</sup> · sec<sup>-1</sup> in AIP-treated myocytes ( $n=23$  versus 16,  $P < 0.05$ ; Figure 5E and 5F). The total calculated SR Ca<sup>2+</sup> leak was significantly reduced by 39% in the presence of AIP (Figure 5H). Detailed SR Ca<sup>2+</sup> spark parameters are presented in Table 2.

### Altered Phosphorylation Status During CaMKII Inhibition

To verify the efficacy of the used CaMKII-inhibitors, we performed phosphorylation analysis in CaMKII-inhibited trabeculae. A FFR was performed in the presence of KN-93 versus KN-92 or AIP versus control and specimen were immediately frozen away. As presented in Figure 6A, KN-93 led to a downphosphorylation of CaMKII at Thr286 of  $65.8 \pm 11.2\%$  ( $P < 0.05$ ,  $n=7$  each) and in AIP-treated homogenated specimen of  $83.1 \pm 8.2\%$  ( $P < 0.05$ ,  $n=4$  each; Figure 6B).

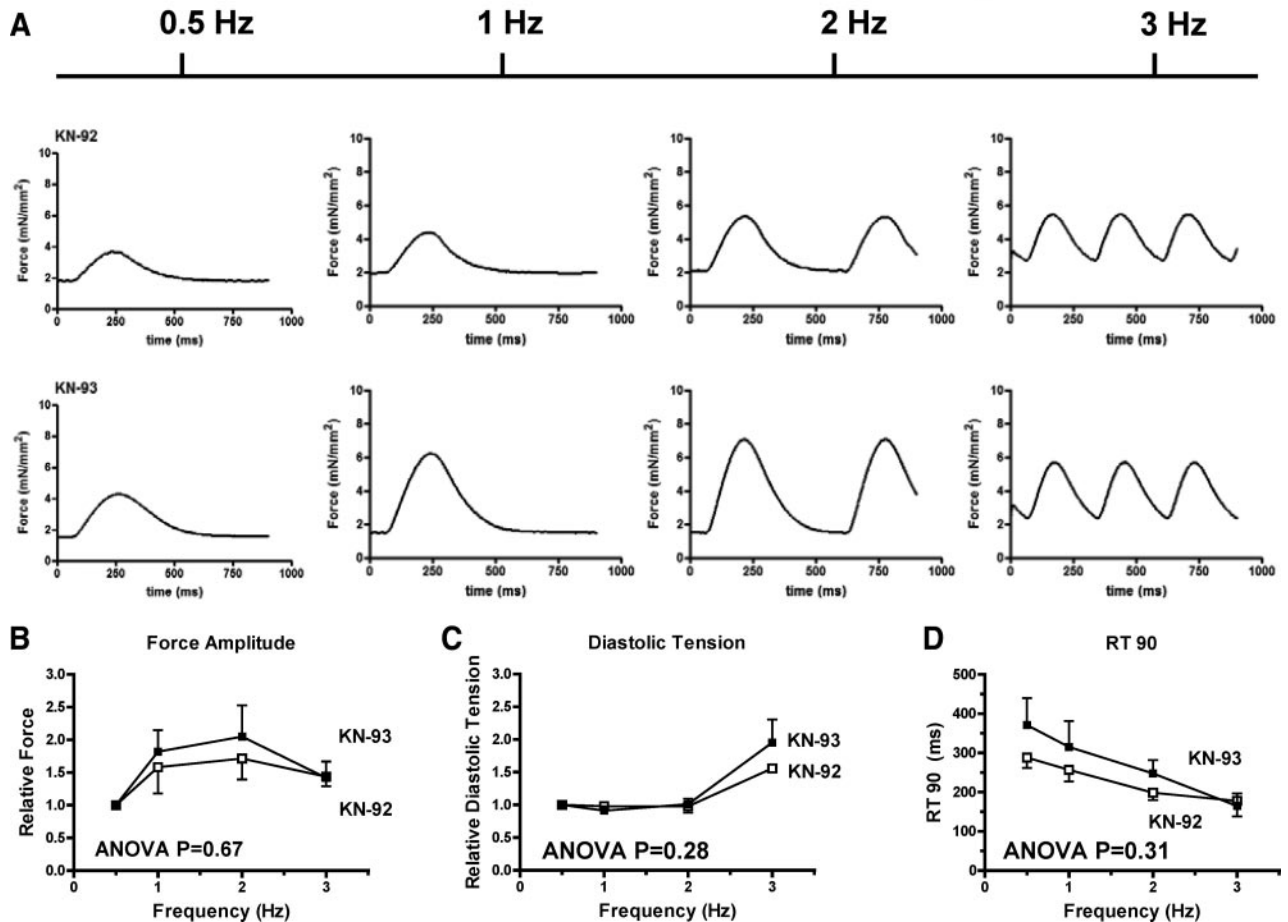
Because relaxation kinetics were unchanged during CaMKII inhibition, we also investigated CaMKII effects on PLB. The CaMKII phosphorylation site at Thr17 of PLB (monomer) was not significantly altered after treatment with

Effects of CaMKII Inhibition on contractility I



**Figure 2. Influence of CaMKII inhibition on contractility of trabeculae during increasing stimulation frequencies.** **A**, Representative single twitches in the presence of KN-92 or KN-93. **B**, An original registration with a slower writing speed nicely shows the positive inotropic effect in the presence of KN-93 but not KN-92. **C**, Mean force amplitudes normalized to the lowest frequency (0.5 Hz absolute values  $4.6 \pm 0.9$  vs  $4.2 \pm 0.8$  mN/mm<sup>2</sup> for KN-93), showing significantly increased force amplitudes at 2 and 3 Hz in the presence of KN-93 vs KN-92 ( $n = 14/9$  each). **D**, Normalized diastolic tension was not significantly different between both groups during increasing frequencies. **E**, Time to 90% relaxation was not changed between KN-93 and KN-92. **F**, Original tracings exhibit a positive inotropic effect in the presence of another CaMKII-inhibitor AIP compared with control. **G**, Mean force amplitudes normalized to the lowest frequency showing significantly increased force amplitudes in the presence of AIP compared with control ( $n = 9$  each). **H and I**, Averaged values of diastolic tension (**H**) and time to 90% of relaxation (**I**) in the presence of AIP. \* $P < 0.05$  vs KN-92 or control (repeated-measures ANOVA and post hoc test); # $P < 0.05$  vs baseline.

## Effects of CaMKII Inhibition on contractility II



**Figure 3.** Influence of CaMKII inhibition on contractility of NF sheep trabeculae during increasing stimulation frequencies. **A**, Original tracings show no difference of contractile force between KN-93 or KN-92. **B through D**, CaMKII inhibition did not affect force amplitudes, diastolic tension, or relaxation time in NF myocardium treated with KN-93 compared with KN-92 ( $n=6$  each).

KN-93, as presented in Figure 6C ( $P=0.48$ ,  $n=8$  each). Similar results were obtained by investigation of a proposed CaMKII phosphorylation site at the LTCC  $\beta_{2a}$  subunit (Thr498).<sup>17</sup> The common p-CaMKII (Thr286) antibody was shown to detect CaMKII-dependent phosphorylation of the LTCC  $\beta_{2a}$  subunit.<sup>17</sup> In the same trabeculae where CaMKII phosphorylation was significantly depressed after treatment with KN-93, we found an unchanged Thr498 phosphorylation status between KN-93- and KN-92-treated trabeculae ( $n=4$  each; Figure 6D).

Finally, we were interested whether the observed effects on SR  $\text{Ca}^{2+}$  leak are mediated via modulation of the RyR2 phosphorylation status. CaMKII is considered to phosphorylate Ser2815<sup>18</sup> rather than Ser2809, which may be also phosphorylated by protein kinase (PK)A.<sup>19–21</sup> In CaMKII inhibited homogenates versus controls, RyR2 phosphorylation (normalized to RyR2 protein levels) was increased at both Ser2809 and Ser2815 sites. Figure 6E shows that CaMKII inhibition lead to a  $42.6 \pm 9.8\%$  ( $n=5/3$  each,  $P<0.05$ ) decrease of RyR2 phosphorylation at Ser2809 and a more pronounced effect at the CaMKII specific binding site Ser2815 of  $74.0 \pm 11.3\%$  ( $n=3/2$  each,  $P<0.05$ ; Figure 6F). Thus, our results suggest that de-

creased SR  $\text{Ca}^{2+}$  leak resulting from CaMKII inhibition may be attributable to reduced RyR2 phosphorylation.

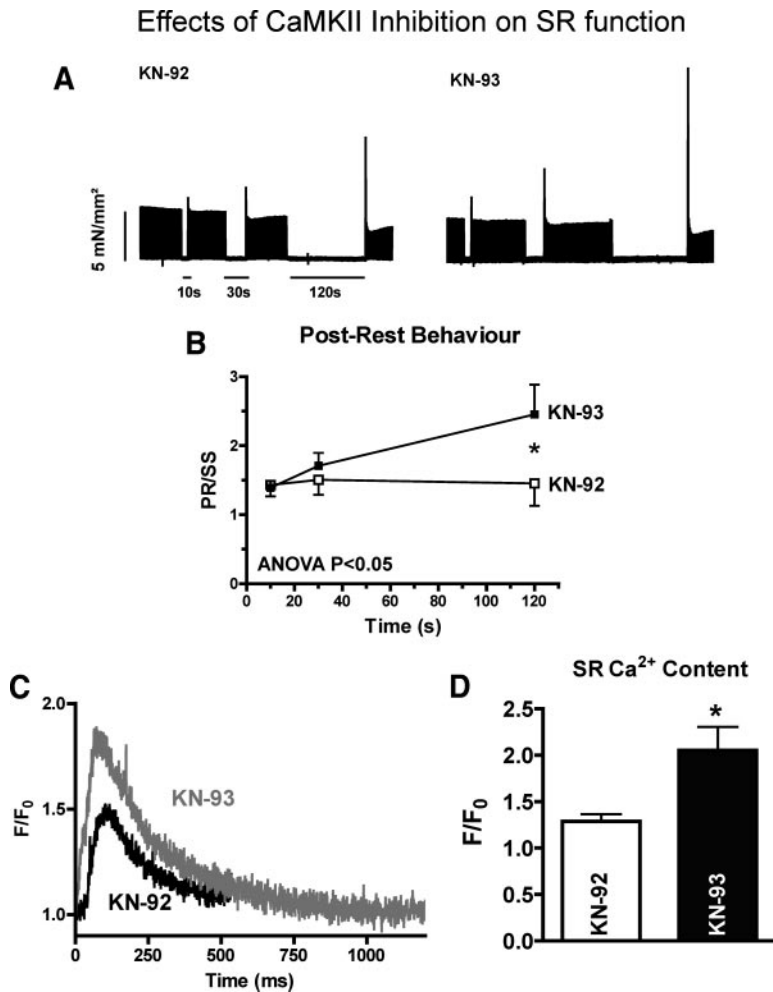
## Discussion

This study demonstrates for the first time that inhibition of elevated CaMKII levels in human end-stage failing but not in sheep NF myocardium significantly improves cardiac contractility. CaMKII $\delta_B$  and  $\delta_C$  protein levels were significantly increased in ICM and DCM in both LV as well as RV myocardium. CaMKII-inhibitor-dependent positive inotropic effects that occurred during FFR were elucidated by performing postrest experiments, caffeine measurements, and determination of SR  $\text{Ca}^{2+}$  leak. SR  $\text{Ca}^{2+}$  load was significantly improved most likely because of a reduced SR  $\text{Ca}^{2+}$  leak during CaMKII inhibition. The mechanism responsible for this may be the reduced RyR2 phosphorylation at Ser2809 and Ser2815.

## CaMKII in the Failing Heart

During excitation–contraction coupling, CaMKII phosphorylates several  $\text{Ca}^{2+}$ -handling proteins. Thus, CaMKII can substantially modulate  $\text{Ca}^{2+}$  influx and SR  $\text{Ca}^{2+}$  release and





**Figure 4. Inhibition of CaMKII modulates the postrest behavior of trabeculae from human failing hearts.** **A**, Original tracings of twitch force at increasing rest intervals. The magnitude of the first beat after rest is considered to reflect the relation between SR Ca<sup>2+</sup> uptake and loss during the rest interval. Inhibition of CaMKII clearly increased the amplitude of the first twitch after the rest interval. **B**, Mean values of postrest behavior which is plotted as the relation of the first twitch after rest normalized to the last before rest (PR/SS), indicating improved postrest behavior resulting from CaMKII inhibition using KN-93 (n=12/7 each;  $P < 0.05$ ). **C**, Original caffeine-induced SR Ca<sup>2+</sup> transients showing increased SR Ca<sup>2+</sup> content in the presence of KN-93. **D**, Mean values of significantly increased SR Ca<sup>2+</sup> content during treatment with KN-93 vs KN-92 (n=5 vs 9). \* $P < 0.05$  vs KN-92.

uptake. After PLB phosphorylation via CaMKII or PKA, SERCA activity and SR Ca<sup>2+</sup> uptake can be enhanced, leading to faster relaxation of the myocytes. Because of the increased CaMKII expression in human failing myocardium it has been proposed that elevated CaMKII in HF plays a compensatory role to keep myocardium from complete failure.<sup>9,22</sup>

However, in recent years evidence arose that increased levels of CaMKII may have actually adverse effects as it was shown that CaMKII overexpression in a transgenic mouse model leads to cardiac hypertrophy and severe DCM.<sup>10,11</sup> Moreover, a rabbit model of nonischemic HF indicated that CaMKII-dependent phosphorylation of the Ryr2 is involved in enhanced SR Ca<sup>2+</sup> leak and reduced SR Ca<sup>2+</sup> load and thus may contribute to arrhythmias and contractile dysfunction in the failing heart.<sup>13</sup> We have recently shown that in human atrial fibrillation where CaMKII levels are also elevated, CaMKII increases SR Ca<sup>2+</sup> leak, potentially contributing to arrhythmias.<sup>23</sup>

The results of the present study show that increased CaMKII in human HF is not limited to LV from patients with DCM as it was initially shown.<sup>9,22</sup> In fact, we found that CaMKII is also increased in ischemic origins and also in the RV of ICM as well as DCM. Thus, it appears that in the majority of end-stage HF etiologies CaMKII increases inde-

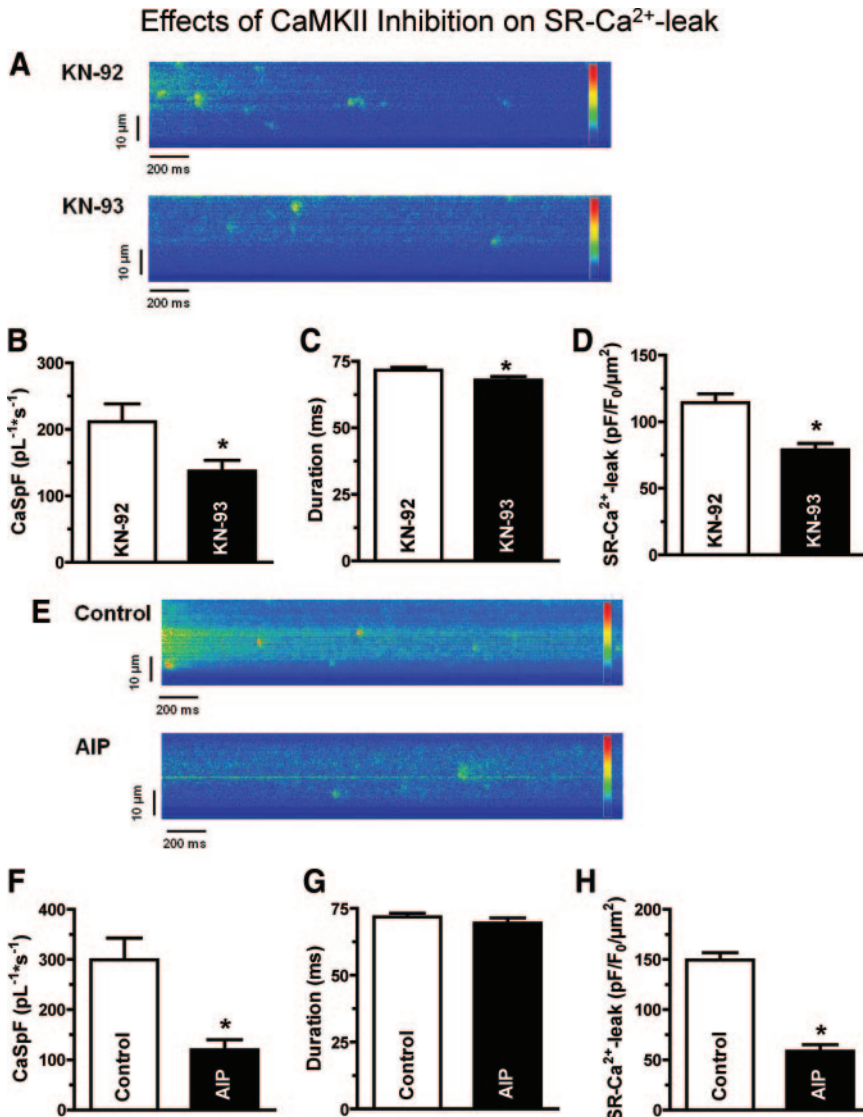
pendently of the genesis, which might be a general phenomenon and therefore important for further in vivo investigations.

### CaMKII Inhibition in Human Failing Myocardium

Here, we demonstrate that inhibition of CaMKII increases contractility in the human failing myocardium with a more pronounced effect at higher stimulation-frequencies. This effect was not observed in NF sheep trabeculae. Postrest potentiation together with caffeine experiments revealed that this observation can be explained by an increased SR Ca<sup>2+</sup> load in the presence of CaMKII inhibitors in human failing myocardium.

To understand the mechanism behind this finding we investigated SR Ca<sup>2+</sup> leak in freshly isolated myocytes. SR Ca<sup>2+</sup> leak together with reduced SERCA activity is considered to be a major contributor to contractile dysfunction in HF by losing Ca<sup>2+</sup> from the SR and consequently from the intracellular milieu probably via increased Na<sup>+</sup>/Ca<sup>2+</sup> exchanger.<sup>24</sup> As a measure for SR Ca<sup>2+</sup> leak we found that SR Ca<sup>2+</sup> spark frequency is highly sensitive to KN-93 although the reduced total SR Ca<sup>2+</sup> leak is more driven by the markedly diminished Ca<sup>2+</sup> spark frequency than by effects on spark duration as confirmed by experiments





**Figure 5. Spontaneous SR Ca<sup>2+</sup> release events (Ca<sup>2+</sup> sparks) in isolated human failing myocytes.** **A**, Original line scans show decreased SR Ca<sup>2+</sup> spark frequency in a myocyte treated with KN-93 compared with a myocyte in the presence of KN-92. **B**, SR Ca<sup>2+</sup> spark frequency was significantly decreased in the presence of KN-93 (n=28/7) vs KN-92 (n=31/7). **C**, Mean SR Ca<sup>2+</sup> spark duration (KN-93 n=63 vs KN-92 n=107). **D**, Calculated total SR Ca<sup>2+</sup> leak could be significantly reduced by inhibition of CaMKII. **E**, Line scans in the presence of AIP also decreased the SR Ca<sup>2+</sup> spark frequency. **F**, SR Ca<sup>2+</sup> spark frequency could be significantly decreased in the presence of AIP (n=16) vs control (n=23). **G**, Mean SR Ca<sup>2+</sup> spark duration (AIP, n=31; vs control, n=105). **H**, Calculated total SR Ca<sup>2+</sup> leak could be significantly reduced by inhibition of CaMKII. \*P<0.05 vs KN-92 or AIP.

using AIP. This finding is in agreement with previous reports showing transgenic overexpression of CaMKII being associated with reduced SR Ca<sup>2+</sup> load caused by increased SR Ca<sup>2+</sup> leak.<sup>10</sup> Most importantly, these effects could be reversed by KN-93 in our study. Obviously, SR Ca<sup>2+</sup> leak can be reduced independent of the species, cause, or amount of CaMKII expression because overexpression in the latter transgenic mouse model was more than 10-fold compared with control conditions and in the present study CaMKII expression was increased by only

30% to 40%. Also, Ai et al investigated effects of CaMKII on SR Ca<sup>2+</sup>-function in a rabbit model of nonischemic HF.<sup>13</sup> In this model, CaMKII was found to hyperphosphorylate the RyR2 leading to increased SR Ca<sup>2+</sup> leak and reduced SR Ca<sup>2+</sup> load. By inhibiting CaMKII using KN-93, these authors showed that SR Ca<sup>2+</sup>-content as well as Ca<sup>2+</sup> transients could be increased.<sup>13</sup>

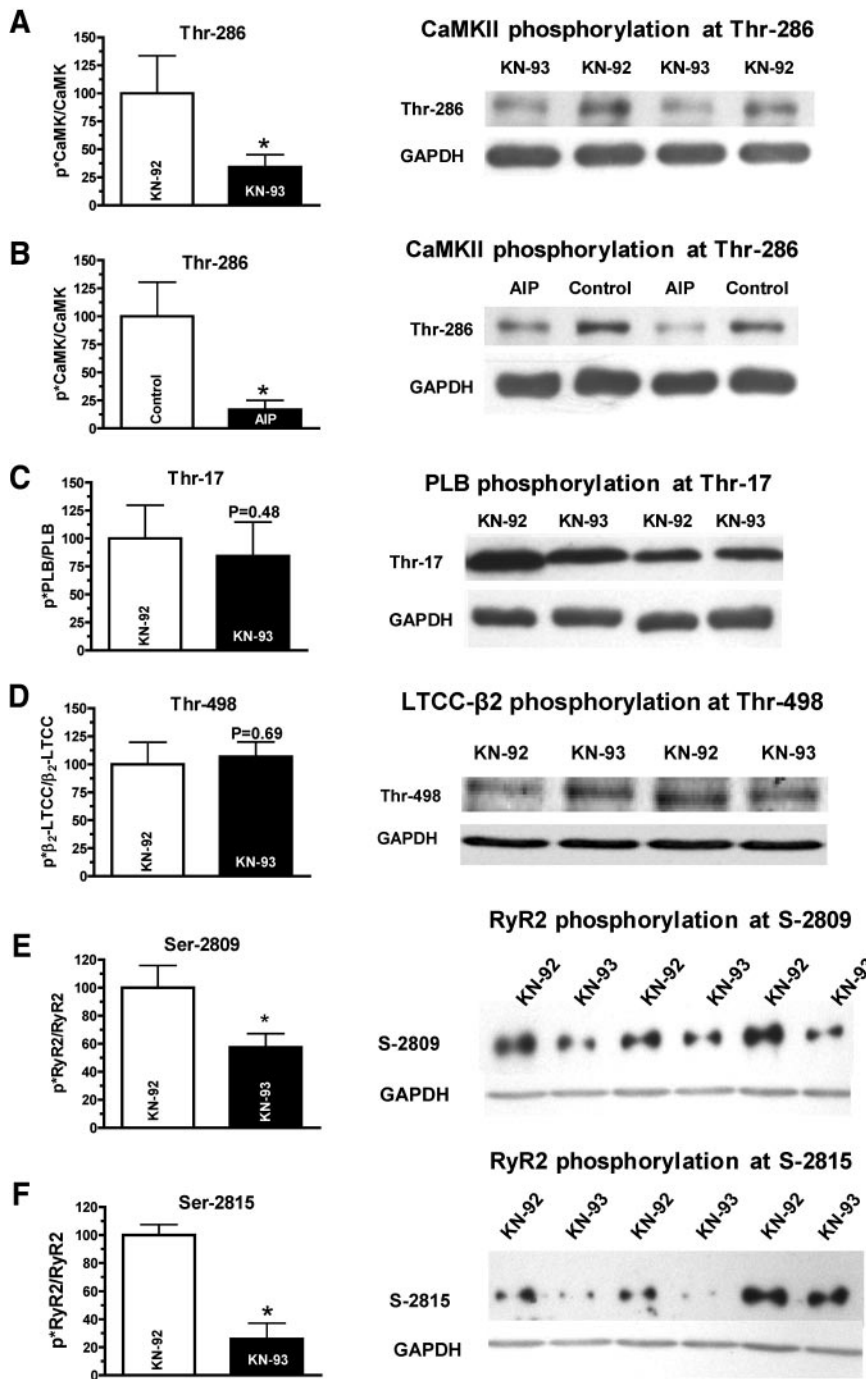
In the present study we attribute the reduced SR Ca<sup>2+</sup> leak in the presence of KN-93 to a reduced phosphorylation of the RyR2 at the CaMKII specific binding site

**Table 2. Detailed Mean Values of SR Ca<sup>2+</sup> Spark Parameters**

	Frequency (pL <sup>-1</sup> ·s <sup>-1</sup> )	TTP (ms)	Amplitude (F/F <sub>0</sub> )	Duration (ms)	Size (F/F <sub>0</sub> ·ms·μm)	SR Ca <sup>2+</sup> Leak (pF/F <sub>0</sub> ·μm <sup>-2</sup> )	RT50 (ms)	RT90 (ms)
KN-92	211.59±26.77	11.96±0.39	1.70±0.02	71.68±1.12	369.22±10.97	114.27±6.71	18.55±0.50	44.22±0.84
KN-93	137.26±16.31*	10.48±0.45*	1.65±0.03	67.96±1.35*	338.15±13.40	60.16±3.72*	17.02±0.66	42.59±0.99
Control	299.55±43.18	10.89±0.29	1.68±0.02	71.78±1.41	371.38±17.79	149.66±7.15	16.64±0.43	42.54±0.80
AIP	119.79±20.10*	10.86±0.50	1.65±0.05	69.52±1.85	376.89±19.64	58.81±6.23*	16.37±0.60	41.42±1.24

Cardiomyocytes were either treated with KN-92 vs KN-93 or AIP vs control. RT50 indicates time from peak to 50% of relaxation; RT90, time from peak to 90% of relaxation; TTP, time to peak. \*P<0.05 vs the corresponding control group (KN-92 or control).

### Phosphorylation status during CaMKII Inhibition



**Figure 6. Western blots of homogenated trabeculae that were treated with either KN-92 vs KN-93 or control vs AIP.** **A**, Mean values and original Western blot showing significant CaMKII inhibition at Thr286 in KN-93-treated homogenates ( $P < 0.05$ ,  $n = 7$  each). **B**, Mean values and original Western blot indicating a potent CaMKII inhibition at Thr286 in AIP-treated homogenates ( $P < 0.05$ ,  $n = 4$  each). **C**, Mean values of PLB (monomer) phosphorylation at Thr17 were unaffected by KN-93 ( $n = 8$  each). **D**, KN-93 did not lead to a dephosphorylation of the proposed CaMKII-dependent phosphorylation site of the  $\beta_{2a}$  subunit of LTCC ( $n = 4$  each). **E**, The RyR2 binding site for PKA and CaMKII showed a significant reduction of phosphorylation (normalized to RyR2) at Ser2809 ( $n = 5/3$  each) in the CaMKII inhibition group. **F**, Phosphorylation of the CaMKII-specific binding site ( $n = 3/2$  each). \* $P < 0.05$  vs KN-92 or control.

(Ser2815) and to a lesser extent, at Ser2809 which can also be phosphorylated by PKA. Wehrens et al performed site-directed mutagenesis and identified an exclusive CaMKII-specific binding site at Ser2815 on recombinant RyR2.<sup>18</sup> However, previous studies have suggested that Ser2809 may be the phosphorylation site of both PKA and CaMKII based on sequencing of tryptic phosphopeptides<sup>20,25</sup> or a phosphoepitope-specific antibody.

Interestingly, we found that inhibition of CaMKII lacks effects on relaxation kinetics in our experiments. Accordingly, Western blot analysis of PLB revealed unchanged

phosphorylation status at Thr17 after treatment with KN-93. Until recently, there was a general agreement that CaMKII phosphorylates PLB at Thr17 leading to improved frequency-dependent acceleration of relaxation.<sup>26</sup> Because of this, our finding with respect to unchanged relaxation and CaMKII-mediated PLB phosphorylation is in part surprising, although it has been previously observed that acute CaMKII overexpression neither changed relaxation of cell shortening nor the  $Ca^{2+}$  transient decay in rabbit myocytes.<sup>27</sup> One possible explanation for CaMKII inhibition leading to marked dephosphorylation of the RyR2,

without changes in LTCC or PLB phosphorylation and relaxation in human failing hearts, may be that compartmentalization of protein phosphatase (PP)1 and/or protein phosphatase inhibitor-1 (I-1) plays a crucial role in the phosphorylation/dephosphorylation balance of the cell. It has been proposed that differential anchoring of PP1 to various compartments can explain differences between RyR2 and PLB phosphorylation in HF.<sup>19</sup> Moreover, it was shown that SR-associated PP1 activity is increased 2.5-fold, suggesting that I-1 preferentially localizes to the SR.<sup>28</sup> El-Armouche et al found a good correlation between PLB and I-1 phosphorylation in human HF supporting the notification of a causal relationship and arguing for preferential affection of PLB (at the free SR) compared with the RyR2 located at the junctional SR.<sup>29</sup> Taken together, CaMKII-induced phosphorylation effects via PLB may be ameliorated, whereas phosphorylation of the RyR2 may be excessive in human heart failure. Thus, inhibition of CaMKII rather exerts effects on SR Ca<sup>2+</sup> release in HF similar to our finding of an improved SR Ca<sup>2+</sup> leak in human atrial fibrillating myocardium.<sup>23</sup> Even if there might be slight effects on relaxation which may not be detectable with our techniques the SR Ca<sup>2+</sup> leak would counteract small increases of faster Ca<sup>2+</sup> uptake. In any case, it seems that the major detrimental effect of CaMKII in HF and consequently the most important target emerging from our study is CaMKII-mediated SR Ca<sup>2+</sup> leak, which greatly outbalanced possible detrimental effects attributable to reduced SERCA-activity on CaMKII inhibition.

Recently, it was reported that knocking out the CaMKII-S2814 phosphorylation site on the RyR in a mouse model decreases the positive inotropic response to an increase of stimulation frequency which is just the opposite of what we have found.<sup>30</sup> This finding is in sharp contrast to our results but could be explained by different excitation–contraction coupling of species and possible allosteric effects on the CaMKII-S2814 knockout model.

Because CaMKII is known to phosphorylate LTCCs, we investigated one of the proposed CaMKII phosphorylation sites of the  $\beta_{2a}$  subunit at Thr498.<sup>17</sup> Whereas CaMKII phosphorylation was found to be markedly depressed in KN-93-treated trabeculae, we did not find any changes at the LTCC  $\beta_{2a}$  subunit. Although not intensively studied, this finding (if Thr498 is the corresponding phosphorylation site in human myocardium) could explain why the positive inotropic effect caused by a reduced SR Ca<sup>2+</sup> leak may not be counteracted by CaMKII-dependent LTCC modulation. Nevertheless, the LTCC  $\beta_{2a}$  subunit phosphorylation site of CaMKII has not been studied in human myocardium and thus requires further intensive research.

Another finding of our study is an unchanged diastolic tension during CaMKII inhibition, although diastolic tension increases with raising frequencies. This might be largely attributed to a strong correlation between fibrosis and diastolic dysfunction in the human heart,<sup>31</sup> which cannot be influenced by acute ionic modulation.

### Limitations of the Study

It must be stated that evaluation of CaMKII effects was acute and pharmacologically performed. Therefore, chronic effects

of CaMKII inhibition (eg, on target protein expression or transcription) cannot be ruled out.

KN-93 has been reported to exert unspecific effects (eg, on LTCC).<sup>32</sup> However, this may be disregarded from our results, because this effect of KN-93 on  $I_{Ca}$  is shared by its inactive analog KN-92<sup>32</sup> and we did not observe phosphorylation changes at the proposed binding site of CaMKII at the  $\beta_{2a}$  subunit of LTCC<sup>17</sup> between KN-93- and KN-92-treated trabeculae. Moreover, we recently found similar effects of KN-93 and KN-92 on  $I_{Ca}$  in human atrial myocytes.<sup>23</sup> In particular, we confirmed our findings by using AIP in trabeculae, as well as in isolated cardiomyocytes. AIP is known to be CaMKII-specific.<sup>32</sup> Additionally, effectiveness of CaMKII inhibition was confirmed by performing tissue phosphorylation analysis after treatment with KN-93, as well as AIP. It has to be stated that the phospho-CaMKII antibody may not distinguish between different CaMKII isoforms. Because CaMKII $\gamma$  was also found to be upregulated in human HF, we attribute our functional findings to inhibition of CaMKII without any specifications of the isoform. In the present work, CaMKII expression was investigated without evaluation of CaMKII phosphorylation, which has been previously done in human failing hearts.<sup>9</sup> This decision is based on the fact that reasonable phosphorylation analysis requires shock freezing of tissue within minutes. This may not be maintained after heart explantation especially for NF hearts, which also serve as valve donors and are dissected over some period of time.

Paired RV trabeculae were used in the present study, because LV endocardium consists of a large amount of fibrosis and thus may not be representative of the mean mass of wall myocardium, at least for the functional experiments. One further advantage in using RV trabeculae is that LV myocardium is largely spared from infarction and previous ischemia. To allow the assessment of CaMKII inhibition in RV preparations, CaMKII expression was investigated in the presented study, and no differences were found between CaMKII expression in the RV as compared with the LV. This may be caused by the fact that end-stage failing hearts often undergo severe pump failure of both ventricles.

During CaMKII inhibition, we found a reduced phosphorylation of Thr286 of  $\approx 70\%$  to  $80\%$ . Thus, our model represents no ablation of CaMKII because residual active CaMKII can still phosphorylate target proteins. Finally, we found a reduced SR Ca<sup>2+</sup> leak as the potential mechanism causing positive inotropic effects in the presence of CaMK inhibitors. However, another mechanism that may contribute to these effects, either by CaMKII-dependent mechanisms or by the inhibitors that were used, cannot be completely ruled out.

### Summary and Conclusion

In summary, the present study shows for the first time that CaMKII inhibition improves contractile function in human end-stage failing myocardium, where CaMKII $\delta$  expression is increased. CaMKII-dependent RyR2 phosphorylation leads to increased SR Ca<sup>2+</sup> leak, depleting the SR of Ca<sup>2+</sup>. CaMKII inhibition reduces this Ca<sup>2+</sup> leak, resulting in positive inotropic effects observed in our functional experi-



ments. Because CaMKII also plays a role in structural remodeling,<sup>33,34</sup> CaMKII inhibition should be further clinically investigated with respect to providing novel strategies and therapies in human HF.

### Acknowledgments

We gratefully acknowledge the expert assistance of M. Gelo and T. Sowa.

### Sources of Funding

L.S.M. is funded by the Deutsche Forschungsgemeinschaft (DFG) through the Clinical Research group KFO155 (MA 1982/2-2) and a Heisenberg grant (MA 1982/4-1), as well as by the Fondation Leducq Award to the Alliance for CaMK Signaling in Heart Disease.

### Disclosures

None.

### References

- Hasenfuss G, Reinecke H, Studer R, Meyer M, Pieske B, Holtz J, Holubarsch C, Posival H, Just H, Drexler H. Relation between myocardial function and expression of sarcoplasmic reticulum  $\text{Ca}^{2+}$ -ATPase in failing and nonfailing human myocardium. *Circ Res*. 1994;75:434–442.
- Schwinger RH, Boehm M, Schmidt U, Karczewski P, Bavendiek U, Flesch M, Krause EG, Erdmann E. Unchanged protein levels of SERCA II and phospholamban but reduced  $\text{Ca}^{2+}$  uptake and  $\text{Ca}^{2+}$ -ATPase activity of cardiac sarcoplasmic reticulum from dilated cardiomyopathy patients compared with patients with nonfailing hearts. *Circulation*. 1995;92:3220–3228.
- Hasenfuss G, Schillinger W, Lehnart SE, Preuss M, Pieske B, Maier LS, Prestle J, Minami K, Just H. Relationship between  $\text{Na}^{+}$ - $\text{Ca}^{2+}$ -exchanger protein levels and diastolic function of failing human myocardium. *Circulation*. 1999;99:641–648.
- Studer R, Reinecke H, Bilger J, Eschenhagen T, Boehm M, Hasenfuss G, Just H, Holtz J, Drexler H. Gene expression of the cardiac  $\text{Na}^{+}$ - $\text{Ca}^{2+}$  exchanger in end-stage human heart failure. *Circ Res*. 1994;75:443–453.
- Beuckelmann DJ, Naebauer M, Erdmann E. Intracellular calcium handling in isolated ventricular myocytes from patients with terminal heart failure. *Circulation*. 1992;85:1046–1055.
- Hasenfuss G, Pieske B. Calcium cycling in congestive heart failure. *J Mol Cell Cardiol*. 2002;34:951–969.
- Maier LS, Bers DM. Role of  $\text{Ca}^{2+}$ /calmodulin-dependent protein kinase (CaMK) in excitation-contraction coupling in the heart. *Cardiovasc Res*. 2007;73:631–640.
- Zhang T, Brown JH. Role of  $\text{Ca}^{2+}$ /calmodulin-dependent protein kinase II in cardiac hypertrophy and heart failure. *Cardiovasc Res*. 2004;63:476–486.
- Kirchhefer U, Schmitz W, Scholz H, Neumann J. Activity of cAMP-dependent protein kinase and  $\text{Ca}^{2+}$ /calmodulin-dependent protein kinase in failing and nonfailing human hearts. *Cardiovasc Res*. 1999;42:254–261.
- Maier LS, Zhang T, Chen L, DeSantiago J, Brown JH, Bers DM. Transgenic CaMKII $\delta_{\text{C}}$  overexpression uniquely alters cardiac myocyte  $\text{Ca}^{2+}$  handling: reduced SR  $\text{Ca}^{2+}$  load and activated SR  $\text{Ca}^{2+}$  release. *Circ Res*. 2003;92:904–911.
- Zhang T, Maier LS, Dalton ND, Miyamoto S, Ross J Jr, Bers DM, Brown JH. The  $\delta_{\text{C}}$  isoform of CaMKII is activated in cardiac hypertrophy and induces dilated cardiomyopathy and heart failure. *Circ Res*. 2003;92:912–919.
- Currie S, Loughrey CM, Craig MA, Smith GL. Calcium/calmodulin-dependent protein kinase II $\delta$  associates with the ryanodine receptor complex and regulates channel function in rabbit heart. *Biochem J*. 2004;377:357–366.
- Ai X, Curran JW, Shannon TR, Bers DM, Pogwizd SM.  $\text{Ca}^{2+}$ /calmodulin-dependent protein kinase modulates cardiac ryanodine receptor phosphorylation and sarcoplasmic reticulum  $\text{Ca}^{2+}$  leak in heart failure. *Circ Res*. 2005;97:1314–1322.
- Schillinger W, Teucher N, Sossalla S, Kettlewell S, Werner C, Raddatz D, Elgner A, Tenderich G, Pieske B, Ramadori G, Schoendube FA, Koegler H, Kockskaemper J, Maier LS, Schworer H, Smith GL, Hasenfuss G. Negative inotropy of the gastric proton pump inhibitor pantoprazole in myocardium from humans and rabbits - evaluation of mechanisms. *Circulation*. 2007;116:57–66.
- Sossalla S, Kallmeyer B, Wagner S, Mazur M, Maurer U, Toischer K, Schmitto JD, Seipelt R, Schoendube FA, Hasenfuss G, Belardinelli L, Maier LS. Altered  $\text{Na}^{+}$  currents in atrial fibrillation effects of ranolazine on arrhythmias and contractility in human atrial myocardium. *J Am Coll Cardiol*. 2010;55:2330–2342.
- Sossalla S, Wagner S, Rasenack EC, Ruff H, Weber SL, Schoendube FA, Tirilomis T, Tenderich G, Hasenfuss G, Belardinelli L, Maier LS. Ranolazine improves diastolic dysfunction in isolated myocardium from failing human hearts-role of late sodium current and intracellular ion accumulation. *J Mol Cell Cardiol*. 2008;45:32–43.
- Grueter CE, Abiria SA, Wu Y, Anderson ME, Colbran RJ. Differential regulated interactions of calcium/calmodulin-dependent protein kinase II with isoforms of voltage-gated calcium channel beta subunits. *Biochemistry*. 2008;47:1760–1767.
- Wehrens XH, Lehnart SE, Reiken SR, Marks AR.  $\text{Ca}^{2+}$ /calmodulin-dependent protein kinase II phosphorylation regulates the cardiac ryanodine receptor. *Circ Res*. 2004;94:e61–e70.
- Marx SO, Reiken S, Hisamatsu Y, Gaburjakova M, Gaburjakova J, Yang YM, Roseblit N, Marks AR. Phosphorylation-dependent regulation of ryanodine receptors: a novel role for leucine/isoleucine zippers. *J Cell Biol*. 2001;153:699–708.
- Witcher DR, Kovacs RJ, Schulman H, Cefali DC, Jones LR. Unique phosphorylation site on the cardiac ryanodine receptor regulates calcium channel activity. *J Biol Chem*. 1991;266:11144–11152.
- Rodriguez P, Bhogal MS, Colyer J. Stoichiometric phosphorylation of cardiac ryanodine receptor on serine 2809 by calmodulin-dependent kinase II and protein kinase A. *J Biol Chem*. 2003;278:38593–38600.
- Hoch B, Meyer R, Hetzer R, Krause EG, Karczewski P, Max Delbrück Center for Molecular Medicine B-BG. Identification and expression of delta-isoforms of the multifunctional  $\text{Ca}^{2+}$ /calmodulin-dependent protein kinase in failing and nonfailing human myocardium. *Circ Res*. 1999;84:713–721.
- Neef S, Dybkova N, Sossalla S, Ort K, Fluschnik N, Neumann K, Seipelt R, Schönndube F, Hasenfuss G, Maier LS. CaMKII-dependent diastolic SR  $\text{Ca}^{2+}$  leak and elevated diastolic  $\text{Ca}^{2+}$  levels in right atrial myocardium of patients with atrial fibrillation. *Circ Res*. 2010;106:1134–1144.
- Hasenfuss G, Schillinger W. Is modulation of sodium-calcium exchange a therapeutic option in heart failure? *Circ Res*. 2004;95:225–227.
- Witcher DR, Striffler BA, Jones LR. Cardiac-specific phosphorylation site for multifunctional  $\text{Ca}^{2+}$ /calmodulin-dependent protein kinase is conserved in the brain ryanodine receptor. *J Biol Chem*. 1992;267:4963–4967.
- Brittsan AG, Kranias EG. Phospholamban and cardiac contractile function. *J Mol Cell Cardiol*. 2000;32:2131–2139.
- Kohlhaas M, Zhang T, Seidler T, Zibrova D, Dybkova N, Steen A, Wagner S, Chen L, Brown JH, Bers DM, Maier LS. Increased sarcoplasmic reticulum calcium leak but unaltered contractility by acute CaMKII overexpression in isolated rabbit cardiac myocytes. *Circ Res*. 2006;98:235–244.
- Neumann J, Herzig S, Boknik P, Apel M, Kaspereit G, Schmitz W, Scholz H, Tepel M, Zimmermann N. On the cardiac contractile, biochemical and electrophysiological effects of cantharidin, a phosphatase inhibitor. *J Pharmacol Exp Ther*. 1995;274:530–539.
- El-Armouche A, Pamminger T, Ditz D, Zolk O, Eschenhagen T. Decreased protein and phosphorylation level of the protein phosphatase inhibitor-1 in failing human hearts. *Cardiovasc Res*. 2004;61:87–93.
- Kushnir A, Shan J, Betzenhauser MJ, Reiken S, Marks AR. Role of CaMKII $\delta$  phosphorylation of the cardiac ryanodine receptor in the force frequency relationship and heart failure. *Proc Natl Acad Sci USA*. 2010;107:10274–10279.
- Villari B, Sossalla S, Ciampi Q, Petruzzello B, Turina J, Schneider J, Turina M, Hess OM. Persistent diastolic dysfunction late after valve replacement in severe aortic regurgitation. *Circulation*. 2009;120:2386–2392.
- Gao L, Blair LA, Marshall J. CaMKII-independent effects of KN93 and its inactive analog KN92: reversible inhibition of L-type calcium channels. *Biochem Biophys Res Commun*. 2006;345:1606–1610.



33. Zhang R, Khoo MS, Wu Y, Yang Y, Grueter CE, Ni G, Price EE Jr, Thiel W, Guatimosim S, Song LS, Madu EC, Shah AN, Vishnivetskaya TA, Atkinson JB, Gurevich VV, Salama G, Lederer WJ, Colbran RJ, Anderson ME. Calmodulin kinase II inhibition protects against structural heart disease. *Nat Med*. 2005;11:409–417.
34. Backs J, Backs T, Neef S, Kreusser MM, Lehmann LH, Patrick DM, Grueter CE, Qi X, Richardson JA, Hill JA, Katus HA, Bassel-Duby R, Maier LS, Olson EN. The  $\delta$  isoform of CaM kinase II is required for pathological cardiac hypertrophy and remodeling after pressure overload. *Proc Natl Acad Sci U S A*. 2009;106:2342–2347.

## Novelty and Significance

### What Is Known?

- Heart failure is associated with increased  $\text{Ca}^{2+}$ /calmodulin-dependent protein kinase (CaMK)II expression and activity.
- CaMKII-dependent SR  $\text{Ca}^{2+}$  leak decreases sarcoplasmic reticulum (SR)  $\text{Ca}^{2+}$  content in animal models of heart failure.
- CaMKII inhibition decreases SR  $\text{Ca}^{2+}$  leak in animal models of heart failure.

### What New Information Does This Article Contribute?

- In isolated human failing myocardium, CaMKII leads to SR  $\text{Ca}^{2+}$  leak and decreases SR  $\text{Ca}^{2+}$  content.
- CaMKII inhibition reduces increased SR  $\text{Ca}^{2+}$  leak and restores SR  $\text{Ca}^{2+}$  content.
- CaMKII inhibition improves cardiac contractility and may therefore be a novel therapeutic strategy.

It has been shown that CaMKII expression and activity is upregulated in heart failure contributing to electric, structural,

and functional remodeling. Although CaMKII-dependent increased SR  $\text{Ca}^{2+}$  leak ( $\text{Ca}^{2+}$  sparks) has previously been reported in animal models of heart failure as a possible important pathophysiological mechanism and therapeutic target, its role in the human failing heart has not been investigated. In this study of failing human myocardium, we show that SR  $\text{Ca}^{2+}$  leak occurs and is attributable to CaMKII-dependent hyperphosphorylation of the SR  $\text{Ca}^{2+}$ -release channel (RyR2) and that it leads to elevation of spontaneous diastolic SR  $\text{Ca}^{2+}$ -release events from the SR. CaMKII inhibition can reduce both RyR2 phosphorylation and SR  $\text{Ca}^{2+}$  leak, leading to a normalization of SR  $\text{Ca}^{2+}$  content and, most importantly, to positive inotropic effects during increasing stimulation frequencies. Our results suggest that CaMKII inhibition could be beneficial with respect to heart failure, thus offering a novel therapeutic approach for this disease.

Circulation  
Research

JOURNAL OF THE AMERICAN HEART ASSOCIATION

FIRST PROOF ONLY

## **Online Supplement: Expanded Methods Section**

### **1.1 Human myocardial tissue**

Hearts from 31 males and 12 females were included with a mean age of  $47.8 \pm 2.2$  years. The mean ejection fraction was  $22.8 \pm 1.3\%$ , cardiac index was  $2.1 \pm 0.1$  L/min/m<sup>2</sup>, and pulmonary capillary wedge pressure was  $21.5 \pm 11.4$  mmHg. Premedication mostly consisted of angiotensin-converting enzyme inhibitors (55%) or angiotensin II type-1 blockers (27%),  $\beta$ -blockers (85%), cardiac glycosides (30%), and diuretics (91%).

After explantation, hearts were stored in a cooled cardioprotective solution (mmol/L): Na<sup>+</sup> 152, K<sup>+</sup> 3.6, Cl<sup>-</sup> 135, HCO<sub>3</sub><sup>-</sup> 25, Mg<sup>2+</sup> 0.6, H<sub>2</sub>PO<sub>4</sub><sup>-</sup> 1.3, SO<sub>4</sub><sup>2-</sup> 0.6, Ca<sup>2+</sup> 2.5, glucose 11.2, 2,3-butanedione monoxime (BDM) 10, oxygenated with 95% O<sub>2</sub> and 5% CO<sub>2</sub>.

All procedures involving humans were performed in compliance with the local ethical committee.

### **1.2 Large animal model**

Four sheep were sedated with Telazol (6 mg/kg) and endotracheally intubated. Anesthesia was maintained with 1-2% isoflurane. The hearts were explanted via a left thoracotomy which was performed through the 4th intercostal space.

Animals received humane care in compliance with the Guide for Care and Use of Laboratory Animals. The protocol was approved by the Institutional Animal Care and Use Committee at Harvard Medical School.

### **1.3 Trabeculae preparation and experiments**

Thin ventricular trabeculae (cross sectional dimensions:  $0.38 \pm 0.06$  for KN-93 vs.  $0.37 \pm 0.06$  mm<sup>2</sup> for KN-92,  $P=0.9$ ) were prepared using stereoscopic microscopy in a dissection chamber containing BDM-solution.<sup>1</sup> For isometric force recordings, trabeculae were mounted in an organ chamber and connected to the force transducer.<sup>2</sup> Trabeculae were superfused with Krebs-Henseleit solution (mmol/L: NaCl<sub>2</sub> 116, KCL 5, NaH<sub>2</sub>PO<sub>4</sub> 2, MgCl<sub>2</sub> 1.2, Na<sub>2</sub>SO<sub>4</sub> 1.2, NaHCO<sub>3</sub> 20, CaCl<sub>2</sub> initially 0.25, glucose 10) that was oxygenated with 95% O<sub>2</sub> and 5% CO<sub>2</sub> (37°C) and stimulated at a basal stimulation frequency of 1 Hz (voltage 25% above threshold). Ca<sup>2+</sup> (0.25 mmol/L) was added every 2 min until the final concentration of 2 mmol/L was reached. After an equilibration period of 30-60 min, the trabeculae were

gradually stretched until the maximum steady-state twitch force was achieved. When steady-state twitch force was achieved, stimulation was stopped and CaMKII-inhibition was performed by superfusing trabeculae for 20 min with KN-93 (2  $\mu\text{mol/L}$ , Calbiochem). Control experiments were performed using the inactive analogue KN-92 (2  $\mu\text{mol/L}$ , Calbiochem). Force-frequency relationships (FFR) were obtained at steady-state twitch force conditions using stimulation frequencies from 0.5 to 3Hz. Additional experiments were performed using the synthetic peptide CaMKII-inhibitor myristoylated AIP (autocamtide-2-related inhibitory peptide, 2.5  $\mu\text{mol/L}$ ). To measure SR  $\text{Ca}^{2+}$ -load, post-rest behaviour was assessed by using increasing rest intervals to 10, 30, and 120 s between beats at a basal stimulation frequency of 1 Hz.<sup>2</sup> Short periods of rest increase force of contraction of the first beat upon restimulation which is considered to be dependent on SR  $\text{Ca}^{2+}$ -uptake and release.

#### **1.4 Myocyte isolation**

LV myocardium was rinsed, cut into small pieces and incubated at 36°C in a spinner flask filled with Joklik MEM solution containing 1.0 mg/ml collagenase (Worthington type 2, 250 U/mg), and 13% trypsin (25% trypsin).<sup>2,3</sup> After 45 min, the supernatant was discarded and the remaining tissue was poured into the flask again. The remaining tissue was digested in a fresh JMEM solution containing only collagenase until myocytes were disaggregated using a Pasteur pipette. Solutions containing disaggregated cells were centrifuged (60 rpm, 3 min). In the following steps the same solution without trypsin was used and aliquots were incubated for 10-15 min. This procedure was repeated 4-5 times. Cells were stored for 1 h in KB medium containing (mmol/L): taurine 10, glutamic acid 70, KCl 25,  $\text{KH}_2\text{PO}_4$  10, dextrose 22, EGTA 0.5 (pH 7.4, KOH, room temperature). Only elongated cells with cross striations and without granulation were selected for experiments.

#### **1.5 Intracellular $\text{Ca}^{2+}$ -imaging**

##### **Measurement of $\text{Ca}^{2+}$ -sparks**

Isolated myocytes were placed on laminin-coated recording chambers and incubated for 20 min at room temperature with a 10  $\mu\text{mol/L}$  Fluo-3AM (Molecular Probes) loading buffer which also contained either CaMKII inhibitor KN-93 (1  $\mu\text{mol/L}$ ) or its inactive analogue KN-92 (1  $\mu\text{mol/L}$ ).<sup>3</sup> Similar experiments were performed using AIP (1  $\mu\text{mol/L}$ ). Experimental solution contained (mmol/L): 136 NaCl, 4 KCl, 0.33  $\text{NaH}_2\text{PO}_4$ , 4  $\text{NaHCO}_3$ , 2  $\text{CaCl}_2$ , 1.6  $\text{MgCl}_2$ , 10 HEPES, 10 glucose (pH 7.4, NaOH,

room temperature) as well as either KN-93 vs. KN-92 or AIP vs. control. Cells were continuously superfused during experiments. To wash out the loading buffer and remove any extracellular dye, as well as to allow enough time for complete de-esterification of Fluo-3AM, cells were superfused with experimental solution for 5 min before experiments were started.  $\text{Ca}^{2+}$  spark measurements were performed with a laser scanning confocal microscope (LSM 5 Pascal, Zeiss) using a 40x oil-immersion objective. Fluo-3 was excited by an argon ion laser (488 nm) and emitted fluorescence was collected through a 505 nm long-pass emission filter. Fluorescence images were recorded in the line-scan mode with 512 pixels per line (width of each scanline 38.4  $\mu\text{m}$ ) and a pixel time of 0.64  $\mu\text{s}$ .  $\text{Ca}^{2+}$ -spark frequency (CaSpF) was measured at resting conditions and normalized to cell volume and scan rate ( $\text{pL}^{-1}\cdot\text{s}^{-1}$ ). Spark amplitude was estimated by dividing peak fluorescence by baseline fluorescence ( $F/F_0$ ) after subtraction of the background fluorescence. Spark frequency (CaSpF) was measured after loading the SR with  $\text{Ca}^{2+}$  by repetitive field stimulation (10 pulses at 1 Hz) and normalized to cell volume and scan rate ( $\text{pL}^{-1}\cdot\text{s}^{-1}$ ). Spark size (CaSpS) was calculated as product of amplitude ( $F/F_0$ ), duration and width. From this, we inferred the average leak per cell by multiplication of CaSpS with the mean spark frequency of the respective cell.

### **Determination of SR $\text{Ca}^{2+}$ -content**

The chambers containing dye loaded myocytes were mounted on the stage of an inverted microscope (Nikon Eclipse TE2000-U) and superfused. Fluo-3 was excited at  $480\pm 15$  nm and fluorescence was measured at  $535\pm 20$  nm. After a washout period in order to eliminate the external dye, myocytes were field-stimulated at 1 Hz. SR  $\text{Ca}^{2+}$ -content was assessed by caffeine-induced  $\text{Ca}^{2+}$ -transients. During steady-state conditions at 1 Hz, stimulation was stopped for 1 s and caffeine solution (10 mmol/L) was applied directly to one myocyte leading to immediate and complete SR  $\text{Ca}^{2+}$ -release.  $\text{Ca}^{2+}$ -transient amplitudes ( $F/F_0$ ) were calculated by dividing fluorescence  $F$  by the baseline fluorescence  $F_0$  after subtraction of the background fluorescence (IonWizard, IonOptix Corp). The amplitudes of the caffeine-induced  $\text{Ca}^{2+}$ -transients were used as a measure for SR  $\text{Ca}^{2+}$ -content.<sup>4</sup>

### **1.6 Specification of antibodies**

Ventricular myocardium was homogenized in buffer containing (mmol/L): 20 Tris-HCl, pH 7.4, 200 NaCl, 20 NaF, 1  $\text{Na}_3\text{VO}_4$ , 1 DTT, 1% Triton X-100 and complete



protease inhibitor cocktail (Roche Diagnostics). Protein concentration was determined by BCA assay (Pierce Biotechnology). Denatured tissue (30 min, 37°C for PLB and 5 min, 95°C for CaMKII, RyR2 and LTCC  $\beta_{2a}$  subunit in 2%  $\beta$ -mercaptoethanol) were subjected to Western blotting (4-15% gradient and 10% SDS-polyacrylamide gels) using anti-CaMKII $\delta$  (1:15000, a gift from D.M. Bers), anti-CaMKII $\gamma$  (1:2000, Santa Cruz), anti-phospho-CaMKII Thr-286 (1:1500, Affinity Bio Reagents), anti-PLB (1:5000, Millipore), anti-phospho-PLB Thr-17 (1:5000, Badrilla), anti-LTCC CP  $\beta_{2a}$  subunit (1:200, Santa Cruz) anti-RyR2 and anti-phospho-RyR2 2809 (1:1000), anti-phospho-RyR2 2815 (1:1000, gifts from A.R. Marks), and anti-GAPDH (1:20000, Biotrend Chemikalien GmbH) antibodies. Chemiluminescent detection was done with Immobilon<sup>TM</sup> Western (Millipore). Phosphorylation values were normalized to protein expression.

## References

1. Schillinger W, Teucher N, Sossalla S, Kettlewell S, Werner C, Raddatz D, Elgner A, Tenderich G, Pieske B, Ramadori G, Schoendube FA, Koenigler H, Kockskaemper J, Maier LS, Schwoerer H, Smith GL, Hasenfuss G. Negative inotropy of the gastric proton pump inhibitor pantoprazole in myocardium from humans and rabbits - Evaluation of mechanisms. *Circulation*. 2007;116:57-66.
2. Sossalla S, Kallmeyer B, Wagner S, Mazur M, Maurer U, Toischer K, Schmitto JD, Seipelt R, Schoendube FA, Hasenfuss G, Belardinelli L, Maier LS. Altered Na<sup>+</sup> currents in atrial fibrillation effects of ranolazine on arrhythmias and contractility in human atrial myocardium. *J Am Coll Cardiol*. 2010;55:2330-2342.
3. Neef S, Dybkova N, Sossalla S, Ort K, Fluschnik N, Neumann K, Seipelt R, Schoendube F, Hasenfuss G, Maier LS. CaMKII-Dependent Diastolic SR Ca<sup>2+</sup> Leak and Elevated Diastolic Ca<sup>2+</sup> Levels in Right Atrial Myocardium of Patients With Atrial Fibrillation. *Circ Res*. 2010;106:1134-1144.
4. Sossalla S, Wagner S, Rasenack EC, Ruff H, Weber SL, Schoendube FA, Tirilomis T, Tenderich G, Hasenfuss G, Belardinelli L, Maier LS. Ranolazine improves diastolic dysfunction in isolated myocardium from failing human hearts-role of late sodium current and intracellular ion accumulation. *J Mol Cell Cardiol*. 2008;45:32-43.