

RESEARCH ARTICLE

The Role of CHI3L1 (Chitinase-3-Like-1) in the Pathogenesis of Infections in Burns in a Mouse Model

Stefan Bohr^{1,4*}, Suraj J. Patel¹, Radovan Vasko^{2,5}, Keyue Shen¹, Alexander Golberg^{1,6}, Francois Berthiaume³, Martin L. Yarmush^{1,3}

1 Center for Engineering in Medicine, Shriners Hospitals for Children and Department of Surgery, Massachusetts General Hospital, Harvard Medical School, Boston, MA, United States of America, **2** Department of Medicine, New York Medical College, Valhalla, NY, United States of America, **3** Department of Biomedical Engineering, Rutgers University, New Brunswick, NJ, United States of America, **4** Department Plastic and Hand Surgery—Burn Center, UKA University Clinics RWTH, Aachen, Germany, **5** Department of Nephrology & Rheumatology, UMG University Clinics, Goettingen, Germany, **6** Porter School of Environmental Studies, Tel Aviv University, Tel Aviv, Israel

* sbohr@ukaachen.de



OPEN ACCESS

Citation: Bohr S, Patel SJ, Vasko R, Shen K, Golberg A, Berthiaume F, et al. (2015) The Role of CHI3L1 (Chitinase-3-Like-1) in the Pathogenesis of Infections in Burns in a Mouse Model. PLoS ONE 10(11): e0140440. doi:10.1371/journal.pone.0140440

Editor: Dominik Hartl, University of Tübingen, GERMANY

Received: June 14, 2015

Accepted: September 25, 2015

Published: November 3, 2015

Copyright: © 2015 Bohr et al. This is an open access article distributed under the terms of the [Creative Commons Attribution License](https://creativecommons.org/licenses/by/4.0/), which permits unrestricted use, distribution, and reproduction in any medium, provided the original author and source are credited.

Data Availability Statement: All relevant data are within the paper and its Supporting Information files.

Funding: This work was funded by the Shriners Hospitals for Children, <https://www.shrinershospitalsforchildren.org/locations/boston>. SB is a receipt of a Deutsche Forschungs Gemeinschaft (DFG, Germany) postdoctoral fellowship award (GZ: BO3468/2-1), <http://www.dfg.de/en/>.

Competing Interests: The authors have declared that no competing interests exist.

Abstract

In severe burn injury the unique setting of a depleted, dysfunctional immune system along with a loss of barrier function commonly results in opportunistic infections that eventually prove fatal. Unfortunately, the dynamic sequence of bacterial contamination, colonization and eventually septic invasion with bacteria such as *Pseudomonas* species is still poorly understood although a limiting factor in clinical decision making. Increasing evidence supports the notion that inhibition of bacterial translocation into the wound site may be an effective alternative to prevent infection. In this context we investigated the role of the mammalian Chitinase-3-Like-1 (CHI3L1) non-enzymatic protein predominately expressed on epithelial as well as innate immune cells as a potential bacterial-translocation-mediating factor. We show a strong trend that a modulation of chitinase expression is likely to be effective in reducing mortality rates in a mouse model of burn injury with superinfection with the opportunistic PA14 *Pseudomonas* strain, thus demonstrating possible clinical leverage.

Introduction

Opportunistic bacterial infections such as with *Pseudomonas* (PS), *Serratia*, or *Acinetobacter* species are a common cause of lethality associated with burn injury [1]. The survival of burn patients often not only depends upon the severity, scored by e.g. (i) burn depth, (ii) surface area, (iii) location of the burn but also upon the dynamics of seemingly unavoidable contamination, colonization but preventable opportunistic bacterial invasion [2]. The term ‘opportunistic’ can be misleading but usually refers to microbes which (i) although ubiquitous with the environment rarely cause infections with immunity intact, (ii) wield a natural drug-resistance,

(iii) form biofilms [3] and (iv) secrete exotoxins along with invasiveness through not well understood mechanism of *quorum sensing* [4]. PS fulfills all of these criteria [5].

Patients with relevant burn injury typically demonstrate the appearance of positive opportunistic swabs as early as 24 hours post burn. Strong evidence can be found in the literature that the most likely source of contamination e.g. with PS is the individual's own enteric or pulmonary system [6–8].

A large body of literature is available related to (i) impaired innate immunity function [9–13], (ii), enteric/epithelial interactions with microbes [14, 15], (iii) environmental sensing of microbes [4] or (iv) development of multi-drug-resistance [16] in relation to an overwhelming systemic inflammatory response seen with septicemia or burn injury.

In this context, Chitinase-3-like-1 (CHI3L1, YKL-40 or HC-gp39), has been evaluated as an inflammation-associated inducible molecule which enhances bacterial adhesion and invasion on/into epithelial cells and macrophages [17–24]. CHI3L1 binds to chitin (an N-acetyl glucosamine polysaccharide) with high affinity, but has no apparent enzymatic activity, again suggesting other relevant biological functions apart from enteric enzymatic degradation. Chitin [25] is abundantly found in nature (e.g., fungi, insects, nematodes) but is completely absent in mammals. Nevertheless, mammalian chitinases are naturally found in the skin, intestine, joints, and the lungs of mice and humans [26, 27]. Although bacteria do not express chitin, some bacterial strains such as PS constitutively express chitin-binding proteins (CBPs) [28–31]. It has been suggested that CHI3L1 on epithelial cells enhances adhesion and invasion of CBP-expressing bacteria with potentially high virulence [14, 18, 19, 22]. Specifically, CBP21 expressed by *Serratia marcescens* has been shown to specifically bind CHI3L1 expressed on colon epithelial cells in mice [20]. PS actively produces chitin-binding protein (cbpD) and should possess the ability to directly interact with CHI3L1 as well as other mammalian chitinases via its chitin-binding domain (or motif). This study was designed to investigate this novel aspect in the pathogenesis of infection in burns, and the effect of modulating CHI3L1 expression in the context of severe burn injury in a mouse model.

Methods

Experimental mice & animal models

C57BL/6 wild type (WT) mice, >6 weeks old, 20–25 grams of body weight, were obtained from The Jackson Laboratory (Bar Harbor, ME). Animals were housed under standard conditions in an institutional animal facility in accordance with *National Research Council* guidelines and with approval by the *Subcommittee on Research Animal Care* at Massachusetts General Hospital, Boston, MA. Animals were anesthetized by intraperitoneal injection of ketamine/xylazine. For tissue harvest, animals were euthanized by intraperitoneal sodium pentobarbital overdose or carbon dioxide inhalation.

The following models of burn injury as well as an associated opportunistic infection with *Pseudomonas* species leading to a septicemia-induced systemic inflammatory response (SIR) were used: (1) a full-thickness dorsal scald burn of ~20% body-surface-area (BSA) including a volume resuscitation and pain management protocol as previously described [32]; (2) SIR-induction using i.p. injection of lipopolysaccharides (LPS) from *Pseudomonas aeruginosa* 10 (Sigma-Aldrich, MO; #L9143-25MG); (3) opportunistic infection of surgically debrided burn wounds (see model 1) with topical application of the wild type PA14 *Pseudomonas* strain (see also S2 Fig); (4) burn injury-induced entero-hematogenic bacterial translocation (see also S3 Fig) following 48h pre-burn enteric PA14 colonization using gavage-inoculation technique as previously described [33]. Induction of mammalian chitinases prior to burn injury was performed either by s.c. injection of chitosan (Sigma-Aldrich, MO; #448869) preparations or

supplementation of the later to drinking water. For in vivo blockage experiments we used sheep anti-mCHI3L1 <http://www.rndsystems.com/Products/BAF2649>).

Survival assessment was conducted under close surveillance in intervals of ≤ 6 h of animal behavior as well as under pain management [buprenorphine: 0.1 mg/kg/50 μ l saline sc initially and every 12h] as previously described [32]. An animal was a non-survivor if found in a 'moribund condition' based on a score sheet system (e.g. loss of grooming, feeding, general activity, hunched position, shivering, dry eyes, apathy) as previously described [34], or already dead (although this was a rare occurrence). Moribund animals were euthanized using pentobarbital overdose (100 mg/kg ip).

Pseudomonas wild type strain (PA14)

PA14 Pseudomonas strain stock (UCBPPPA14; provided by Department of Microbiology and Molecular Genetics, Harvard Medical School, Boston, MA 02115, USA [35]) was maintained using selective cetrimide agar (Sigma-Aldrich, MO; #70887) and expanded in LB broth (Lennox) media (Sigma-Aldrich, MO; #L3022) at 37°C supplemented with chitin (Sigma-Aldrich, MO; # C7170) or chitosan (see above). For animal experiments, expanded bacterial cultures were washed 5x with and stored in 0.9% saline at 4°C for <2 weeks. Bacterial dosage/load was determined performing agar-plate based dilution-series.

CFU-counts

For the estimation of colony-forming-units of PA14 Pseudomonas strain, dilution series (1:1 to 1:10⁴) of given samples, e.g. LB media or blood culture, were plated on cetrimide agar plates and incubated at 37°C for 24h as previously described [18].

Peritoneal lavage

For the evaluation of PA14 Pseudomonas strain enteric translocation, peritoneal lavage was performed using 1ml of 0.9% saline for i.p. injection followed by a white cell count in peritoneal aspirates as previously described [36].

Immunohistochemistry (IHC)

Histological evaluation of tissues was performed on 10 μ m sections of formalin fixed and paraffin embedded samples followed by IHC using standard protocols (www.ihcworld.com). IHC for mCHI3L1 was performed using the following antibodies and detection reagents: sheep anti-mCHI3L1 (R&D Systems, Inc., MN; #BAF2649), normal sheep IgG biotinylated control (R&D Systems, Inc., MN; #BAF020), Vectastain ABC Kit/DAB Peroxidase Substrate Kit (Vectorlabs, CA; #PK-4000, # SK-4100) and hematoxylin nuclear counterstain (Sigma-Aldrich, MO; #HHS16). Images were taken using a Nikon Eclipse E600[™] microscope (Nikon, Japan) mounted with a Spot PCI-CE[™] camera (Carl-Zeiss, Germany).

Gene expression analysis

RNA was extracted from cells or tissue samples using either *TRIzol[®] Reagent* extraction (Invitrogen, CA; # AM9738) or *AllPrep DNA/RNA/Protein Mini Kit[®]* (www.qiagen.com). Total RNA quality was assessed by spectroscopy (NanoDropND-1000, Thermofisher, MA) and microfluidic gel analysis (Agilent RNA 6000 Nano Chip /Agilent[®] 2100 Bioanalyzer; Germany) followed by cDNA conversion using the *SuperScript[™] III Platinum[®] Two-Step qRT-PCR Kit* (Invitrogen, CA; #11734-068) or a *RT² First Stand Kit[®] C-03* (Sabiosciences, Germany; #330401) and a *Perkin Etus Thermal Cycler 480* (PerkinElmer, CA). The gene expression patterns were assessed by

quantitative PCR (qPCR) with a *RT² SYBR[®] Green/Rox qPCR Master Mix* (Sabiosciences, Germany; #330523) using a *Stratagene™ mx3005P* system (Agilent, Germany). A melting curve was used to confirm the specificity of each primer pair. Each sample was run in triplicate to exclude outliers. Gene expression was analyzed using the $\Delta\Delta\text{CT}$ -method (*RT²qPCR Primer Assay User Manual, Version 2.17*, www.sabiosciences.com) with GAPDH as the normalizing gene. The average gene expression was computed for each experimental condition ($n \geq 3$) relative to the control condition ($n \geq 3$). GAPDH primer was purchased (Sabiosciences/Quiagen, Germany; # PPM02946E-200). The following primers were designed using *Primer3 v. 0.4.0* software ([//frodo.wi.mit.edu/primer3](http://frodo.wi.mit.edu/primer3)) utilizing the following DNA coding sequences (www.ncbi.nlm.nih.gov/nucore): mCHI3L1 (as quoted: [18]), F: 5'-GTACAAGCTGGTCTGCTACT, R: 5'-GTTGGAGGCAATCTCGAAA; mCHIT1 (Gene ID: 71884), F: 5'-AGGTGCCT-TACGCCTTCC, R: 5'-GCCGTAGTGTCCGGATGA; mCHIA (Gene ID: 81600), F: 5'-CCTGCTGGGCCCTATACC, R: 5'-CCCAGATCATGGCACCTC; PA14-CbpD (Gene ID: WP003140848), F: 5'-GCACTCCTGCCACTCACC, R: 5'-CGAGGAAGCAGCCGTAGA; PA14-toxA (Gene ID: WP003138083), F: 5'-CGAGGAAGCCTTCGACCT, R: 5'-GTTGTTCGATGGCCAGCTT; PA14-AlgF (Gene ID: WP003140553), F: 5'-CGGTGACGTA CAGGCAGA, R: 5'-CAACCCGGTGAAGGTGAA; PA14-Hagl (Gene ID: WP011666523), F: 5'-GACGGCCTGAGTCTGGA, R: 5'-AGGCTGCCTTCGCTGAC; PA14-RhIR (syn. PA14-UCBPP) (Gene ID: WP003119559), F: 5'-CGGTTTTCGTAGCGAGAT, R: 5'-CCAGGCCTTGGGATAGGT;

Statistics

The results are presented as mean \pm SD and/or SEM. Pair wise comparisons were performed using a 2-tailed student's t test, whereas multiple comparisons were performed by 2-way analysis of variance (ANOVA). The Kaplan–Meier method was used to estimate survival rates of animal groups. Equivalences of the survival curves were tested by log-rank statistics. All analyses were performed using Prism[®] 4.0 (GraphPad Software Inc., CA) software. A 2-tailed $P < 0.05$ was considered statistically significant.

Results

Evaluation of chitinase expression in wild type (WT) mice

First, we evaluated the organ-specific expression of the three main chitinases found in mammals including humans and WT mice using RT-qPCR: CHI3L1, CHIA and CHIT. Here we distinguished between intra- and inter-organ analysis referring to comparative expression between different chitinases within one organ as well as organ-specific expression levels for each chitinase. The main finding was that CHI3L1 appears to be the predominantly expressed chitinase in mice with ~100–1000 fold higher expression levels compared to CHIA and CHIT in an intra-organ comparison. CHIT1 appeared to be predominantly expressed in colon and skin tissue whereas CHIA expression was low in all investigated organs compared to CHI3L1 and CHIA (Fig 1A). Also, with inter-organ analysis, CHI3L1 showed highest constitutive expression levels in lung tissue and lowest in colon conditions. CHIT showed highest expression in lung, skin or colon and lowest in spleen and liver. Again, CHIA showed highest expression levels in lung and lowest in Liver (Fig 1B).

Modulation of chitinase expression under SIR-conditions in WT mice

We continued to compare organ-specific expression levels under pro-inflammatory conditions including burn injury, LPS-induced SIR with/without burn injury or in a burn model of enteric

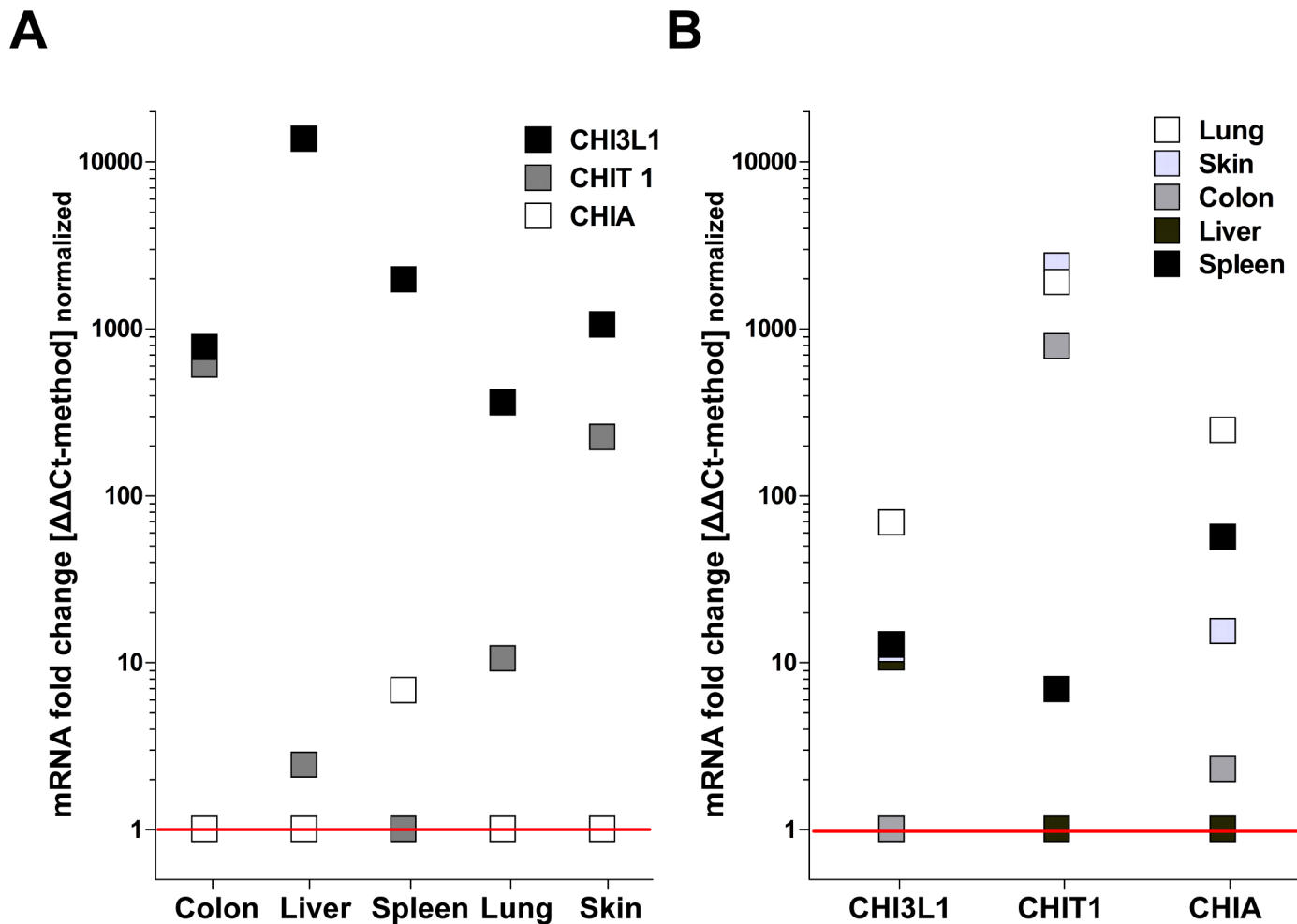


Fig 1. CHI3L1, CHIA and CHIT show distinct, organ-specific expression levels in wild type (WT) mice. (A) Intra-organ comparison regarding skin, spleen, lungs, liver or colon demonstrates pre-dominance of CHI3L1 expression levels over CHIA and CHIT. (B) Inter-organ comparison of CHI3L1, CHIA or CHIT each also reveals an apparent biological relevance e.g. of CHI3L1-expression in lung tissue (qPCR / $\Delta\Delta\text{Ct}$ -method: $n \geq 4$; normalized to lowest expression value of each data set = fold change).

doi:10.1371/journal.pone.0140440.g001

colonization (48h pre-burn) with PA14 Pseudomonas strain. Most notably, CHI3L1 was strongly induced (~100 fold compared to controls) in lung under all pro-inflammatory conditions. Interestingly, colon tissue only responded with an upregulation of CHI3L1 expression following enteric colonization with PA14, further induced with additional burn injury but stayed largely unaffected with burn injury or LPS stimulus. In general, expression of CHI3L1 in liver, skin and spleen was only increased ~5–10 fold, irrespective of the type of pro-inflammatory stimulus (Fig 2A). Conversely, burn injury and LPS, but not PA14 enteric colonization, induced CHIA (~10–100 fold) predominately in colon and liver, but not in lung, skin or spleen. Correspondingly, CHIT 1 was upregulated in liver and spleen, but not lung, skin or colon (Fig 2B/2C).

Anti-CHI3L1 immunohistology (IHC)

Based on our transcriptional data, we confirmed CHI3L1 expression using IHC with a focus on representative slides on lung, colon and skin. We identified epithelium as the pre-dominant source of CHI3L1 expression. Though constitutively expressed my bronchial ciliary and

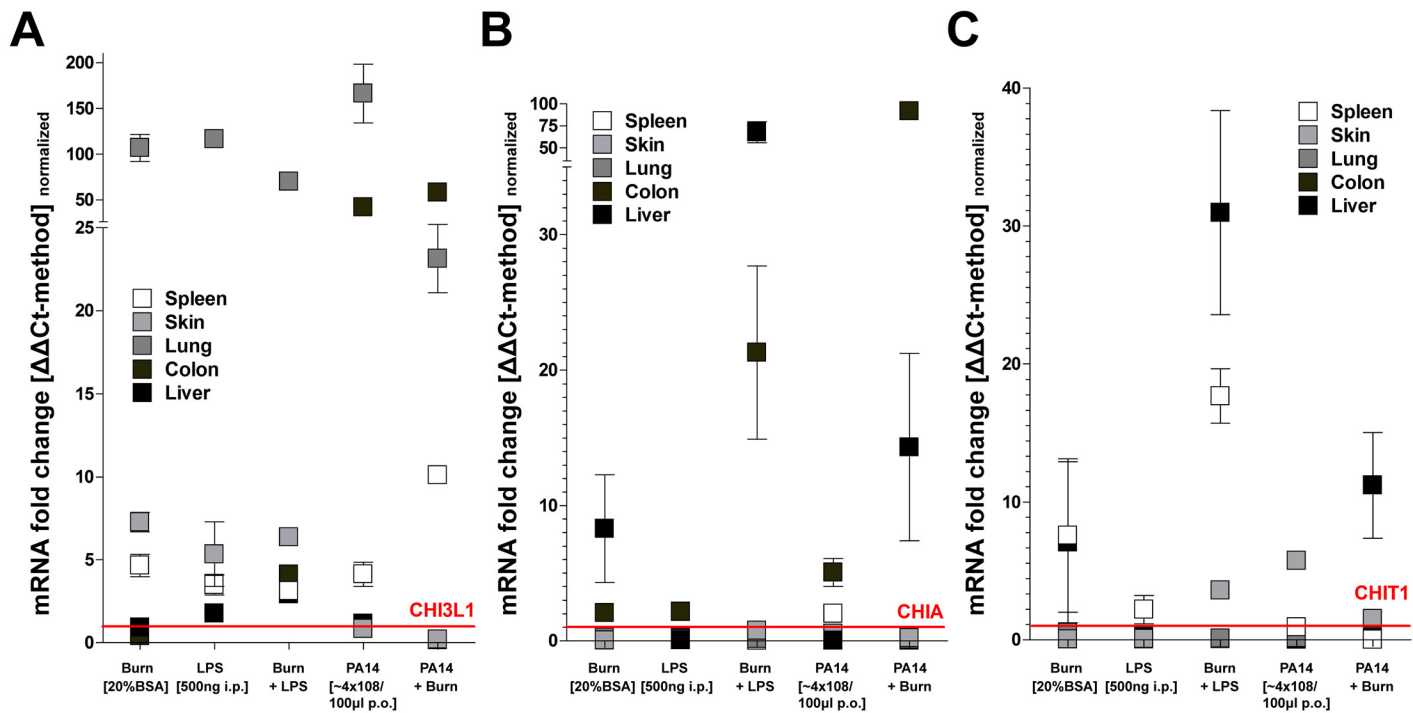


Fig 2. A systemic inflammatory response (SIR) strongly modulates CHI3L1, CHIA and CHIT expression in a mouse model of burn injury and sepsis. WT mice were exposed to burn injury (20% Body Surface Area), lipopolysaccharide (LPS) or oral gavage with Pseudomonas strain (PA14) 48 hours prior to tissue analysis. (A) CHI3L1 expression was strongly induced in lung tissue under all conditions of SIR but also in colon following exposure to PA14 strain. (B) CHIA was predominately induced in liver but also colon following exposure to PA14 strain. (C) CHIT1 appeared to be induced in spleen and liver by burn injury, with or without LPS and PA14 exposure (all: qPCR /ΔΔCt-method: n≥4; mean±SD; normalized to respective organ control).

doi:10.1371/journal.pone.0140440.g002

alveolar epithelium, CHI3L1-induction in lung appears to be an important feature of SIR following severe burn injury or LPS stimulus (Fig 3A). Notably, with severe lung edema we also saw induction within endothelial vascular lining. As expected, leukocytes homing on lung tissue also stained largely positive for CHI3L1. (Fig 3A3). Conversely, colon appeared to somewhat resistant to pro-inflammatory stimuli (Fig 3B). However, colon epithelial cells appeared to constitutively express CHI3L1 along an apical gradient which progressed to colonic crypts following severe burn injury (Fig 3B1). In addition, an undefined population of large nuclear stromal cells also stained strongly positive for CHI3L1 (Fig 3B1). With the loss of epithelium following full thickness burns, the observed transcriptional upregulation of CHI3L1 in skin was likely due to blood borne innate immune cells homing into the burn wound (Fig 3C2). However, in unaffected skin there appeared to be a small population of resident stromal cells which also stained CHI3L1+ (Fig 3C1).

In conclusion, our findings so far indicated a significant modulation of chitinase expression, especially of CHI3L1, in the context of SIR.

Modulation of chitinase tissue expression using chitosan, a poly-D-glucosamine derivative

In order to assess the feasibility of a therapeutic modulation of chitinase expression in burn patients, we exposed WT mice to either s.c. injections or p.o. drinking water containing low molecular weight (lmw) chitosan, a derivative of xenogenic chitin with increased solvability over a prolonged period of time. Both, chitin and chitosan have been comprehensively

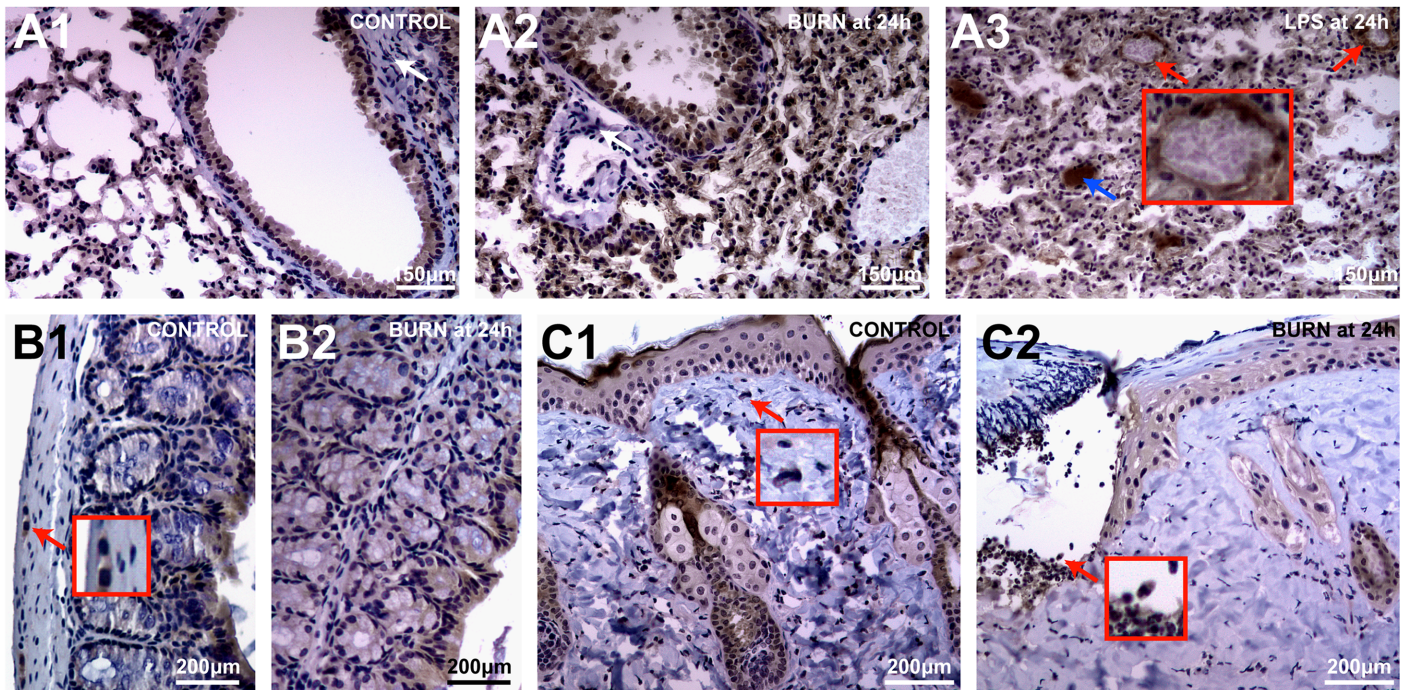


Fig 3. CHI3L1-expression in tissues is dominated by the epithelial lineage as well as a small subset of stromal cells. Immunohistochemistry using anti-CHI3L1 was performed in WT mice. (A1) Both bronchial and alveolar epithelium stain CHI3L1+ in normal lung tissue. (A2) With burn-induced lung injury peri-vascular and bronchial stromal tissue remains CHI3L1- (white arrow). However, with (A3) severe, LPS-induced SIR, lung tissue demonstrates CHI3L1 + vascular endothelium (red arrow) as well as CHI3L1+ mucous bronchial deposits (blue arrow). (B1) IHC confirms constitutive CHI3L1+ epithelium in colon along with few stromal cells (red arrow) apparently not affected by (B2) burn injury. (C1) Along with epithelium, CHI3L1+ stromal cells are also present in skin (red arrow). (C2) With burn injury, CHI3L1+ granulocytes accumulate at the zone of demarcation.

doi:10.1371/journal.pone.0140440.g003

evaluated under various biomedical applications including wound dressings, nano particles and surface coatings with alleged anti-microbial properties among other [37, 38]. In skin, chitosan induced high expression levels of enzymatically active CHIA but appeared to suppress the expression of CHI3L1 and CHIT1 (Fig 4A). Conversely, in colon, CHI3L1, which showed lowest expression levels under control conditions, was most strongly induced (~30 fold) along with CHIT1 and CHIA (Fig 4B). Thus, chitosan treatment reduced CHI3L1 expression in skin but induced it in colon.

Modulatory effects of poly-D-glucosamine derivatives on the expression of PA14 Pseudomonas strain virulence factors

The induction of chitinases is related to an innate immune response which might favor infections with pathogens such as PS which can specifically interact with chitinase e.g. through the expression of chitin-binding proteins (CBPs). Mammalian CHI3L1 has been demonstrated as a possible ligand of CbpD along with chitin and chitin derivatives, thus implying a possible role in PA14 virulence. In this context we show that the addition of chitin and chitosan to LB bacterial growth media induces CbpD expression during an exponential growth phase (EGP) (Fig 5A). In addition we saw that low molecular chitosan induced CbpD more effectively than chitin (Fig 5B). During early EGP, PA14 also constitutively expresses various virulence factors related to a clinical relevant infection (Fig 5C). Here, we saw that elastaseB, but no other virulence factors, were specifically induced in PA14 by chitin supplemented growth media, consistent with an environmental 'sensing-function' of CbpD during PA14-related opportunistic

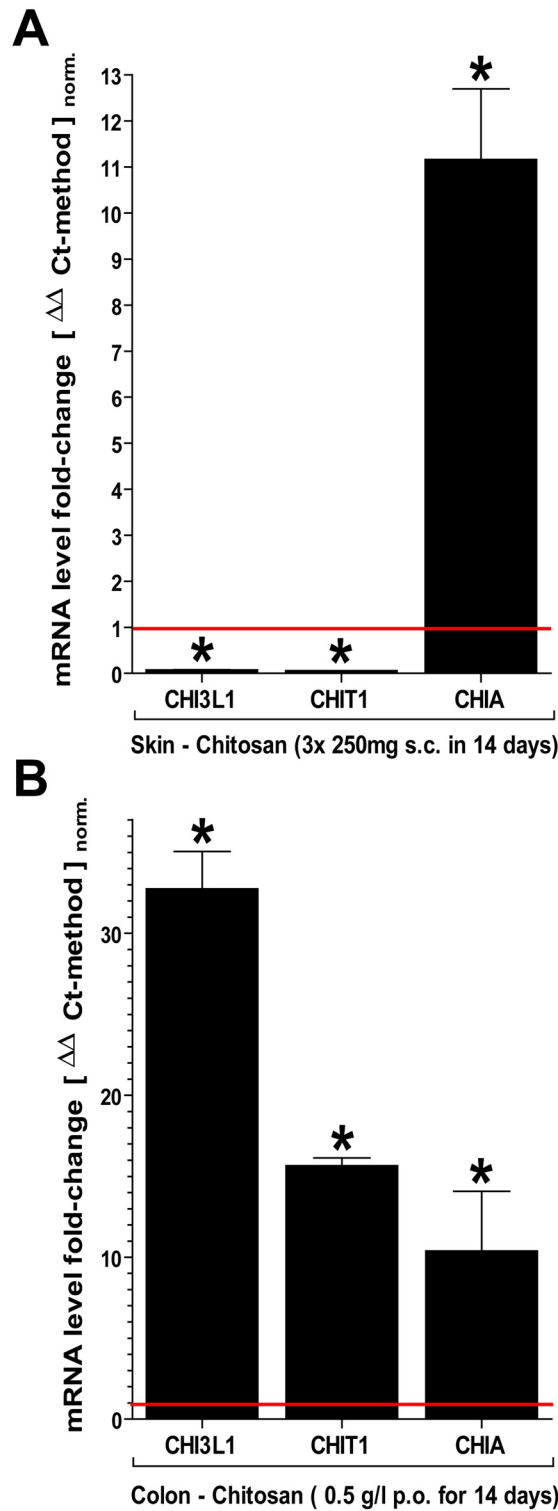


Fig 4. Exposure to chitosan induces chitinase expression in skin and colon. WT mice were exposed to preparations of chitosan (poly-D-glucosamine) s.c. (3x250µg/100µl over 2 weeks) and via drinking water (50mg/l over 2 weeks). (A) With s.c. injection, only CHIA was significantly induced in skin. (B) Chitosan in drinking water induced all chitinases, mostly CHI3L1 (all: qPCR / $\Delta\Delta$ Ct-method: $n \geq 4$; mean \pm SD; * $P < 0.05$; normalized to respective organ control).

doi:10.1371/journal.pone.0140440.g004

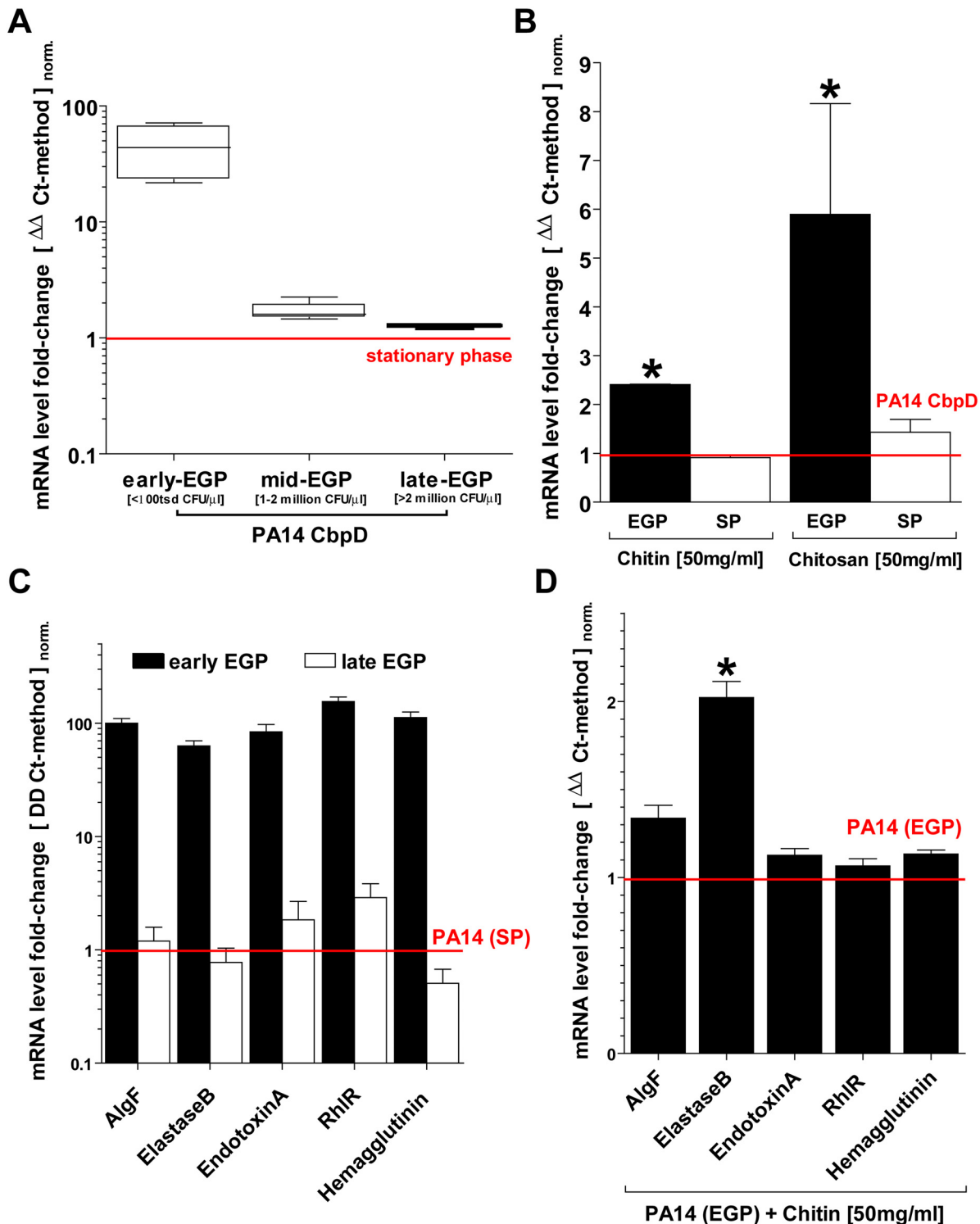


Fig 5. Chitin and chitosan modulate the expression of virulence factors in PA14 Pseudomonas strain. Several factors related to the pathogenicity of Pseudomonas species were evaluated following the addition of chitin (hmv poly-D-glucosamine) and chitosan (lmw poly-D-glucosamine) to lysogeny broth (LB). (A) Chitin-binding-protein Delta (CbpD) is strongly induced early on during the exponential growth phase (EGP) of PA14 strain. (B) Addition of both chitin and chitosan to LB further induces CbpD expression. (C) Various other factors of PA14 pathogenicity are also predominantly expressed during early EGP. (D) However, addition of chitin to LB only further induces ElastaseB but not other virulence factors (all: qPCR / $\Delta\Delta$ Ct-method: $n \geq 3$; mean \pm SD; *P<0.05; normalized to a stationary bacterial growth phase control).

doi:10.1371/journal.pone.0140440.g005

infection [39] (Fig 5D). Thus, Pseudomonas is likely to specifically alter its transcriptional behavior in a wound environment or epithelial surface in the presence of possible ligands for CbpD such as chitinases, chitin or chitosan.

Kaplan–Meier estimator of survival rate in a mouse model of opportunistic wound infection with PA14 strain

In order to assess the in vivo relevance and possible role of mammalian chitinase expression in facilitating opportunistic wound infection, WT mice were exposed to s.c. injections of chitosan 2 weeks prior to burn injury, thus modulating chitinase expression (also see Fig 4). Following burn injury, debrided burn wounds were contaminated with an optimized dose of PA14 strain (S2A Fig). This model of opportunistic PA14 wound infection among others was characterized by a mortality rate of 100% within 5 days. Also, the burn model demonstrated significantly lower mortality rates if animals were ‘immunized’ to PA14 via enteric colonization several weeks before the experiment (S2A Fig). In this model, we saw a reduced likelihood of fatal PA14 septicemia in animals exposed to chitosan prior to burn injury (Fig 6).

Kaplan–Meier estimator of survival rate in a mouse model of entero-hematogenic translocation of PA14 strain

Increased adhesion, endocytosis and inter-epithelial translocation through the enterocyte-barrier of the intestine have been established as a mechanism of bacterial invasion. We optimized a WT mouse model in which oral gavages with a defined bacterial dose ensured enteric presence of PA14 during the post-burn SIR (S3 Fig). Also in this model, enteric chitinase

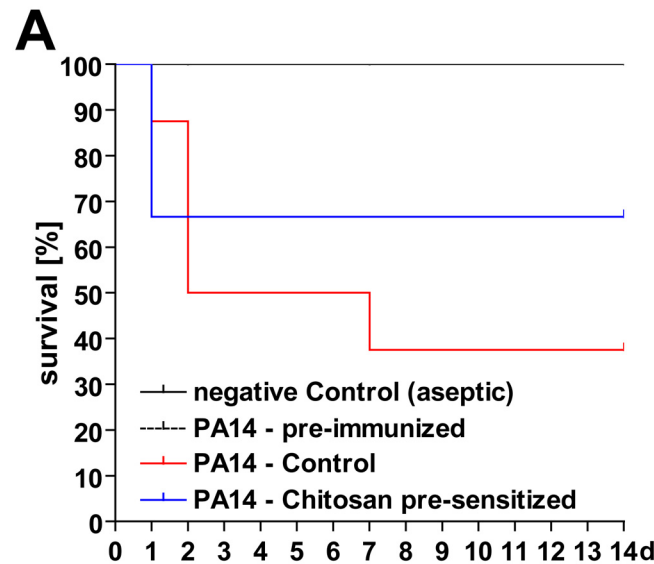


Fig 6. A modulation of chitinase expression in skin increases survival rates in a mouse model of opportunistic wound infection with PA14 strain. Experimental design: (Step 1) WT mice were injected low-dose s.c. with PA14 strain (10^1 CFU/100 μ l; see S2 Fig) four weeks prior to experiments in order to induce a uniform PA14-specific immunity. (Step 2) For an additional two weeks animals received s.c.-injections of chitosan (3x250 μ g/100 μ l) while the control groups received vehicle in order to induce the expression of chitinases in skin. (Step 3) At 48h post-burn injury (full thickness, dorsal skin fold, ~20% BSA), the burn area was debrided and contaminated with 10^4 CFU/10 μ l PA14 strain. We saw that animals pre-sensitized with chitosan were less likely to develop lethal PA14 septicemia (PA14 control v.s. PA14 chitosan-pre-sensitized: n = 10, $\chi^2 = 0.31$, P = 0.58, hazard ratio = 1.74).

doi:10.1371/journal.pone.0140440.g006

expression was induced by supplementing chitosan to drinking water (also see Fig 4). We saw that animals with induced enteric chitinase expression prior to burn injury showed mortality rates due to fatal PA14 septicemia of ~70% within 48h opposed to 60% within 72 hours without prior chitosan supplementation of drinking water (Fig 7A). However, group-differences in a leukocyte-count performed on peritoneal lavages (Fig 7B) as well as a CFU-count in blood cultures (Fig 7C) were only significant compared to control but not with 'therapeutic' chitosan treatment prior to enteric colonization with PA14. Thus, a net effect of enteric induction of chitinases appears to be a higher likelihood of fatal PA14 septicemia following burn injury although this could not be linked to blood culture results or peritoneal leukocytosis.

Therapeutic blockage of CHI3L1 using anti-CHI3L1 treatment in a mouse model of PA14 enteric colonization

In order to show a modulation of mammalian chitinase expression as an alternative effective measure to prevent opportunistic infection in the wake of burn injury, we evaluated a WT mouse model in which high-dose anti-CHI3L1 antibody was given simultaneously with burn injury (Fig 8). At least in this model, anti-CHI3L1 treatment did not appear to alter the likelihood of fatal PA14 septicemia due to entero-hematogenic translocation, possibly due to ineffective antibody binding to CHI3L1 expressed on enteric epithelial surfaces.

Discussion

With severe burn injury and the ensuing hyperacute systemic inflammatory response (SIR), the organism is confronted with (i) an impaired innate immune system, as evidenced by a decrease in neutrophil number and function, as well as (ii) a loss of barrier function which promotes SIR-perpetuation and continued depletion of various other cellular and acellular resources. Thus, due to the pro-inflammatory dynamics in severe burn injury, immuno-modulatory approaches may be helpful in improving a given impaired state of the patient's immune system, for example as was suggested for lipid mediators such as resolvins in a burn mouse model [40, 41].

Skin or intestinal or lung epithelium is a physical barrier that provides primary protection against infection. When this barrier is compromised directly or indirectly following burn injury, pathogens have a direct route to infiltrate the body. Hence, a major port of entry of pathogens is the wound itself. Immediately following a thermal burn, the surface of the burn wound is free of microorganisms. Live threatening bacterial colonization of wound areas with opportunistic bacteria including gram-negative (e.g. *Pseudomonas spec.*, *Acinetobacter spec.*, *Enterococcus spec.*, *Escherichia coli spec.*, etc.) but also gram-positive bacteria (e.g. *Staphylococcus aureus spec.*) can commonly be seen within 48 hours post-burn despite significant improvements in critical burn care over the last decades. Most of these pathogens are notable for their increasing resistance to a broad spectrum of different antimicrobial agents. They are mostly considered to originate from the patients' GI and upper respiratory tract but also the hospital environment [42–46].

Increasing evidence supports the notion that inhibition of bacterial translocation into the wound site or thorough the intestinal barrier may be an effective alternative to defer clinical relevant infections of wounds. In this context, the expression of mammalian chitinases (in humans: glycosyl hydrolase family 18) has been reevaluated apart from a purely degrading function of non-mammalian chitin derivatives. Most interestingly, human CHI3L1, also known as human cartilage glycoprotein (HCgp-39) or YKL-40, is a 'chitinase' with no enzyme activity, as opposed to chitinase 1 (chitotriosidase) and acidic mammalian chitinase (AMCase), with putative signaling and immune-regulatory functions based on findings that (i) chitinases

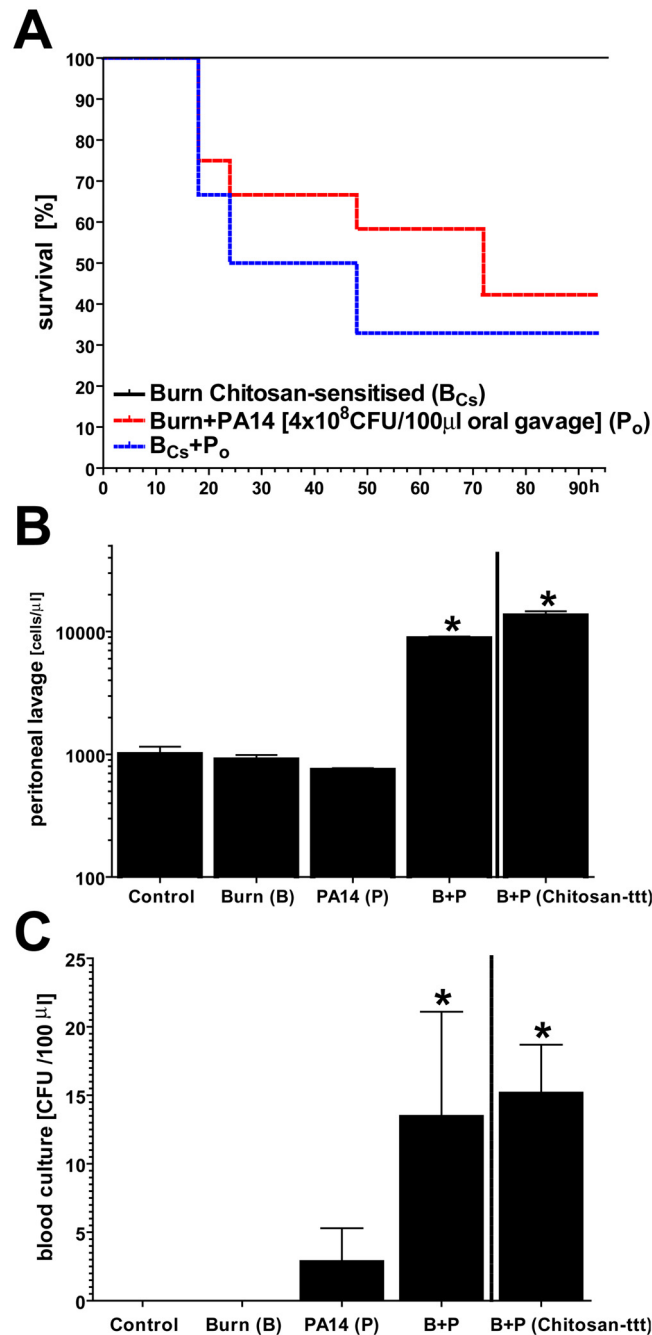


Fig 7. Induced enteric chitinase expression likely promotes entero-hematogenic bacterial translocation following burn injury in a mouse model of enteric colonization with PA14 strain. Experimental design: (Step 1) Acidified drinking water was supplemented with chitosan (50mg/l) four weeks prior to experiments while controls continued to receive unsupplemented acidified water. (Step 2) 48 hours prior to burn injury, enteric colonization with PA14 strain of WT mice was performed (see S3 Fig). (Step 3) With burn injury (full thickness, dorsal skin fold, ~20% BSA), (A) the Kaplan–Meier estimator of survival suggested a higher incidence of lethal PA14 septicemia in animals pre-sensitized with chitosan in drinking water (Burn+PA14 v.s. Burn+PA14+ chitosan-pre-sensitized: $n = 12$, $\chi^2 = 0.39$, $P = 0.53$, hazard ratio = 0.84). (B) Cell count of peritoneal lavage (mostly neutrophils) suggested burn-induced peritonitis due to enteric translocation of PA14 strain, with or without enteric chitinase induction. (C) Similarly, blood culture suggested burn-induced entero-hematogenic translocation of PA14 strain. (B & C: $n \geq 10$; mean \pm SD; * $P < 0.05$; normalized to control)

doi:10.1371/journal.pone.0140440.g007

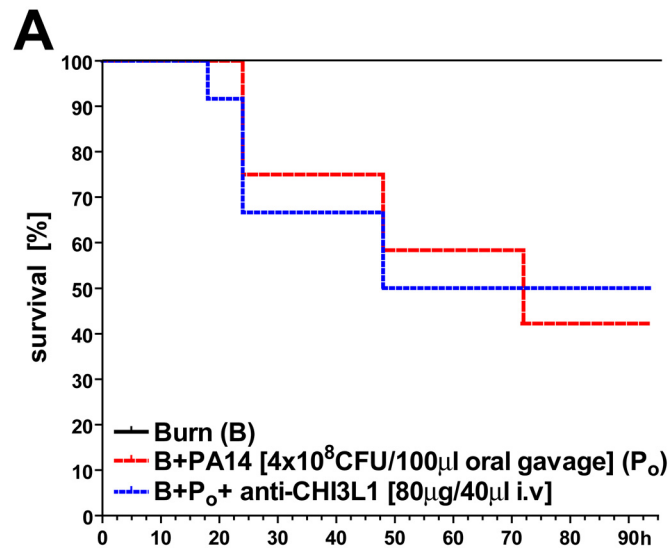


Fig 8. Anti-CHI3L1 pre-treatment did not affect burn-induced PA14 septicemia in a mouse model of PA14 enteric colonization. Experimental design: (Step 1) 72 hours prior to burn injury, enteric PA14 colonization of WT mice was performed (see S3 Fig). 24 hours prior to burn injury, animals received anti-CHI3L1 i.v. treatment in order to block CHI3L1 expression, alleged signaling and bacterial translocation. However, no significant effect on the Kaplan–Meier estimator compared to control was observed.

doi:10.1371/journal.pone.0140440.g008

without enzymatic activity (including CHI3L1) typically act as lectins due to the presence of a preserved carbohydrate-binding domain, and are therefore called “chi-lectins” [47, 48]; (ii) CHI3L1 is strongly expressed by macrophages in the synovial membrane of patients with rheumatoid arthritis (RA), suggesting a potential role as an auto-antigen driving T cell-mediated immune responses in RA [17, 49–52]; (iii) increased circulating levels of CHI3L1 have been reported in the serum of patients with colon cancer [47, 53, 54], inflammatory bowel disease [55] and liver cirrhosis [56] with undetectable levels in serum of healthy individuals [57]; (iv) CHI3L1 secretion is increased by several cell types upon stimulation by inflammatory mediators. CHI3L1 has also been shown to downregulate responses to the same mediators [17], suggesting that CHI3L1 may be part of a feedback control mechanism to regulate the inflammatory response. This also suggests an additional mechanism whereby elevated chitinases may promote infection, namely by decreasing pro-inflammatory responses that help wall off bacteria in the gut and skin. However, the biological function of CHI3L1 remains elusive. CHI3L1 is secreted by various cells in vitro, including activated neutrophils [58], granulocytes, differentiated macrophages [59–61] and colon epithelial cells (CECs) [18, 20].

Other mammalian chitinases also seem to play a pathogenic role in local inflammation. For example, it has been reported that acidic mammalian chitinase (AMCase) and Ym-1 are specifically upregulated in response to Th2-mediated inflammation in the lung [62]. IL-13-mediated induction of AMCase by airway epithelial cells and macrophages may underlie the development of airway hyper-responsiveness and inflammatory cell infiltrate in asthma [62]. In addition it has been demonstrated that bacterial chitin-binding proteins play an important role in the degradation of insoluble chitin [63] and Mizoguchi et al. demonstrated that CHI3L1 enhances bacterial adhesion to CECs through the interaction with bacterial CBP [20]. Thus, CHI3L1 over-expression could enhance the adhesion/invasion of intracellular bacteria into intestinal mucosa lining. In this context, the presence of similar CBPs in related micro-organisms (e.g., *S. marcescens*, *S. olivaceoviridis*, *P. aeruginosa*) suggests a common feature of opportunistic infections such as seen with burn wounds.

Our study shows that: (i) in WT mice CHI3L1 and other chitinases show constitutive organ-specific expression levels which (ii) are highly induced under conditions of SIR, especially in the presence of PA14 Pseudomonas strain, most notably in lung and colon epithelium or within a population of activated innate immune cells homing-in on e.g. deepithelialized wound beds; (iii) chitinase expression can be effectively modulated using chitin derivatives such as chitosan via oral or s.c. route administration whereas CHI3L1 expression was upregulated in colon and downregulated in skin; (iv) expression of CbpD and other virulence factors in PA14 Pseudomonas strain can be modulated using chitin-derivatives. Most relevantly, exposure to chitin derivatives prior to burn injury reduced the likelihood of fatal septicemia in a model of PA14 colonization of wound beds. Conversely, we saw strong evidence for increased mortality rates with chitosan-induced up-regulation of chitinase expression within intestinal mucosa prior to burn injury and with enteric presence of PA14 strain. Thus, chitosan-induced down-regulation of CHI3L1 in skin correlated with decreased mortality rates in a model of PA14 wound colonization, as opposed to increased mortality rates with induced upregulation in colonic-epithelium. These observations are supported by a well established CHI3L1-dependent PS adhesion and translocation through enteric epithelium. Since it is also well established that especially innate immunity is dysfunctional [40, 41] following severe burn injury, we speculate that leukocytes might not be able to effectively lyse more 'resistant' bacteria such as PS once internalized, actively promoting septicemia. Known anti-microbial effects of chitin and chitosan, for example when used in wound dressings [37, 38], might also be explained by preventing PS septicemia via leukocyte-dependent translocation. While the administration of anti-CHI3L1 antibody was not therapeutically effective for various possible reasons, a modulation of CHI3L1 expression still appears to be a feasible strategy if applied locally on wound beds but could prove counter-productive if leading to enteric upregulation of CHI3L1, at least during an initial 'vulnerable phase' with impaired immunity following burn injury.

Here, a link between CHI3L1-expression and the clinical outcome of opportunistic infection in the context of burn injury could be further established using CHI3L1 knock-out models. The latter were not available to the authors at the time. Also, further investigation is warranted regarding possible effects of CHI3L1-expression e.g. on phagocytotic activity and or pro-inflammatory signaling of innate immune cells in the context of CbpD-expressing bacteria.

We conclude, based on the data presented herein, that there is an apparent interaction between CHI3L1 expression on epithelial surfaces or innate immune cells and the ability of CbpD-expressing PA14 Pseudomonas strain to quickly translocate through critical barriers, thus causing septicemia under conditions where innate immunity is temporarily compromised due to overwhelming SIR such as seen in severe burn injury [9–13]. Thus, the idea of a topical but not oral therapy using chitin derivatives might be worthwhile to pursue in order to defer a rapid colonization, raising the likelihood of fatal septicemia emanating from burn wounds. Since a time course of burn wound colonization with multi-resistant Pseudomonas strain can be quite prolonged and is highly problematic in terms of secondary-intent wound closure using bio-active wound dressings or grafts [64] (xenograft, cadaveric skin grafts, autologous skin grafts), a vaccination strategy [65–67] based on CbpD expression might also be feasible as demonstrated by the investigated animal models.

Supporting Information

S1 Fig. Anti-CHI3L1 isotype controls. Please refer to [Fig 3](#). (A) lung tissue, (B) colon tissue, (C) skin tissue. (TIF)

S2 Fig. Kaplan–Meier estimator of survival rate for s.c. injection of a CFU-defined amount of PA14 stock in a mouse model. (A) WT animals were injected s.c. on the dorsal skin fold with colony forming unit (CFU)-defined dosages of PA14 Pseudomonas strain (washed, stock at 4°C, 100µl saline vehicle). Lethal outcomes of ensuing septicemia occurred at 10⁵ CFU count. We defined optimal dosage for outcome studies with 10⁷ CFU count. (B) Both models of excisional and debrided-burn dorsal wounds were evaluated prior to chitinase-modulation experiments. Here, topical contamination of dorsal wounds with PA14 is related to a high mortality rate, especially following burn injury. Interestingly, previous non-lethal infections with PA14 (10¹ CFU/100µl saline vehicle s.c.) 4 weeks prior to experiments strongly decreased lethality.

(TIF)

S3 Fig. Kaplan–Meier estimator of survival rate in a mouse model of burn-induced enteric-derived PA14 septicemia. Experimental design: 48 hours prior to burn injury, enteric colonization of WT mice was achieved using oral gavage with washed PA14 strain (10⁸ CFU/100µl). Compared to non-PA14 colonized animals, this led to highly significant mortality rate likely due to post-burn bacterial entero-hematogenic translocation.

(TIF)

Acknowledgments

PA14 Pseudomonas strain was kindly provided by Kolter, R., Department of Microbiology and Molecular Genetics, Harvard Medical School, Boston, MA 02115, USA.

This work was partially supported by the Shriners Hospitals for Children.

Author Contributions

Conceived and designed the experiments: SB SJP RV FB MLY AG. Performed the experiments: SB SJP KS. Analyzed the data: SB SJP KS FB RV AG. Wrote the paper: SB RV FB MLY.

References

1. Brusselaers N, Monstrey S, Vogelaers D, Hoste E, Blot S. Severe burn injury in Europe: a systematic review of the incidence, etiology, morbidity, and mortality. *Critical care*. 2010; 14(5):R188. doi: [10.1186/cc9300](https://doi.org/10.1186/cc9300) PMID: [20958968](https://pubmed.ncbi.nlm.nih.gov/20958968/); PubMed Central PMCID: [PMC3219295](https://pubmed.ncbi.nlm.nih.gov/PMC3219295/).
2. Atiyeh BS, Gunn SW, Hayek SN. State of the art in burn treatment. *World journal of surgery*. 2005; 29(2):131–48. doi: [10.1007/s00268-004-1082-2](https://doi.org/10.1007/s00268-004-1082-2) PMID: [15654666](https://pubmed.ncbi.nlm.nih.gov/15654666/).
3. Mulcahy LR, Isabella VM, Lewis K. Pseudomonas aeruginosa biofilms in disease. *Microbial ecology*. 2014; 68(1):1–12. doi: [10.1007/s00248-013-0297-x](https://doi.org/10.1007/s00248-013-0297-x) PMID: [24096885](https://pubmed.ncbi.nlm.nih.gov/24096885/); PubMed Central PMCID: [PMC3977026](https://pubmed.ncbi.nlm.nih.gov/PMC3977026/).
4. Karavolos MH, Khan CM. Multidirectional chemical signalling between Mammalian hosts, resident microbiota, and invasive pathogens: neuroendocrine hormone-induced changes in bacterial gene expression. *Advances in experimental medicine and biology*. 2014; 817:241–53. doi: [10.1007/978-1-4939-0897-4_11](https://doi.org/10.1007/978-1-4939-0897-4_11) PMID: [24997037](https://pubmed.ncbi.nlm.nih.gov/24997037/).
5. Azzopardi EA, Azzopardi E, Camilleri L, Villalpalos J, Boyce DE, Dziewulski P, et al. Gram negative wound infection in hospitalised adult burn patients—systematic review and meta-analysis. *PLoS one*. 2014; 9(4):e95042. doi: [10.1371/journal.pone.0095042](https://doi.org/10.1371/journal.pone.0095042) PMID: [24751699](https://pubmed.ncbi.nlm.nih.gov/24751699/); PubMed Central PMCID: [PMC3994014](https://pubmed.ncbi.nlm.nih.gov/PMC3994014/).
6. Holmes CJ, Plichta JK, Gamelli RL, Radek KA. Dynamic Role of Host Stress Responses in Modulating the Cutaneous Microbiome: Implications for Wound Healing and Infection. *Advances in wound care*. 2015; 4(1):24–37. doi: [10.1089/wound.2014.0546](https://doi.org/10.1089/wound.2014.0546) PMID: [25566412](https://pubmed.ncbi.nlm.nih.gov/25566412/); PubMed Central PMCID: [PMC4281854](https://pubmed.ncbi.nlm.nih.gov/PMC4281854/).
7. Wong VW, Martindale RG, Longaker MT, Gurtner GC. From germ theory to germ therapy: skin microbiota, chronic wounds, and probiotics. *Plastic and reconstructive surgery*. 2013; 132(5):854e–61e. doi: [10.1097/PRS.0b013e3182a3c11e](https://doi.org/10.1097/PRS.0b013e3182a3c11e) PMID: [24165637](https://pubmed.ncbi.nlm.nih.gov/24165637/).

8. Shimizu K, Ogura H, Asahara T, Nomoto K, Matsushima A, Hayakawa K, et al. Gut microbiota and environment in patients with major burns—A preliminary report. *Burns: journal of the International Society for Burn Injuries*. 2014. doi: [10.1016/j.burns.2014.10.019](https://doi.org/10.1016/j.burns.2014.10.019) PMID: [25465986](https://pubmed.ncbi.nlm.nih.gov/25465986/).
9. Shen H, de Almeida PE, Kang KH, Yao P, Chan CW. Burn injury triggered dysfunction in dendritic cell response to TLR9 activation and resulted in skewed T cell functions. *PloS one*. 2012; 7(11):e50238. doi: [10.1371/journal.pone.0050238](https://doi.org/10.1371/journal.pone.0050238) PMID: [23189191](https://pubmed.ncbi.nlm.nih.gov/23189191/); PubMed Central PMCID: [PMC3506591](https://pubmed.ncbi.nlm.nih.gov/PMC3506591/).
10. Lord JM, Midwinter MJ, Chen YF, Belli A, Brohi K, Kovacs EJ, et al. The systemic immune response to trauma: an overview of pathophysiology and treatment. *Lancet*. 2014; 384(9952):1455–65. doi: [10.1016/S0140-6736\(14\)60687-5](https://doi.org/10.1016/S0140-6736(14)60687-5) PMID: [25390327](https://pubmed.ncbi.nlm.nih.gov/25390327/).
11. Thompson CM, Park CH, Maier RV, O'Keefe GE. Traumatic injury, early gene expression, and gram-negative bacteremia. *Critical care medicine*. 2014; 42(6):1397–405. doi: [10.1097/CCM.000000000000218](https://doi.org/10.1097/CCM.000000000000218) PMID: [24561564](https://pubmed.ncbi.nlm.nih.gov/24561564/).
12. Aziz M, Jacob A, Yang WL, Matsuda A, Wang P. Current trends in inflammatory and immunomodulatory mediators in sepsis. *Journal of leukocyte biology*. 2013; 93(3):329–42. doi: [10.1189/jlb.0912437](https://doi.org/10.1189/jlb.0912437) PMID: [23136259](https://pubmed.ncbi.nlm.nih.gov/23136259/); PubMed Central PMCID: [PMC3579020](https://pubmed.ncbi.nlm.nih.gov/PMC3579020/).
13. Duan X, Yarmush D, Leeder A, Yarmush ML, Mitchell RN. Burn-induced immunosuppression: attenuated T cell signaling independent of IFN-gamma- and nitric oxide-mediated pathways. *Journal of leukocyte biology*. 2008; 83(2):305–13. doi: [10.1189/jlb.0407228](https://doi.org/10.1189/jlb.0407228) PMID: [18024716](https://pubmed.ncbi.nlm.nih.gov/18024716/).
14. Smyth D, McKay CM, Gulbransen BD, Phan VC, Wang A, McKay DM. Interferon-gamma signals via an ERK1/2-ARF6 pathway to promote bacterial internalization by gut epithelia. *Cellular microbiology*. 2012; 14(8):1257–70. doi: [10.1111/j.1462-5822.2012.01796.x](https://doi.org/10.1111/j.1462-5822.2012.01796.x) PMID: [22463716](https://pubmed.ncbi.nlm.nih.gov/22463716/).
15. Lewis K, Lutgendorff F, Phan V, Soderholm JD, Sherman PM, McKay DM. Enhanced translocation of bacteria across metabolically stressed epithelia is reduced by butyrate. *Inflammatory bowel diseases*. 2010; 16(7):1138–48. doi: [10.1002/ibd.21177](https://doi.org/10.1002/ibd.21177) PMID: [20024905](https://pubmed.ncbi.nlm.nih.gov/20024905/).
16. Rojas Y, Finnerty CC, Radhakrishnan RS, Herndon DN. Burns: an update on current pharmacotherapy. *Expert opinion on pharmacotherapy*. 2012; 13(17):2485–94. doi: [10.1517/14656566.2012.738195](https://doi.org/10.1517/14656566.2012.738195) PMID: [23121414](https://pubmed.ncbi.nlm.nih.gov/23121414/); PubMed Central PMCID: [PMC3576016](https://pubmed.ncbi.nlm.nih.gov/PMC3576016/).
17. Ling H, Recklies AD. The chitinase 3-like protein human cartilage glycoprotein 39 inhibits cellular responses to the inflammatory cytokines interleukin-1 and tumour necrosis factor-alpha. *The Biochemical journal*. 2004; 380(Pt 3):651–9. doi: [10.1042/BJ20040099](https://doi.org/10.1042/BJ20040099) PMID: [15015934](https://pubmed.ncbi.nlm.nih.gov/15015934/); PubMed Central PMCID: [PMC1224214](https://pubmed.ncbi.nlm.nih.gov/PMC1224214/).
18. Mizoguchi E. Chitinase 3-like-1 exacerbates intestinal inflammation by enhancing bacterial adhesion and invasion in colonic epithelial cells. *Gastroenterology*. 2006; 130(2):398–411. Epub 2006/02/14. S0016-5085(05)02436-4 [pii] doi: [10.1053/j.gastro.2005.12.007](https://doi.org/10.1053/j.gastro.2005.12.007) PMID: [16472595](https://pubmed.ncbi.nlm.nih.gov/16472595/).
19. Kawada M, Hachiya Y, Arihiro A, Mizoguchi E. Role of mammalian chitinases in inflammatory conditions. *The Keio journal of medicine*. 2007; 56(1):21–7. PMID: [17392594](https://pubmed.ncbi.nlm.nih.gov/17392594/).
20. Kawada M, Chen CC, Arihiro A, Nagatani K, Watanabe T, Mizoguchi E. Chitinase 3-like-1 enhances bacterial adhesion to colonic epithelial cells through the interaction with bacterial chitin-binding protein. *Laboratory investigation; a journal of technical methods and pathology*. 2008; 88(8):883–95. doi: [10.1038/labinvest.2008.47](https://doi.org/10.1038/labinvest.2008.47) PMID: [18490894](https://pubmed.ncbi.nlm.nih.gov/18490894/).
21. Kamba A, Lee IA, Mizoguchi E. Potential association between TLR4 and chitinase 3-like 1 (CHI3L1/YKL-40) signaling on colonic epithelial cells in inflammatory bowel disease and colitis-associated cancer. *Current molecular medicine*. 2013; 13(7):1110–21. PMID: [23170831](https://pubmed.ncbi.nlm.nih.gov/23170831/); PubMed Central PMCID: [PMC3661706](https://pubmed.ncbi.nlm.nih.gov/PMC3661706/).
22. Lee CG, Da Silva CA, Dela Cruz CS, Ahangari F, Ma B, Kang MJ, et al. Role of chitin and chitinase/chitinase-like proteins in inflammation, tissue remodeling, and injury. *Annual review of physiology*. 2011; 73:479–501. doi: [10.1146/annurev-physiol-012110-142250](https://doi.org/10.1146/annurev-physiol-012110-142250) PMID: [21054166](https://pubmed.ncbi.nlm.nih.gov/21054166/); PubMed Central PMCID: [PMC3864643](https://pubmed.ncbi.nlm.nih.gov/PMC3864643/).
23. Ridker PM, Chasman DI, Rose L, Loscalzo J, Elias JA. Plasma levels of the proinflammatory chitin-binding glycoprotein YKL-40, variation in the chitinase 3-like 1 gene (CHI3L1), and incident cardiovascular events. *Journal of the American Heart Association*. 2014; 3(3):e000897. doi: [10.1161/JAHA.114.000897](https://doi.org/10.1161/JAHA.114.000897) PMID: [24958781](https://pubmed.ncbi.nlm.nih.gov/24958781/); PubMed Central PMCID: [PMC4309091](https://pubmed.ncbi.nlm.nih.gov/PMC4309091/).
24. Libreros S, Garcia-Areas R, Shibata Y, Carrio R, Torroella-Kouri M, Iragavarapu-Charyulu V. Induction of proinflammatory mediators by CHI3L1 is reduced by chitin treatment: decreased tumor metastasis in a breast cancer model. *International journal of cancer Journal international du cancer*. 2012; 131(2):377–86. doi: [10.1002/ijc.26379](https://doi.org/10.1002/ijc.26379) PMID: [21866546](https://pubmed.ncbi.nlm.nih.gov/21866546/); PubMed Central PMCID: [PMC3288379](https://pubmed.ncbi.nlm.nih.gov/PMC3288379/).
25. Lee CG, Da Silva CA, Lee JY, Hartl D, Elias JA. Chitin regulation of immune responses: an old molecule with new roles. *Curr Opin Immunol*. 2008; 20(6):684–9. Epub 2008/10/22. doi: [10.1016/j.coi.2008.10.002](https://doi.org/10.1016/j.coi.2008.10.002) S0952-7915(08)00185-4 [pii]. PMID: [18938241](https://pubmed.ncbi.nlm.nih.gov/18938241/); PubMed Central PMCID: [PMC2605627](https://pubmed.ncbi.nlm.nih.gov/PMC2605627/).

26. Adrangi S, Faramarzi MA. From bacteria to human: a journey into the world of chitinases. *Biotechnology advances*. 2013; 31(8):1786–95. doi: [10.1016/j.biotechadv.2013.09.012](https://doi.org/10.1016/j.biotechadv.2013.09.012) PMID: [24095741](https://pubmed.ncbi.nlm.nih.gov/24095741/).
27. Duru S, Yucegee M, Ardic S. Chitinases and lung diseases. *Tuberkuloz ve toraks*. 2013; 61(1):71–5. PMID: [23581271](https://pubmed.ncbi.nlm.nih.gov/23581271/).
28. Frederiksen RF, Paspaliari DK, Larsen T, Storgaard BG, Larsen MH, Ingmer H, et al. Bacterial chitinases and chitin-binding proteins as virulence factors. *Microbiology*. 2013; 159(Pt 5):833–47. doi: [10.1099/mic.0.051839-0](https://doi.org/10.1099/mic.0.051839-0) PMID: [23519157](https://pubmed.ncbi.nlm.nih.gov/23519157/).
29. Manjeet K, Purushotham P, Neeraja C, Podile AR. Bacterial chitin binding proteins show differential substrate binding and synergy with chitinases. *Microbiological research*. 2013; 168(7):461–8. doi: [10.1016/j.micres.2013.01.006](https://doi.org/10.1016/j.micres.2013.01.006) PMID: [23480960](https://pubmed.ncbi.nlm.nih.gov/23480960/).
30. Tran HT, Barnich N, Mizoguchi E. Potential role of chitinases and chitin-binding proteins in host-microbial interactions during the development of intestinal inflammation. *Histology and histopathology*. 2011; 26(11):1453–64. PMID: [21938682](https://pubmed.ncbi.nlm.nih.gov/21938682/); PubMed Central PMCID: [PMC3181078](https://pubmed.ncbi.nlm.nih.gov/PMC3181078/).
31. Folders J, Tommassen J, van Loon LC, Bitter W. Identification of a chitin-binding protein secreted by *Pseudomonas aeruginosa*. *Journal of bacteriology*. 2000; 182(5):1257–63. PMID: [10671445](https://pubmed.ncbi.nlm.nih.gov/10671445/); PubMed Central PMCID: [PMC94410](https://pubmed.ncbi.nlm.nih.gov/PMC94410/).
32. Bohr S, Patel SJ, Shen K, Vitalo AG, Brines M, Cerami A, et al. Alternative erythropoietin-mediated signaling prevents secondary microvascular thrombosis and inflammation within cutaneous burns. *Proceedings of the National Academy of Sciences of the United States of America*. 2013; 110(9):3513–8. doi: [10.1073/pnas.1214099110](https://doi.org/10.1073/pnas.1214099110) PMID: [23401545](https://pubmed.ncbi.nlm.nih.gov/23401545/); PubMed Central PMCID: [PMC3587271](https://pubmed.ncbi.nlm.nih.gov/PMC3587271/).
33. Carter PB, Collins FM. The route of enteric infection in normal mice. *J Exp Med*. 1974; 139(5):1189–203. Epub 1974/05/01. PMID: [4596512](https://pubmed.ncbi.nlm.nih.gov/4596512/); PubMed Central PMCID: [PMC2139651](https://pubmed.ncbi.nlm.nih.gov/PMC2139651/).
34. Nemzek JA, Hugunin KM, Opp MR. Modeling sepsis in the laboratory: merging sound science with animal well-being. *Comparative medicine*. 2008; 58(2):120–8. PMID: [18524169](https://pubmed.ncbi.nlm.nih.gov/18524169/); PubMed Central PMCID: [PMC2703167](https://pubmed.ncbi.nlm.nih.gov/PMC2703167/).
35. Friedman L, Kolter R. Two genetic loci produce distinct carbohydrate-rich structural components of the *Pseudomonas aeruginosa* biofilm matrix. *J Bacteriol*. 2004; 186(14):4457–65. Epub 2004/07/03. doi: [10.1128/JB.186.14.4457-4465.2004](https://doi.org/10.1128/JB.186.14.4457-4465.2004) PMID: [15231777](https://pubmed.ncbi.nlm.nih.gov/15231777/); PubMed Central PMCID: [PMC438632](https://pubmed.ncbi.nlm.nih.gov/PMC438632/).
36. Liu Y, Zhou Q, Wang Y, Liu Z, Dong M, Li X, et al. Negative pressure wound therapy decreases mortality in a murine model of burn-wound sepsis involving *Pseudomonas aeruginosa* infection. *PLoS ONE*. 2014; 9(2):e90494. Epub 2014/03/04. doi: [10.1371/journal.pone.0090494](https://doi.org/10.1371/journal.pone.0090494) PONE-D-13-33742 [pii]. PMID: [24587379](https://pubmed.ncbi.nlm.nih.gov/24587379/); PubMed Central PMCID: [PMC3938770](https://pubmed.ncbi.nlm.nih.gov/PMC3938770/).
37. Swartjes JJ, Sharma PK, van Kooten TG, van der Mei HC, Mahmoudi M, Busscher HJ, et al. Current Developments in Antimicrobial Surface Coatings for Biomedical Applications. *Curr Med Chem*. 2014. Epub 2014/09/24. doi: [10.1080/13645707.2014.948888](https://doi.org/10.1080/13645707.2014.948888) PMID: [25245508](https://pubmed.ncbi.nlm.nih.gov/25245508/).
38. Jeon SJ, Oh M, Yeo WS, Galvao KN, Jeong KC. Underlying mechanism of antimicrobial activity of chitosan microparticles and implications for the treatment of infectious diseases. *PLoS ONE*. 2014; 9(3):e92723. Epub 2014/03/25. doi: [10.1371/journal.pone.0092723](https://doi.org/10.1371/journal.pone.0092723) PONE-D-13-51544 [pii]. PMID: [24658463](https://pubmed.ncbi.nlm.nih.gov/24658463/); PubMed Central PMCID: [PMC3962451](https://pubmed.ncbi.nlm.nih.gov/PMC3962451/).
39. Manos J, Arthur J, Rose B, Bell S, Tingpej P, Hu H, et al. Gene expression characteristics of a cystic fibrosis epidemic strain of *Pseudomonas aeruginosa* during biofilm and planktonic growth. *FEMS Microbiol Lett*. 2009; 292(1):107–14. Epub 2009/02/19. doi: [10.1111/j.1574-6968.2008.01472.x](https://doi.org/10.1111/j.1574-6968.2008.01472.x) PMID: [19222585](https://pubmed.ncbi.nlm.nih.gov/19222585/).
40. Kurihara T, Jones CN, Yu YM, Fischman AJ, Watada S, Tompkins RG, et al. Resolvin D2 restores neutrophil directionality and improves survival after burns. *FASEB J*. 2013; 27(6):2270–81. Epub 2013/02/23. doi: [10.1096/fj.12-219519](https://doi.org/10.1096/fj.12-219519) PMID: [23430978](https://pubmed.ncbi.nlm.nih.gov/23430978/); PubMed Central PMCID: [PMC3659356](https://pubmed.ncbi.nlm.nih.gov/PMC3659356/).
41. Bohr S, Patel SJ, Sarin D, Irimia D, Yarmush ML, Berthiaume F. Resolvin D2 prevents secondary thrombosis and necrosis in a mouse burn wound model. *Wound Repair Regen*. 2013; 21(1):35–43. Epub 2012/11/01. doi: [10.1111/j.1524-475X.2012.00853.x](https://doi.org/10.1111/j.1524-475X.2012.00853.x) PMID: [23110665](https://pubmed.ncbi.nlm.nih.gov/23110665/); PubMed Central PMCID: [PMC3746505](https://pubmed.ncbi.nlm.nih.gov/PMC3746505/).
42. Church D, Elsayed S, Reid O, Winston B, Lindsay R. Burn wound infections. *Clin Microbiol Rev*. 2006; 19(2):403–34. Epub 2006/04/15. doi: [10.1128/CMR.19.2.403-434.2006](https://doi.org/10.1128/CMR.19.2.403-434.2006) PMID: [16614255](https://pubmed.ncbi.nlm.nih.gov/16614255/); PubMed Central PMCID: [PMC1471990](https://pubmed.ncbi.nlm.nih.gov/PMC1471990/).
43. Manson WL, Klasen HJ, Sauer EW, Olieman A. Selective intestinal decontamination for prevention of wound colonization in severely burned patients: a retrospective analysis. *Burns*. 1992; 18(2):98–102. Epub 1992/04/01. PMID: [1590940](https://pubmed.ncbi.nlm.nih.gov/1590940/).

44. Manson WL, Pernot PC, Fidler V, Sauer EW, Klasen HJ. Colonization of burns and the duration of hospital stay of severely burned patients. *J Hosp Infect.* 1992; 22(1):55–63. Epub 1992/09/01. PMID: [1358947](#).
45. Erol S, Altoparlak U, Akcay MN, Celebi F, Parlak M. Changes of microbial flora and wound colonization in burned patients. *Burns.* 2004; 30(4):357–61. Epub 2004/05/18. doi: [10.1016/j.burns.2003.12.013](#) S030541790300367X [pii]. PMID: [15145194](#).
46. Barret JP, Herndon DN. Effects of burn wound excision on bacterial colonization and invasion. *Plast Reconstr Surg.* 2003; 111(2):744–50; discussion 51–2. Epub 2003/02/01. doi: [10.1097/01.PRS.0000041445.76730.23](#) PMID: [12560695](#).
47. Cinton C, Johansen JS, Christensen IJ, Price PA, Sorensen S, Nielsen HJ. Serum YKL-40 and colorectal cancer. *Br J Cancer.* 1999; 79(9–10):1494–9. Epub 1999/04/03. doi: [10.1038/sj.bjc.6690238](#) PMID: [10188896](#); PubMed Central PMCID: PMC2362720.
48. Recklies AD, White C, Ling H. The chitinase 3-like protein human cartilage glycoprotein 39 (HC-gp39) stimulates proliferation of human connective-tissue cells and activates both extracellular signal-regulated kinase- and protein kinase B-mediated signalling pathways. *Biochem J.* 2002; 365(Pt 1):119–26. Epub 2002/06/20. doi: [10.1042/BJ20020075](#) BJ20020075 [pii]. PMID: [12071845](#); PubMed Central PMCID: PMC1222662.
49. Baeten D, Demetter P, Cuvelier C, Van Den Bosch F, Kruithof E, Van Damme N, et al. Comparative study of the synovial histology in rheumatoid arthritis, spondyloarthritis, and osteoarthritis: influence of disease duration and activity. *Ann Rheum Dis.* 2000; 59(12):945–53. Epub 2000/11/23. PMID: [11087697](#); PubMed Central PMCID: PMC1753054.
50. Boot RG, van Achterberg TA, van Aken BE, Renkema GH, Jacobs MJ, Aerts JM, et al. Strong induction of members of the chitinase family of proteins in atherosclerosis: chitotriosidase and human cartilage gp-39 expressed in lesion macrophages. *Arterioscler Thromb Vasc Biol.* 1999; 19(3):687–94. Epub 1999/03/12. PMID: [10073974](#).
51. Volck B, Johansen JS, Stoltenberg M, Garbarsch C, Price PA, Ostergaard M, et al. Studies on YKL-40 in knee joints of patients with rheumatoid arthritis and osteoarthritis. Involvement of YKL-40 in the joint pathology. *Osteoarthritis Cartilage.* 2001; 9(3):203–14. Epub 2001/04/13. doi: [10.1053/joca.2000.0377](#) S1063458400903777 [pii]. PMID: [11300743](#).
52. Lee CG. Chitin, chitinases and chitinase-like proteins in allergic inflammation and tissue remodeling. *Yonsei Med J.* 2009; 50(1):22–30. Epub 2009/03/05. doi: [10.3349/ymj.2009.50.1.22](#) PMID: [19259344](#); PubMed Central PMCID: PMC2649864.
53. Johansen JS, Christensen IJ, Jorgensen LN, Olsen J, Rahr HB, Nielsen KT, et al. Serum YKL-40 in Risk Assessment for Colorectal Cancer: A Prospective Study of 4,496 Subjects at Risk of Colorectal Cancer. *Cancer Epidemiol Biomarkers Prev.* 2015. Epub 2015/01/20. doi: [10.1158/1055-9965.EPI-13-1281](#) PMID: [25597749](#).
54. Liu X, Zhang Y, Zhu Z, Ha M, Wang Y. Elevated pretreatment serum concentration of YKL-40: an independent prognostic biomarker for poor survival in patients with colorectal cancer. *Med Oncol.* 2014; 31(8):85. Epub 2014/07/06. doi: [10.1007/s12032-014-0085-6](#) PMID: [24996799](#).
55. Vind I, Johansen JS, Price PA, Munkholm P. Serum YKL-40, a potential new marker of disease activity in patients with inflammatory bowel disease. *Scand J Gastroenterol.* 2003; 38(6):599–605. Epub 2003/06/27. PMID: [12825867](#).
56. Johansen JS, Moller S, Price PA, Bendtsen F, Junge J, Garbarsch C, et al. Plasma YKL-40: a new potential marker of fibrosis in patients with alcoholic cirrhosis? *Scand J Gastroenterol.* 1997; 32(6):582–90. Epub 1997/06/01. PMID: [9200292](#).
57. Tran A, Benzaken S, Saint-Paul MC, Guzman-Granier E, Hastier P, Pradier C, et al. Chondrex (YKL-40), a potential new serum fibrosis marker in patients with alcoholic liver disease. *Eur J Gastroenterol Hepatol.* 2000; 12(9):989–93. Epub 2000/09/28. PMID: [11007134](#).
58. Volck B, Price PA, Johansen JS, Sorensen O, Benfield TL, Nielsen HJ, et al. YKL-40, a mammalian member of the chitinase family, is a matrix protein of specific granules in human neutrophils. *Proc Assoc Am Physicians.* 1998; 110(4):351–60. Epub 1998/08/01. PMID: [9686683](#).
59. Rehli M, Niller HH, Ammon C, Langmann S, Schwarzfischer L, Andreesen R, et al. Transcriptional regulation of CHI3L1, a marker gene for late stages of macrophage differentiation. *J Biol Chem.* 2003; 278(45):44058–67. Epub 2003/08/23. doi: [10.1074/jbc.M306792200](#) M306792200 [pii]. PMID: [12933821](#).
60. Da Silva CA, Hartl D, Liu W, Lee CG, Elias JA. TLR-2 and IL-17A in chitin-induced macrophage activation and acute inflammation. *J Immunol.* 2008; 181(6):4279–86. Epub 2008/09/05. doi: [181/6/4279](#) [pii]. PMID: [18768886](#); PubMed Central PMCID: PMC2577310.
61. Malaguamera L, Musumeci M, Di Rosa M, Scuto A, Musumeci S. Interferon-gamma, tumor necrosis factor-alpha, and lipopolysaccharide promote chitotriosidase gene expression in human macrophages. *J Clin Lab Anal.* 2005; 19(3):128–32. Epub 2005/05/19. doi: [10.1002/jcla.20063](#) PMID: [15900564](#).

62. Elias JA, Lee CG, Zheng T, Ma B, Homer RJ, Zhu Z. New insights into the pathogenesis of asthma. *J Clin Invest*. 2003; 111(3):291–7. Epub 2003/02/06. doi: [10.1172/JCI17748](https://doi.org/10.1172/JCI17748) PMID: [12569150](https://pubmed.ncbi.nlm.nih.gov/12569150/); PubMed Central PMCID: PMC151878.
63. Fuchs RL, McPherson SA, Drahos DJ. Cloning of a *Serratia marcescens* Gene Encoding Chitinase. *Appl Environ Microbiol*. 1986; 51(3):504–9. Epub 1986/03/01. PMID: [16347012](https://pubmed.ncbi.nlm.nih.gov/16347012/); PubMed Central PMCID: PMC238909.
64. Unal S, Ersoz G, Demirkan F, Arslan E, Tutuncu N, Sari A. Analysis of skin-graft loss due to infection: infection-related graft loss. *Ann Plast Surg*. 2005; 55(1):102–6. Epub 2005/06/30. doi: 00000637-200507000-00020 [pii]. PMID: [15985801](https://pubmed.ncbi.nlm.nih.gov/15985801/).
65. DiGiandomenico A, Rao J, Harcher K, Zaidi TS, Gardner J, Neely AN, et al. Intranasal immunization with heterologously expressed polysaccharide protects against multiple *Pseudomonas aeruginosa* infections. *Proc Natl Acad Sci U S A*. 2007; 104(11):4624–9. Epub 2007/03/16. doi: 0608657104 [pii] doi: [10.1073/pnas.0608657104](https://doi.org/10.1073/pnas.0608657104) PMID: [17360574](https://pubmed.ncbi.nlm.nih.gov/17360574/); PubMed Central PMCID: PMC1838651.
66. Manafi A, Kohanteb J, Mehrabani D, Japoni A, Amini M, Naghmachi M, et al. Active immunization using exotoxin A confers protection against *Pseudomonas aeruginosa* infection in a mouse burn model. *BMC Microbiol*. 2009; 9:23. Epub 2009/02/03. doi: [10.1186/1471-2180-9-23](https://doi.org/10.1186/1471-2180-9-23) 1471-2180-9-23 [pii]. PMID: [19183501](https://pubmed.ncbi.nlm.nih.gov/19183501/); PubMed Central PMCID: PMC2644702.
67. Holder IA. *Pseudomonas* vaccination and immunotherapy: an overview. *J Burn Care Rehabil*. 2001; 22(5):311–20. Epub 2001/09/26. PMID: [11570530](https://pubmed.ncbi.nlm.nih.gov/11570530/).