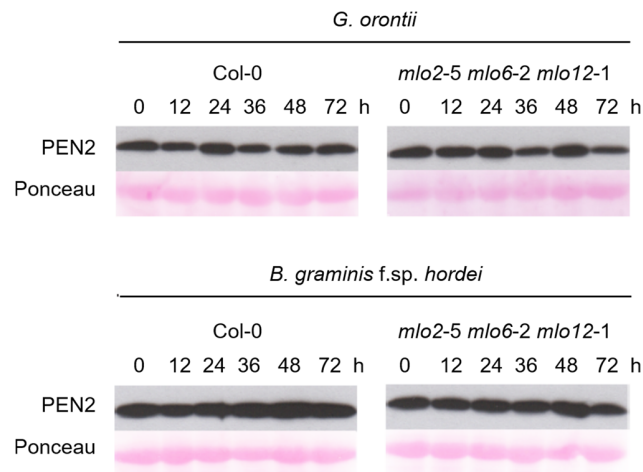


## Key Components of Different Plant Defense Pathways Are Dispensable for Powdery Mildew Resistance of the Arabidopsis *mlo2 mlo6 mlo12* Triple Mutant

Hannah Kuhn, Justine Lorek, Mark Kwaaitaal, Chiara Consonni, Katia Becker, Cristina Micali, Emiel Ver Loren van Themaat, Paweł Bednarek, Tom M. Raaymakers, Michela Appiano, Yuling Bai, Dorothea Meldau, Stephani Baum, Uwe Conrath, Ivo Feussner, and Ralph Panstruga



**Figure S7. PEN2 does not differentially accumulate in *mlo2 mlo6 mlo12* mutant plants after inoculation with *G. orontii* or *B. graminis* f.sp. *hordei*.** Total protein extracts from 4-5-week-old plants inoculated with *G. orontii* or *B. graminis* f.sp. *hordei* for the indicated time points were separated by SDS-PAGE and probed with  $\alpha$ -PEN2 antiserum. Ponceau staining served as a loading control. The experiment was repeated once with similar results.