

Research article

Open Access

Defence reactions in the apoplastic proteome of oilseed rape (*Brassica napus* var. *napus*) attenuate *Verticillium longisporum* growth but not disease symptoms

Saskia Floerl¹, Christine Druebert¹, Andrzej Majcherczyk², Petr Karlovsky³, Ursula Kües² and Andrea Polle*¹

Address: ¹Büsgen-Institut, Abteilung: Forstbotanik and Baumphysiologie, Büsgenweg 2, 37077 Göttingen, Germany, ²Büsgen-Institut, Abteilung: Molekulare Holzbiotechnologie und technische Mykologie, Büsgenweg 2, 37077 Göttingen, Germany and ³Department für Nutzpflanzenwissenschaften, Abteilung: Molekulare Phytopathologie und Mykotoxinforschung, Grisebachstr. 6, 37077 Göttingen, Germany

Email: Saskia Floerl - sfloerl@gwdg.de; Christine Druebert - cdruebe@gwdg.de; Andrzej Majcherczyk - amajche@gwdg.de; Petr Karlovsky - pkarlov@gwdg.de; Ursula Kües - ukuees@gwdg.de; Andrea Polle* - apolle@gwdg.de

* Corresponding author

Published: 18 December 2008

Received: 26 July 2008

BMC Plant Biology 2008, 8:129 doi:10.1186/1471-2229-8-129

Accepted: 18 December 2008

This article is available from: <http://www.biomedcentral.com/1471-2229/8/129>

© 2008 Floerl et al; licensee BioMed Central Ltd.

This is an Open Access article distributed under the terms of the Creative Commons Attribution License (<http://creativecommons.org/licenses/by/2.0>), which permits unrestricted use, distribution, and reproduction in any medium, provided the original work is properly cited.

Abstract

Background: *Verticillium longisporum* is one of the most important pathogens of *Brassicaceae* that remains strictly in the xylem during most stages of its development. It has been suggested that disease symptoms are associated with clogging of xylem vessels. The aim of our study was to investigate extracellular defence reactions induced by *V. longisporum* in the xylem sap and leaf apoplast of *Brassica napus* var. *napus* in relation to the development of disease symptoms, photosynthesis and nutrient status.

Results: *V. longisporum* (strain VL43) did not overcome the hypocotyl barrier until 3 weeks after infection although the plants showed massive stunting of the stem and mild leaf chlorosis. During this initial infection phase photosynthetic carbon assimilation, transpiration rate and nutrient elements in leaves were not affected in VL43-infected compared to non-infected plants. Proteome analysis of the leaf apoplast revealed 170 spots after 2-D-protein separation, of which 12 were significantly enhanced in response to VL43-infection. LS-MS/MS analysis and data base searches revealed matches of VL43-responsive proteins to an endochitinase, a peroxidase, a PR-4 protein and a β -1,3-glucanase. In xylem sap three up-regulated proteins were found of which two were identified as PR-4 and β -1,3-glucanase. Xylem sap of infected plants inhibited the growth of *V. longisporum*.

Conclusion: *V. longisporum* infection did not result in drought stress or nutrient limitations. Stunting and mild chlorosis were, therefore, not consequences of insufficient water and nutrient supply due to VL43-caused xylem obstruction. A distinct array of extracellular PR-proteins was activated that might have limited *Verticillium* spreading above the hypocotyl. In silico analysis suggested that ethylene was involved in up-regulating VL43-responsive proteins.

Background

Verticillium longisporum colonizes the xylem of *Brassicaceae* [1] using carbohydrates, amino acids, and minerals present in the xylem sap as nutrient source. Xylem sap of oilseed rape also contains a vast spectrum of proteins including many enzymes putatively involved in defence; e.g. a disease resistance response protein (PR-1), chitinases (class I, IV), germin-like proteins (subfamily 1) and different peroxidases [2]. A comparison of various species suggested that xylem sap composition was conserved across species [3].

Despite the presence of constitutive defence systems in the extracellular compartment, xylem-invading and inhabiting fungi provoke additional reactions. For example, analyses of tomato xylem sap after infection with the xylem-colonising fungus *Fusarium oxysporum* revealed novel proteins including PR-1, PR-2, and PR-5 [4]. In rice, infection with the vascular pathogen *Xanthomonas oryzae* induced the accumulation of a basic peroxidase in the apoplast of mesophyll cells as well as in xylem vessels [5]. Vascular pathogens such as *Cladosporium fulvum* and *Septoria tritici* affected the leaf apoplast by increasing chitinases and 1,3- β -glucanases or a germin-like protein with activity of a protease-inhibitor, respectively [6,7]. However, the example of *Cladosporium fulvum*, which inactivates chitinases by Avr4 and thereby, protects its cell walls from degradation shows that vascular fungi have developed specific means to disarm plant defences [8].

Recently, proteomic approaches have been introduced to obtain a comprehensive overview of proteins responsive in plants to pathogen attack. The apoplast, which includes the xylem sap, has received specific attention because it is the first compartment where recognition and defence may take place. When plants or cell cultures were challenged with pathogens or elicitors pronounced changes in the extracellular proteome were found such as accumulation of novel protease inhibitors, stimulation of defence proteins, modification in cell proteins, etc. [9-16]. *V. longisporum* is one of the most important diseases of oilseed rape (*Brassica napus* var. *oleifera*) locally causing yield losses in the range of 10 to 50% [17]. Activation of apoplastic defences has not been characterized in this species, although knowledge on these interactions may help to devise strategies for improving plant resistance.

Verticillium-infections have frequently been described as wilting disease [18]. For example, *V. dahliae* infection resulted in partial vessel occlusion by deposits secreted by neighbouring parenchyma cells [19]. These obstructions may delay movement of the fungus physically and also because they may contain antifungal components, e.g., elemental sulphur [19-21]. Since these obstructions can be expected to affect water and nutrient transport, typical

disease symptoms such as wilting, stunting, chlorosis and premature senescence, have been suggested to occur as consequences of water limitations and insufficient nutrient supply [22]. However, clear-cut evidence for this sequence of disease symptoms is still lacking for the *B. napus* – *V. longisporum* pathosystem. Since nutrient limitations and water stress can also affect the plant defence system, it is necessary to characterize the physiological stage of infected and non-infected plants to distinguish between responses evoked by changes in the plant conditions and those related to fungal infection.

The major aim of our study was to identify proteins activated in response to *V. longisporum* in the leaf apoplast and xylem sap of *Brassica napus* and to investigate whether changes in the composition of extracellular fluid were efficient in attenuating fungal proliferation. We have characterized these responses in relation to the development of disease symptoms, photosynthetic electron transport, gas exchange and nutrient status.

Results

Verticillium-induced stunting is not caused by decline in photosynthetic gas exchange or plant nutrition

Stunting of the stem became apparent about 14 days after inoculation of oilseed rape plants with VL43 (Fig. 1). At 21 dpi (days post infection), the infected plants were about two times shorter than non-infected plants and showed initial chlorotic symptoms on leaves but no wilting (Fig. 1A, B). During these initial stages of infection stem biomass production was more inhibited than that of leaves or roots (Fig. 2).

Photosynthetic CO₂ assimilation or transpiration were not affected in VL43-infected plants until 21dpi, indicating that the plants did not suffer from diminished water transport or stomatal limitations (Fig. 3A, B). However, the maximum quantum yield of PSII of infected plants was lower than that of non-infected plants (-20%). This was probably the result of chlorophyll loss, which was about 17% compared with non-infected plants (Fig. 4A, B). Overall, these reductions in chlorophyll and electron transport capacity were apparently too small to affect gross carbon assimilation.

Nutrient elements were measured in leaves between 2 and 4 weeks after VL43 infection to investigate whether VL43 infection had negative effects on nutrition. Potassium, calcium, magnesium, manganese, and iron showed age-dependent changes in infected plants, which were not different from those found in non-infected plants (Table 1). The concentrations of the macro-nutrients N, P, and S were higher in VL43-infected plants than in controls at 28 dpi (Fig. 5). Overall, these analyses show that VL43 infec-

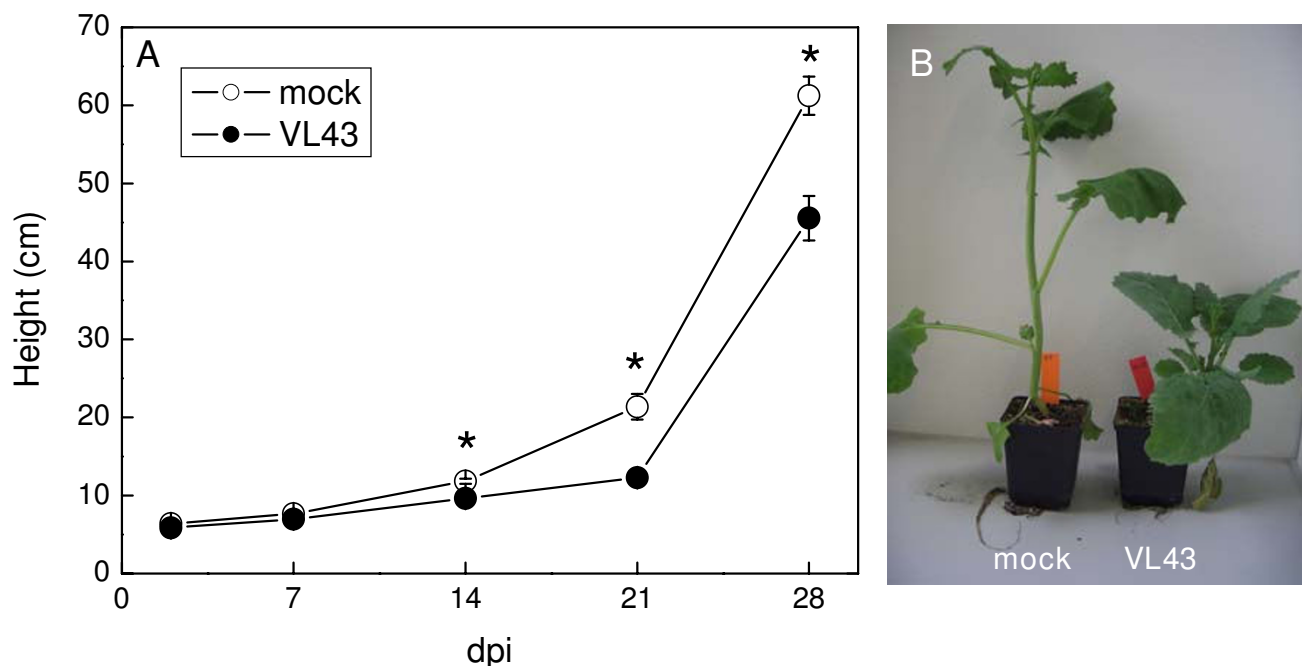


Figure 1
Stunting symptoms in oilseed rape (*Brassica napus* var. *napus*) after infection with *Verticillium longisporum* (VL43). (A) Time course. White circles = non-infected plants, black circles = VL43-infected plants. Data indicate means ($n = 20 \pm SE$). Occasionally, SE is smaller than the symbols. * indicate significant differences between treated and non-treated plants at $P \leq 0.05$. (B) Typical phenotype of controls and infected plants 21 dpi.

tion did not cause nutrient limitations in stages of plant development where severe stunting occurred.

Verticillium-induced defences in xylem sap and apoplast

Figure 6 shows SDS-PAGE gradient gels for an overview of changes occurring in the apoplastic washing fluid of leaves and in the xylem sap at 21 dpi. At earlier stages similar but less pronounced changes were found (not shown). Five apoplast and 3 xylem proteins were strongly increased compared with non-inoculated controls. These changes were not caused by unspecific effects because at this time point of infection, membranes were not destabilized by fungal action as indicated by low electrolyte leakage that was similar in infected plants to that of non-infected plants (Table 2). Furthermore, the estimated contamination of the apoplast with symplastic proteins was extremely low and not increased in infected plants (Table 2). In whole leaf extracts, separated by gradient PAGE, no changes in protein pattern were found, indicating that the influence of VL43 was only subtle (not shown). It is also notable that we have no evidence that at 21 dpi VL43 had overcome the hypocotyl barrier. In stems, *Verticillium* DNA did not exceed the detection limit of 0.5 ng g^{-1} fresh mass (Table 2).

To study the observed changes in greater detail, apoplastic washing fluids were subjected to 2-D electrophoresis to

obtain better resolution and to analyse changes in the protein patterns statistically. Silver stained gels showed 170 ± 9 protein spots (Fig. 7). We analysed 31 major spots common to both VL43-infected and non-infected plants to check if the apoplastic washing fluid was enriched in typical secretory proteins. Only 19 of these spots yielded peptides. The predicted sequences corresponded mainly to extracellular enzymes involved in defence and cell wall metabolism (Table 3). Several spots that were represented by just one peptide could not be identified unambiguously here (spot 10, 17, 18 = predicted aspartyl protease, spot 11 = predicted peroxidase, spot 12–15 = predicted glucanase) but pointed also the presence of typical extracellular enzymes, which have already previously been identified in oilseed rape [2]. With the exception of one protein with unknown function (spot 9) and two spots for a putative α -L-arabinofuranosidase (spots 5 and 7), all identified proteins contained a predicted target peptide for the secretory pathway. Whether the two putative α -L-arabinofuranosidase proteins were in fact mitochondrial proteins as suggested by TargetP analysis, is unlikely because the reliability of the prediction was low (RC4) and the *Raphanus sativus* enzyme, with which the highest homology existed, was shown to be localized in the cell wall fraction [23]. The protein with unknown functions in *B. rapa* var. *pekinensis* (spot 9) displayed high homologies with a pectin esterase from *A. thaliana*. Since pectin este-

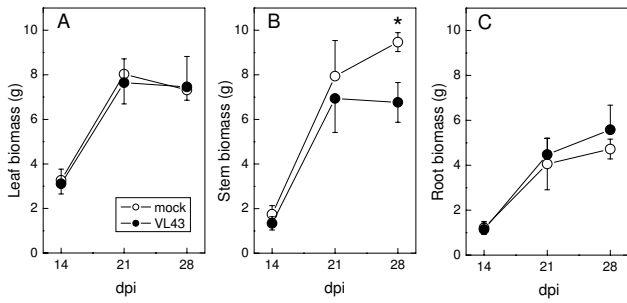


Figure 2
Time course of leaf, stem and root biomass production of oilseed rape (*Brassica napus var. napus*) after infection with *Verticillium longisporum* VL43. White circles = non-infected plants, black circles = VL43-infected plants. Data indicate means ($n = 5 \pm SE$). * indicate significant differences between treated and non-treated plants at $P \leq 0.05$.

rases are known cell wall and xylem sap components [2,3], the predicted chloroplastic localization is also unlikely. Overall, this supports that the washing fluid was enriched in soluble apoplastic proteins and contained only little unspecific contaminants

The total number of spots identified on silver stained gels was not significantly changed in VL43-infected compared with non-infected plants. However, the intensity of 12 spots was significantly increased in the apoplast of VL-43 challenged plants compared with non-infected controls,

whereas no spots with decreased staining intensities were found. Of the 12 spots, 6 could be identified by LC-MS/MS (Table 4) and corresponded to three different proteins, i.e., a basic β -1,3-glucanase (3 spots), a basic endochitinase CHB4 (2 spots) and a peroxidase. The factor by which the intensities increased ranged from 2.4 to 8.3 (Table 4). All proteins contained a predicted signal peptide for the secretory pathway supporting their apoplastic localisation (Table 4). To corroborate these results, differentially appearing spots from PAGE gels shown in Figure 6 were also identified. AVL1 was the basic glucanase corresponding to spots no. 21–23, AVL2 the basic endochitinase CHB4 corresponding to spots no. 34 and 51 and AVL9 the putative peroxidase corresponding to spot no. 54 in the 2-D gels (Fig. 7). AVL 5 was not identified. AVL 7 was a new protein identified as a PR4-type protein (*Brassica rapa* subsp. *pekinensis*, gi|73671284, accession number AF528181, protein score 108), which also contained a predicted signal peptide for the secretory pathway. Since the MW of the PR4-type protein was below 20 kD, it was not resolved on the 2-D gels.

PAGE was also used to investigate the differentially appearing xylem sap proteins (Figure 6, Table 5). Among the three up-regulated protein bands, basic glucanase (XVL1) and PR4-type protein (XVL 3) were identified. XVL2 was not identified. However, its MW corresponded to that of AVL2, the endochitinase CHB4.

To find out whether the changes in the composition of the xylem were competent in attenuating VL43 growth, we

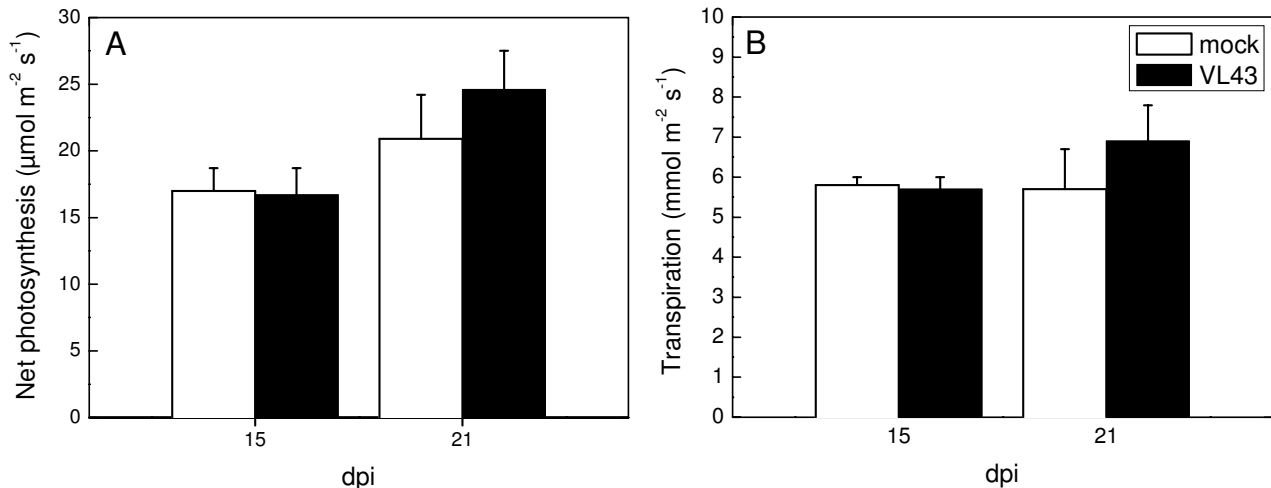


Figure 3
Net photosynthesis (A) and transpiration (B) of oilseed rape (*Brassica napus var. napus*) 15 and 21 dpi after infection with *Verticillium longisporum* VL43. White bars = non-infected plants, black bars = VL43-infected plants. Data indicate means ($n = 8 \pm SE$). Significant differences were not observed.

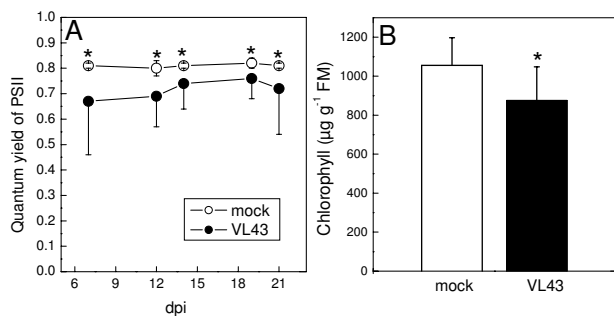


Figure 4
Quantum yield of photosynthesis (A) and chlorophyll concentration (B) of oilseed rape (*Brassica napus* var. *napus*) after infection with *Verticillium longisporum* VL43. White symbols = non-infected plants, black symbols = VL43-infected plants. Data indicate means ($n = 20$ for quantum yield of PSII and $n = 9$ for chlorophyll, \pm SE). * indicate significant differences between treated and non-treated plants at $P \leq 0.05$.

isolated xylem sap from infected and non-infected oilseed rape and grew VL43 in pure xylem sap. Figure 8A shows that fungal growth was significantly inhibited in xylem sap of infected compared to that of non-infected plants, whereas the protein concentration was unaffected (Fig. 8B).

Discussion

Stunting and defence responses are not caused by suppression of carbon assimilation or injury to nutrient or water supply

Stunting occurred before *V. longisporum* colonized above-ground plant parts as reported previously [1]. Our study clearly shows that neither these growth reductions nor beginning symptoms of chlorosis were the result of nutrient limitations or suppression of carbon assimilation. We have also no evidence that *V. longisporum* caused drought stress since the transpiration rate was unaffected in infected plants. This is in contrast to *V. dahliae* infections, which resulted in reduced stomatal opening in species like tomato, potato and egg plants and caused wilting symptoms [24-26]. Eynck et al. [1] observed that clogging of vessels after VL43 infection of oilseed rape occurred infrequently and only at late stages of infection. They assumed, therefore, that these rare obstructions would not affect gross water transport. Our data corroborate this idea.

Although the effect on carbon assimilation was either marginal or not present, both *Verticillium* pathogens caused chlorosis [this study, [22,27,28]]. Since chlorosis preceded fungal proliferation in leaves, it might have been caused by *Verticillium* toxins as suggested earlier [18]. However, chlorophyll loss is also a common symptom of

nutrient deficiencies. Our study excludes the latter reason for *V. longisporum* infected oilseed rape. VL43 had also no effect on nutrient concentrations in *Arabidopsis thaliana* leaves at early stages of stunting [28]. Previous investigations with horticultural crops infected with *V. dahliae* neither revealed nutrient deficiencies [29-31]. Therefore, we conclude that chlorosis is not the consequence of insufficient nutrient supply to leaves. Notably, in our study the amounts of nutrient elements nitrogen, phosphorus and sulphur were higher in older leaves of VL43-infected oilseed rape than in those of non-infected controls. Increased phosphorus or nitrogen concentrations have also been reported in *V. dahliae* infected tomato, eggplant and in VL43-infected *Arabidopsis* [28,31] suggesting a yet unknown interference of *Verticillium* with P or N metabolism.

Vital functions related to nutrition, water supply and photosynthetic carbon assimilation were not compromised – at least not during infection stages when *Verticillium* was still retained in the root system. Therefore, we presume that the observed up-regulation of defence proteins must have been a pathogen-specific effect rather than an unspecific general stress response.

The extracellular proteome and its role in defence against *Verticillium longisporum*

A previous proteomic study of oilseed rape xylem proteins revealed about 300 spots; 69 of these yielded peptide sequences and were putatively identified by matches with database entries as enzymes related to defence and cell wall re-modelling including, e.g., peroxidases, proteases, chitinases, β -1,3-glucanases, germin-like proteins, PR1 protein, thaumatin-like protein, lectins, glycine-rich proteins, polygalacturonases, etc. [2]. We detected 170 protein spots in the apoplastic proteome of rape leaves. Since the focus of our work was on *V. longisporum*-responsive proteins, we analyzed only some of the unregulated proteins to document that apoplastic washing fluids were enriched in proteins with a signal peptide for the secretion pathway (Table 3). Among the identified proteins we confirmed the presence of chitinases, peroxidases, proteases, glucanases, germins, and some proteins involved in cell wall modifications in the leaf apoplast of healthy oilseed rape. A similar composition has also been reported for the apoplast and some cell wall-associated proteins of *Arabidopsis* [32-34]. But some of the proteins present in leaf apoplast of oilseed rape or belonging to secreted proteins of *Arabidopsis* [this study, [28,35]] were not found in xylem saps [2,3]. Among them were α -arabinofuranosidases that are members of a set of glycosidases required for degradation of polymeric substrates such as arabinan, arabinoxylan, and other polysaccharides, which are major components of plant cell wall hemicelluloses [36]. These enzymes provide many microorganisms with soluble car-

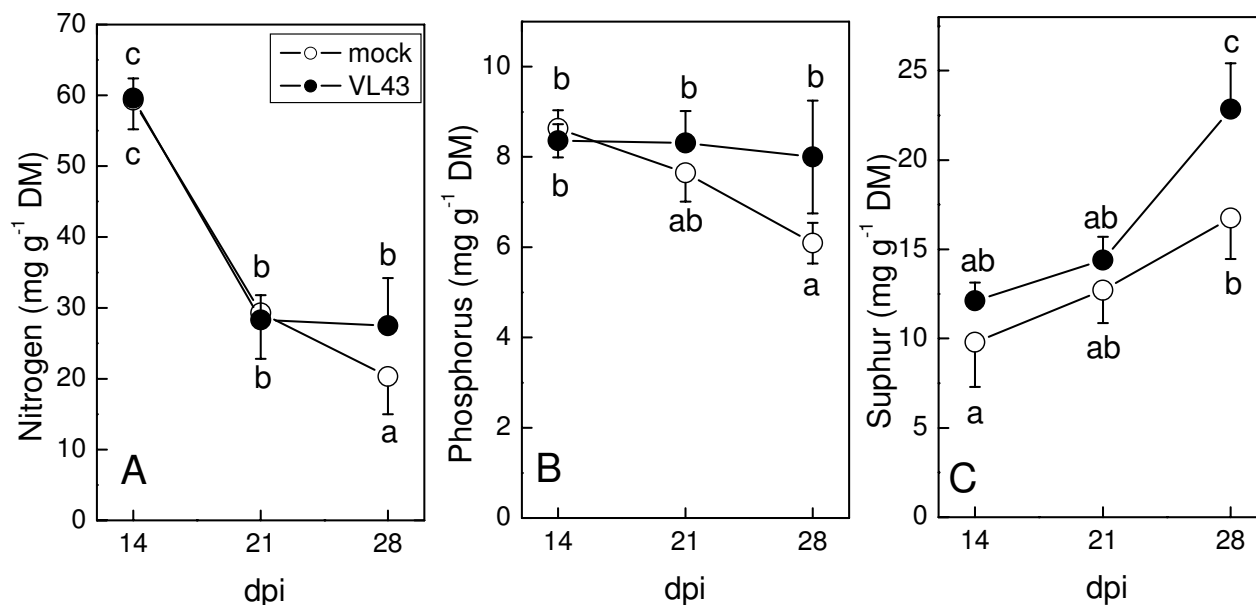


Figure 5
Nitrogen, phosphorus and sulphur concentrations in leaves of oilseed rape (*Brassica napus* var. *napus*) after infection with *Verticillium longisporum* VL43. White circles = non-infected plants, black circles = VL43-infected plants. Data indicate means ($n = 5 \pm \text{SE}$). Different letters indicate significant differences at $P \leq 0.05$.

bohydrates that can be used as carbon or energy sources [36]. Our study shows that these enzymes are part of the healthy apoplast and do not belong to the suite of primary responses to *V. longisporum* infection.

Table 1: Nutrient elements in leaves of oilseed rape (*Brassica napus* var. *napus*) after infection with *Verticillium longisporum* VL43.

Element	dpi	Control	VL43
K (mg g^{-1})	14	46.5 \pm 3.7b	50.5 \pm 1.3b
	21	29.1 \pm 5.6a	31.0 \pm 3.8a
	28	25.7 \pm 2.6a	31.4 \pm 6.1a
Ca (mg g^{-1})	14	30.0 \pm 2.4a	27.5 \pm 2.3a
	21	25.1 \pm 2.9a	29.5 \pm 2.9a
	28	30.5 \pm 4.4a	29.3 \pm 5.3a
Mg (mg g^{-1})	14	4.1 \pm 0.2c	4.2 \pm 0.2bc
	21	3.1 \pm 0.4a	3.3 \pm 0.3ab
	28	3.2 \pm 0.5a	3.4 \pm 0.5abc
Mn ($\mu\text{g g}^{-1}$)	14	57 \pm 7a	62 \pm 8a
	21	49 \pm 6a	63 \pm 13a
	28	62 \pm 7a	48 \pm 6a
Fe ($\mu\text{g g}^{-1}$)	14	92 \pm 11ab	105 \pm 15 b
	21	67 \pm 11a	98 \pm 17ab
	28	72 \pm 9 ab	73 \pm 13 ab

Data indicate means ($n = 5 \pm \text{SE}$). Different letters in blocks indicate significant differences at $P \leq 0.05$.

Our proteomic analysis revealed that only 7% apoplastic proteins were differentially regulated in response to VL43 suggesting that *Verticillium* evoked very distinct responses. All identified VL43-induced apoplastic proteins (β -1,3-glucanase, peroxidase, PR4-protein and endochitinase) are candidates already known to be involved in pathogen defence. For example, β -1,3-glucanases belong to the PR-2 protein family and hydrolyse β -1,3-glucans, major structural compounds of fungal cell walls [37]. Rep et al. [4] have also found a basic and an acidic glucanase in the xylem sap of tomato after infection with the vascular fungus *Fusarium oxysporum*. Infections with *V. dahliae* caused increased expression and activities of glucanases and chitinases [38,39]. The PR4 protein identified here was homolog to that of a *Pseudomonas syringae* inducible PR4 protein of *Brassica rapa* [40,41]. The expression of this gene was induced in *B. rapa* by ethylene but not by salicylic acid or methyl jasmonate [40,42]. In *A. thaliana*, expression of an ethylene-dependent PR4 protein was also increased after *V. longisporum* infection [22]. Since *Arabidopsis* mutants deficient in ethylene signalling (*ein2*, *ein4*, *ein6*) were more susceptible to *V. longisporum*, ethylene-associated signalling pathway appear to be involved in mediating *Verticillium* resistance [22]. Indeed, Genevestigator analysis showed that the *Arabidopsis* homologues of the endochitinase (At2g43590) and β -1,3-glucanase (Atg57240) identified in our study were significantly

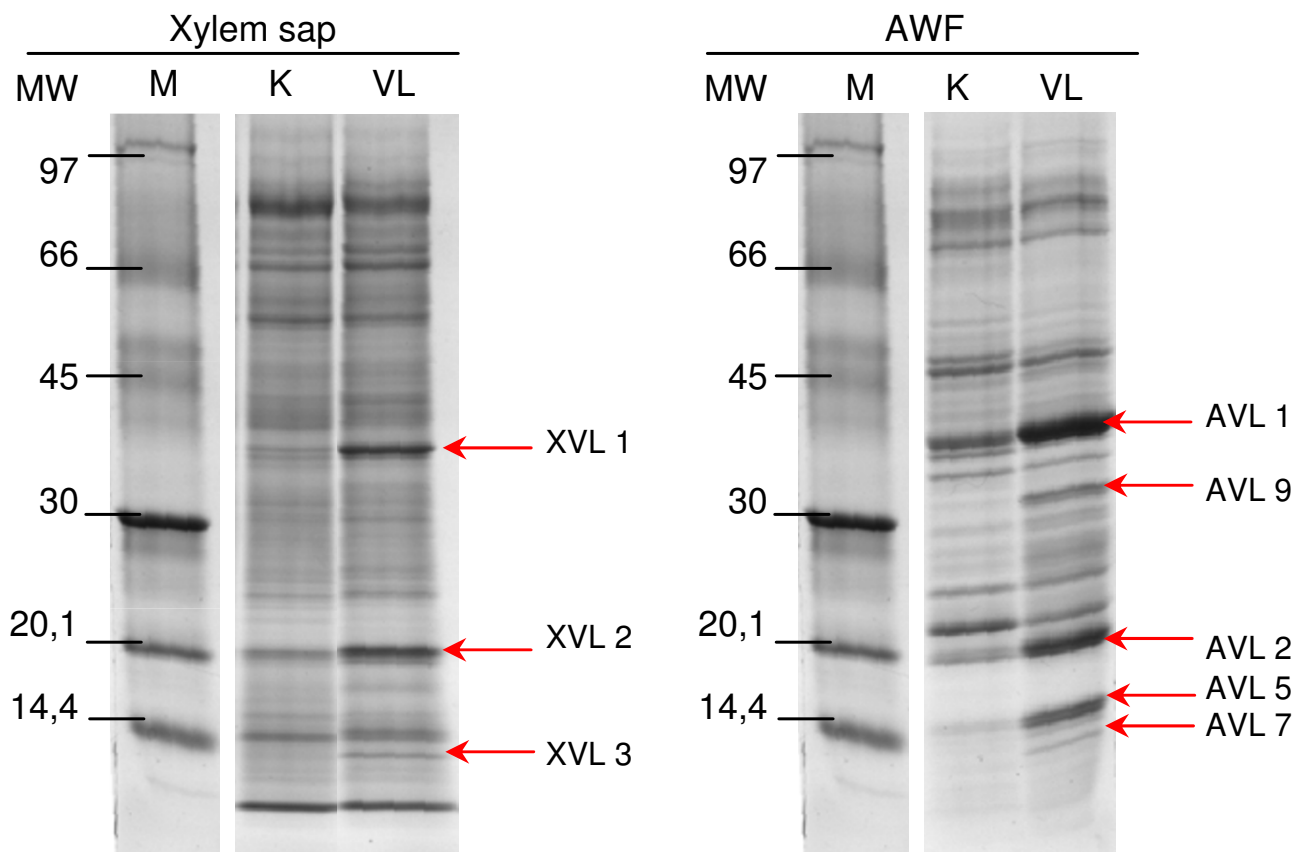


Figure 6
Protein patterns in leaf apoplastic washing fluids and in the xylem sap of oilseed rape (*Brassica napus* var. *napus*) of non-infected plants and 21 dpi after infection with *Verticillium longisporum* VL43. Each lane was loaded with 100 µg protein. Proteins were separated by gradient SDS-PAGE and stained with Coomassie Blue.

increased after ethylene exposure. In other plant species, chitinases and glucanases were also induced by ethylene [43-45]. In summary, this suggests that ethylene plays a yet unresolved role in *V. longisporum* responses of oilseed rape.

Overall, current studies suggest that the PR-response to *V. longisporum* is relatively conserved across different *Brassicaceae* [this study, [22,28]]. Some of these proteins (PR4, β-1,3-glucanase) appeared in xylem sap even before fungal infection had overcome the hypocotyl barrier. Moreo-

Table 2: Electrolyte leakage, fungal DNA, protein content and estimated contamination of apoplastic washing fluids of in leaves of oilseed rape (*Brassica napus* var. *napus*) after infection with *Verticillium longisporum* VL43.

	mock	VL43	P-Value
Electrolyte leakage (%)	7.4 ± 0.6	9.8 ± 1.4	0.1545
VL43-DNA (ng g ⁻¹ FM)	< LOD	< LOD*	
Leaf protein (mg g ⁻¹ FM)	13.7 ± 2.1	13.2 ± 1.6	0.8491
Apoplastic protein (µg g ⁻¹ FM)	13 ± 1	17 ± 2	0.1142
Leaf MDH activity (nkat g ⁻¹ FM)	417.1 ± 31.7	444.4 ± 17.9	0.4742
Apoplastic MDH (nkat g ⁻¹ FM)	0.015 ± 0.003	0.038 ± 0.022	0.3439
Contamination (%)	0.004 ± 0.001	0.008 ± 0.005	0.3940

Data indicate means (n = 5, ± SE), *Limit of detection (LOD) was 0.5 ng g⁻¹ FM

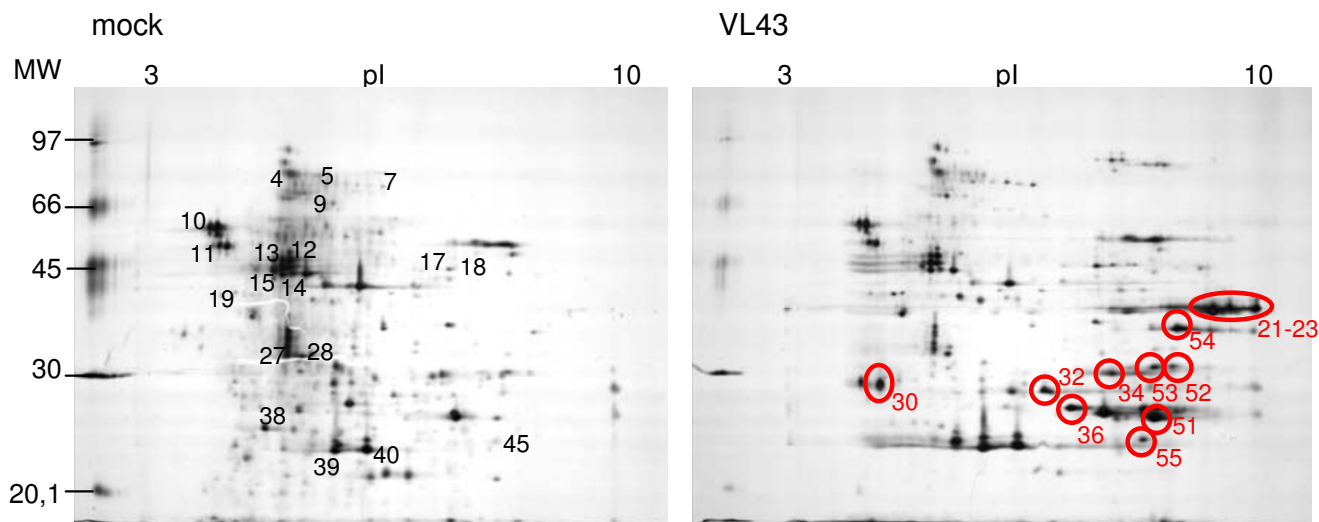


Figure 7
2-D-protein pattern in leaf apoplastic washing fluids of oilseed rape (*Brassica napus* var. *napus*) of non-infected plants and at 21 dpi after infection with *Verticillium longisporum* VL43. Each gel was loaded with 80 μ g protein and stained with silver. Circles indicate differentially appearing protein spots. Numbers indicate proteins for which peptides were obtained.

ver, fungal growth in xylem sap of infected plants was massively inhibited (Fig. 8). Therefore, we suggest that xylem sap proteins may play a crucial role in the control of *V. longisporum*. Since xylem elements consist of dead tissue, the sap proteins must either have been produced in roots or in parenchyma cells in the xylem such as ray cells. Further studies must show whether the biosynthesis of these proteins is stimulated in roots, how they are loaded into the xylem and whether they serve to retain the fungus underground.

Since the VL43-responsive proteins of xylem sap were also increased in the leaf apoplast, it is possible that they were transported with the ascent of sap into the leaf mesophyll, where they might have accumulated. However, the leaf apoplast of infected plants contained additional novel proteins (a peroxidase, an endochitinase and unidentified proteins) compared with the xylem sap. We suspect that the endochitinase found in leaf apoplast also originated from xylem sap because a protein with identical molecular weight was present in the latter. The increases in additional novel defence proteins in the leaf apoplast occurred before significant fungal proliferation in above-ground plant parts was apparent. This suggests that systemic signalling took place. It is currently unknown whether *V. longisporum* produced such signalling compounds, which might have been transported with the xylem sap. We can not exclude that the new xylem sap proteins themselves might have exerted signalling functions or that glucanase activities released elicitors from fungal cell walls which

might have stimulated defence reactions in the leaf. This will require further analysis.

Conclusion

In conclusion our data show that *V. longisporum*-induced stunting of oilseed rape was not caused by nutrient limitations, reduced water supply or suppression of photosynthesis. Although *V. longisporum* had not yet overcome the hypocotyl barrier, proteomic analysis of the leaf apoplast revealed activation of pathogen defence enzymes (β -1,3-glucanase, peroxidase, PR4, and endochitinase). This suggests systemic signalling of *V. longisporum* infection. A subset of the defence enzymes identified in leaf apoplast was also increased in xylem sap. Since orthologs of these enzymes in other plant species were regulated by ethylene, this phytohormone appears also to be involved in mediating *V. longisporum* responses in oilseed rape. The xylem sap of infected plants suppressed fungal proliferation compared with that of non infected plants suggesting that the activation of apoplastic defences contributes to limit fungal spreading.

Methods

Plant growth conditions and infection with *Verticillium longisporum*

Brassica napus var. *napus* (rapid-cycling rape provided by PH Williams, University of Wisconsin-Madison, Crucifer Genetics Cooperative) seeds were surface-sterilized for 15 min in a solution of 5% Ca hypochloride and 0.02% Triton X-100, washed in sterilized water, sown on root-

Table 3: Major proteins in apoplastic washing fluids of leaves of oilseed rape (*Brassica napus* var. *napus*).

Spot No	Similarity (Organism) Peptide	NCBI no. (ACC)	Protein score (Threshold)	MW	Target peptide
4	α-L-arabinofuranosidase (Ath) YVAIGNEDCGK AFVSEYAVTGK	gi 13937191 (At3g10740)	113 (56)	75437	S (RC 2)
5	α-L-arabinofuranosidase (Rs) GQETPGEDPLLSSK	gi 74355968 (BAE44362)	76	84750	M (RC 4)
7	α-L-arabinofuranosidase (Rs) GQETPGEDPLLSSK LPMTWYQSYVEK	gi 74355968 (BAE44362)	195 (56)	84750	M (RC 4)
9	HP (pectin esterase) (Br) TVQDAVNAAPDNNGVSK ISEGYEETVR DITFQNTAGPDAHQAVAFR	gi 72384433 (homolog of At5g09770)	84 (56)	60345	C (RC 1)
27	Chitinase (Class IV) (Bn) DLNEGDLLATPEK AVNSMECTGGGVPSETAANR	gi 14486393 (AAK62048)	103 (56)	31219	S (RC 4)
28	Chitinase (Class IV) (Bn) GAIQLSWNYNYGPCGR DLNEGDLLATPEK	gi 14486393 (AAK62048)	90 (56)	31219	S (RC 4)
38	UP (basic secretory protein) (Ath) WDQGYDVTAR	gi 15226060 (At2g15130)	81 (56)	25459	S (RC 1)
39	Germin (GER 3, GLP3) (Ath) NPDQVTENDFAFTGLGK	gi 1755154 (At5g20630)	56 (56)	22020	S (RC 1)
40	Germin (GER 3, GLP3) (Ath) NPDQVTENDFAFTGLGK	gi 1755154 (At5g20630)	98 (56)	22020	S (RC 1)
45	Germin (GER 3, GLP3) (Ath) NPDQVTENDFAFTGLGK	gi 1755154 (At5g20630)	73 (45)	22020	S (RC 1)

Spot numbers refer to spots in Figure 7. NCBI and accession number (ACC) of the proteins identified by comparing the peptide sequence with NCBI databank are indicated. HP = hypothetical protein, UP = unknown protein. Protein score, predicted molecular weight (MW) and predicted target peptide with reliability class (RC) are indicated. C = Chloroplast, M = Mitochondrion, S = Secretory pathway. Ath = *Arabidopsis thaliana*, Bj = *Brassica juncea*, Bn = *Brassica napus*, Br = *Brassica rapa*, Rs = *Raphanus sativus*

medium [46], stored for 3 days at 4°C and then transferred to 20°C, 60% relative humidity, and a light intensity of 200 $\mu\text{mol m}^{-2} \text{s}^{-1}$ photosynthetically active radiation with an 16 h light/8 h dark cycle. Two weeks old plants were removed and planted into a soil-sand mixture (1:1) after cutting root tips. The plants were inoculated by applying 2×10^6 spores of *V. longisporum* in sterile water directly to the roots. Control plants were treated in the same way and mock-inoculated with sterile water. The plants were regularly watered with tap water and fertilized weekly with 10 ml fertilizer solution (10 g Flory Basisdünger, Euflor, München, Germany and 2.2 g NH_4NO_3 in 1 l tap water).

Plant height growth was measured weekly. Harvested plants were separated into roots, stems and leaves for biomass determination. Aliquots of fresh plant tissue were stored frozen at -80°C and further aliquots were dried at 60°C.

Collection of apoplastic washing fluid and of xylem sap

Apoplastic washing fluids and xylem sap were extracted immediately after harvest. Leaves of five plants were pooled and used to prepare apoplastic washing fluid using the infiltration procedure of Polle et al. [47] with some modifications. Five biological replicates were pre-

pared per treatment. The leaves were detached and the midrib was removed. The leaves were briefly washed in distilled water, placed in infiltration solution (100 mM KCl, 0.01% Triton-X 100) and subjected to vacuum infiltration (-80 kPa, 5 min). Subsequently the atmospheric pressure was slowly restored. The leaves surface was quickly blotted between paper towels. The leaves were rolled and placed in centrifugation tubes with a perforated bottom. The tubes were inserted into larger centrifugation tubes over a reaction vial. The whole set-up was centrifuged at 900 g (8 min, 4°C, Rotana 96 R, Hettich, Tuttlingen, Germany) in a swing rotor. During centrifugation the infiltration solution was released from the leaves and collected in the reaction vial. The solution was weighed and stored at -20°C. The composition of the infiltration solution had been optimized by varying the KCl and Triton X-100 concentrations to obtain maximum protein with minimum contamination (see below). For proteome analysis five biological replicates per treatment were analysed.

Xylem sap was collected using a Scholander pressure chamber [48]. Plants were removed from the pots, the soil-sand mixture was carefully removed by washing in water and after covering the roots with aluminium foil, they were placed inside the pressure chamber. The stem

Table 4: Differentially expressed proteins in apoplastic washing fluids of leaves of oilseed rape (*Brassica napus* var. *napus*) after infection with *Verticillium longisporum* VL43.

Spot no	Similarity (Organism) Peptide	NCBI (ACC)	Protein score (threshold)	MW	Target peptide	Factor	P
21	basic glucanase (Bj) LYDPNQEVLSALR YISVGNEVQPSDPTSR GISGFPPSSGFTTPEFR	gi 86371164 (ABC94638)	223 (56)	30722	S (RC 1)	3.9	0.037
	β-1,3-glucanase (Ath) LASSQAEADTWVR GISGFPPSSGFTTPEF	gi 6735303 (At3g57240)	91 (56)	37632	S (RC 1)		
22	basic glucanase (Bj) IASSQAEADTWVR LYDPNQEVLSALR YISVGNEVQPSDPTSR GISGFPPSSGFTTPEFR NLFHALVDTVYAALEK GSNIDLLLDVNPDLQR LDYALFTSPSTVVNDGSNAYR	gi 86371164 (ABC94638)	405 (56)	30722	S (RC 1)	3.1	0.001
	β-1,3-glucanase (Ath) LASSQAEADTWVR GISGFPPSSGFTTPEFR TYVNNLIQTVK	gi 6735303 (At3g57240)	180 (56)	37632	S (RC 1)		
23	β-1,3-glucanase (Ath) LASSQAEADTWVR GISGFPPSSGFTTPEFR TYVNNLIQTVK GSNIELVLDVNPDLQR	gi 6735303 (At3g57240)	222 (56)	37632	S (RC 1)	4.8	0.049
30	not identified					5.8	0.007
32	not identified					8.3	0.000
34	basic endochitinase (CHB4) (Bn) DSFINAANTFPNFANSVTR AINGMECNGGNSGAVNAR	gi 584929 (Q06209)	95 (56)	29684	S (RC 1)	7.7	0.009
36	not identified					4.8	0.014
51	basic endochitinase (CHB4) (Bn) DSFINAANTFPNFANSVTR AINGMECNGGNSGAVNAR DYCGQLGVDPGPNLS	gi 584929 (Q06209)	159 (44)	29684	S (RC 1)	4.2	0.020
52	not identified					3.5	0.045
53	not identified					4.4	0.005
54	Korean horseradish peroxidase (Rs) MGDISPLTGSSGEIR	gi 1518388 (X91172)	94 (44)	33993	S (RC 3)	2.4	0.040
	Peroxidase (Ath) MGDISPLTGSSGEIR	gi 15239075 (At5g05340)	94 (44)	34650	S (RC 1)		
55	not identified					3.6	0.005

Data indicate means of 5 gels per treatment. Spot numbers refer to spots in Figure 7. NCBI and accession number (ACC) of the proteins were identified by comparing the peptide sequence with NCBI databank. Protein score, predicted molecular weight (MW) and predicted target peptide with reliability class (RC) are indicated. Factor indicates mean intensity of spots in apoplastic washing fluid of VL43-infected plants/mean intensity of spot in apoplastic washing fluid of control plants. P-values were calculated using ProteinWeaver software. Ath = *Arabidopsis thaliana*, Bj = *Brassica juncea*, Bn = *Brassica napus*, Rs = *Raphanus sativus*,

was cut above the hypocotyl and the cut surface was rinsed with ddH₂O. After closing the chamber, the roots were exposed to 0.2 MPa for 10 to 15 min. Xylem sap exuding through the cut surface was collected with a pipette tip. Sap of 15 plants per treatment was pooled as one biological replicate and stored at -20°C. For proteome analysis five biological replicates were analysed.

Fungal culture and growth test

Verticillium longisporum isolate VL43 (isolated from *Brassica napus*), was maintained on potato dextrose agar at 4°C. For sporulation, fungal hyphae were transferred to

250 ml liquid potato dextrose medium (PDB medium, Scharlau, Barcelona, Spain) with 0.2 mg/ml streptomycin sulphate (Sigma, Steinheim) as described by Fahleson et al. [49]. The culture was incubated at 22°C by horizontal shaking (80 rpm) for 14 d in darkness. For inoculation the fungal suspension was filtered and diluted to a suspension of 2 × 10⁶ conidia per millilitre.

To test fungal growth, xylem sap was collected as described above from 30 control and 30 infected plants, respectively and used for 13 growth assays in uninfected and 15 growth assays in infected saps, respectively. Fungal

Table 5: Differentially regulated proteins in xylem sap of oilseed rape (*Brassica napus* var. *napus*) after infection with *Verticillium longisporum* VL43.

Spot No	Similarity (Organism) Peptide	NCBI (ACC)	Protein score (Threshold)	MW	Target peptide
XVL 1	basic glucanase (Bj) IASSQAEADTWVR LYDPNQEVLSALR YISVGNEVQPSDPTSR GISGFPPSSGTFTPEFR NLFHALVDVYAALEK GSNIDLLLDVVPNDLQR LDYALFTSPSTVVNDGSNAYR	gi 118763538 (ABC94638)	510 (44)	30722	S (RC 1)
	β-1,3-glucanase (Ath) LASSQAEADTWVR GISGFPPSSGTFTPEFR TYVNNLIQTVK GSNIELVLDVVPNDLQR	gi 6735303 (At3g57240)	222 (45)	37632	S (RC 1)
XVL 2	not identified				
XVL 3	PR4-Typ protein (Br) VTNTGTQAQATVR QIDTDGQGYAR ATYHFYNPAQNGWDLR	gi 73671284 (AF528181)	162 (44)	15950	S (RC 2)

Spot numbers refer to Fig. 6. NCBI and accession number of the proteins identified by comparing the peptide sequence with NCBI databank are indicated. Protein score, predicted molecular weight (MW) and predicted target peptide with reliability class (RC) are indicated. Ath = *Arabidopsis thaliana*, Bj = *Brassica juncea*, Br = *Brassica rapa*

spore solution with 1.8×10^6 spores in PDB medium was centrifuged and resuspended in ddH₂O water. 10 µl of this spore solution were diluted 1:10 with sterile water, filled up with 900 µl xylem sap to a final volume of 1 ml and incubated in a sterile 2 ml reaction tube at 22°C by shaking (80 rpm) for 3 days in darkness. Subsequently, the suspension was centrifuged and the pellet was used for DNA extraction [50]. For this purpose, the pellet was milled (MM 2, Retsch, Haan, Germany), suspended in 400 µl extraction buffer (200 mM Tris-HCl, pH 7.5, 250 mM NaCl, 25 mM EDTA, 0.5% sodium dodecylsulfate), and centrifuged (20,000 g, 3 min, 5417 R Eppendorf centrifuge, Hamburg, Germany) after mixing. 300 µl of the supernatant was transferred to a new tube, mixed with 300 µl isopropanol and incubated for 2 min at room temperature. The sample was centrifuged (20,000 g, 5 min). The supernatant was discarded and the pellet was dried for 5 – 10 min at 37°C in a Speed Vac (Eppendorf Concentrator 5301, Hamburg, Germany). The pellet was resuspended in 100 µl TE buffer (10 mM Tris-HCl pH 7.5; 1 mM EDTA) used for fungal DNA determination was described below.

Quantification of *Verticillium longisporum* DNA by real-time PCR

Frozen hypocotyl was ground in liquid nitrogen to a fine powder. For DNA extraction from plant tissue the DNeasy Plant Mini Kit from Qiagen (Hilden, Germany) was used. The amount of fungal DNA was determined by real-time

PCR with primers 5'-cagcgaacgcgatatgtag-3' and 5'-ggctt-gtagggggttaga-3', which are specific for *Verticillium* spp [1]. BIOTaq DNA polymerase (Bioline, Luckenwalde, Germany) in standard polymerase buffer with 0.01% (v/v) Tween-20 and 3 mM MgCl₂ was used, 10 nM fluorescein (BioRad, Hercules, CA, USA) was added as internal fluorescence standard and the fluorescence of SYBR Green I (100,000-times diluted solution purchased from Invitrogen, Karlsruhe, Germany) was recorded using 490 ± 10 nm for excitation and 530 ± 15 nm for emission. PCR consisted of a 2 min denaturation step at 94°C followed by 36 cycles of 20 s at 94°C, 30 s at 59°C and 40 s at 72°C. The amount of *V. longisporum* DNA was estimated from a calibration curve constructed with purified fungal DNA dissolved in plant matrix.

Photosynthesis and Chlorophyll fluorescence

Chlorophyll fluorescence was measured on dark-adapted leaves using the Mini PAM system (Walz, Effeltrich, Germany). The quantum yield of photochemistry was calculated as described by Maxwell and Johnson [51]:

$$\Phi = (F_m - F_o) / F_m'$$

with F_m and F_o referring to maximum and background fluorescence, respectively, in darkness.

Photosynthesis and transpiration were measured in gas exchange system (HCM 1000, Walz, Effeltrich, Germany) at saturating light of 800 µmol m⁻²s⁻¹ of photosynthetic active radiation (20°C, 60% air humidity).

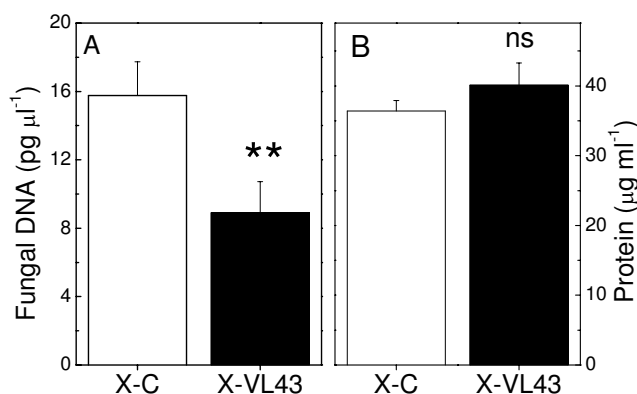


Figure 8
Fungal growth (A) and protein content (B) in xylem sap of non-infected (X-C) and VL43-infected (X-VL43) oilseed rape (*Brassica napus* var. *napus*). Data indicate means (n = 13 for non-infected and 15 for infected xylem sap, ± SE). ** indicate significant differences between treated and non-treated plants at P ≤ 0.01, ns = not significant.

Chlorophyll concentration

Frozen leaf material was milled in liquid nitrogen and extracted in 80% acetone. After centrifugation the pigment concentration of the supernatant was determined spectrophotometrically (Beckman DU 640, Beckman Coulter, Krefeld, Germany) at 646 nm and 663 nm. The chlorophyll concentration was determined as sum of chlorophyll a and b after Lichtenthaler and Wellburn [52].

Nutrient elements

Dry leaf material was milled to a fine powder (MM2 Retsch, Haan Germany). Aliquots of the powder were extracted with 65% HNO₃ [53] and subjected to inductively-coupled optical emission spectroscopy (Spectroflame, Spectro Analytical Instruments, Kleve Germany). For carbon and nitrogen determination, leaf powder was weighed into tin capsules and measured in a CNS-elemental analyser (Carlo Erba Instruments, Rodano, Italy).

Electrolyte leakage

Leaf disks (10 mm) were excised from leaf blades avoiding major veins. 25 disks were immersed in 20 ml of distilled water. The conductivity (C) was determined immediately (C₀) and after 24 h (C₂₄) with a conductivity meter (LF315/SET, WTW Wissenschaftliche Technik, Weilheim, Germany). The samples were autoclaved (5 min, 121 °C) to destroy the tissues and measured after cooling to room temperature (C_{maximum}). Relative electrolyte leakage (REL) was calculated as

$$\text{REL (\%)} = [(C_t - C_0) / C_{\text{max}}] * 100$$

Contamination measurements

To determine contamination of apoplastic fluids with cellular components, malate dehydrogenase activity was determined as symplastic marker enzyme [54]. The enzyme activity was measured spectrophotometrically at 340 nm as the consumption of NADH with oxalacetate as substrate. Malate dehydrogenase activity was also measured in leaf extracts prepared as described previously [47]. Crude extracts were filtered over Sephadex G-25 (NAP5, Amersham Biosciences, Uppsala, Sweden) before enzyme determination.

Preparation of protein extracts for gel electrophoresis

Xylem sap was filtered, (0.2 µm pore size, Sarstedt, Nümbrecht, Germany) freeze-dried, dissolved in 500 µl ddH₂O (double deionised water) and filtered over a Sephadex G-25 column.

Apoplastic washing fluids and whole leaf extracts were subjected to acetone/trichloroacetic acid (TCA) precipitation (5 volumes 10% w/v TCA, 0.14% v/v 2-mercaptoethanol in acetone with 1 volume of plant extract) overnight at -20 °C. Subsequently, the samples were centrifuged (20000 g, 4 °C, 20 min). The supernatant was discarded. The pellet was washed three times with 200 µl acetone containing 0.07% 2-mercaptoethanol and dried. The pellet was dissolved in 380 µl rehydration buffer (8 M urea containing 0.5% w/v CHAPS (3-[(3-cholamidopropyl)dimethylammonio]-1-propanesulfonate), 15 mM DTT (DL-dithiothreitol), 0.2% v/v IPG Buffer pH 3–10 (Amersham Bioscience, Freiburg, Germany) and 0.2% v/v Bromphenol Blue [55] and shaken for 30 min at room temperature to dissolve proteins. The extract was centrifuged for 5 min (12000 g, 4 °C) and the supernatant was used for protein separation on 2-D gels.

For 1-D gels protein pellets obtained by TCA/acetone precipitation were dissolved in ddH₂O water. For gel electrophoretic separation 5 µl loading buffer (4% w/v SDS, 20% v/v glycerol, 0.2 M DTT, 0.002% w/v Bromphenol Blue in 0.5 M Tris-HCl, pH 6.8) was added. Before application to gels samples were incubated for 3 min at 70 °C.

The protein concentration of the extracts was quantified by the bicinchoninic acid (BCA) method using the BCA protein quantification kit (Uptima, Montlucon, France) and bovine serum albumin as the standard.

Separation of proteins by 1-D or 2-D gel electrophoresis

Proteins were separated by sodium dodecyl sulphate (SDS) – polyacrylamide gel electrophoresis (PAGE, [56]) in a gradient from 7.5 to 20% (electrophoresis unit, Bio-rad, München, Germany). Each lane was loaded with 1.8 µg protein (for silver staining) or 50 to 100 µg protein (for

Coomassie staining). Molecular weight markers were used from Amersham (LMW 17-0446-01, Amersham Biosciences, Freiburg, Germany).

For 2-D electrophoresis, 80 µg protein in 350 µl rehydration buffer was used for isoelectric focusing on immobilized pH gradient strips (Immobiline DryStrip, pH 3–10, length 18 cm, Amersham Bioscience, Freiburg, Germany). Isoelectric focusing (IPGphor isoelectric focusing system, Amersham Bioscience, Freiburg, Germany) was performed under the following conditions: rehydration 12 h at 20 V, followed by 2 h at 150 V, 1 h at 200 V, 1 h at 500 V, 1.000 Vh at 1.000 V, and finally by 60.000 Vh at 80.00 V. The focused samples were stored at -20 °C.

Prior to the second separation step, IEF focusing strips were incubated two times for 15 min in equilibration buffer (6 M urea, 30% w/v glycerol, 2% w/v SDS in 0.05 M Tris-HCl buffer pH 8.8) after Görg and Weis [55] containing 1% DTT in the first equilibration step and 4% iodoacetamide in the second one. In the second dimension proteins were separated on 12% SDS-PAGE [56] using an EttanDalt-six electrophoresis unit (Amersham Biosciences, Freiburg, Germany) operating at 600 V (400 mA, 13 W) for 30 min and followed by 3000 V (400 mA, 100 W) for 4.5 h.

Gels were stained with colloidal Coomassie Blue [57] or with silver [58] and scanned with a FluorS-Multimager (Biorad, München, Germany).

Protein identification

Protein spots of interest were cut and digested in-gel after Havlis et al. [59]. Gel pieces were washed twice with ddH₂O for 15 min and washed once with 50% methanol (15 min) at room temperature. The gel pieces were dehydrated in pure acetonitrile for 20 min and solvent was removed under vacuum. Gel pieces were soaked for 60 min in a solution of 2 µM modified trypsin (Promega, Mannheim, Germany) in 50 mM ammonium bicarbonate buffer pH 8 at 4 °C. Trypsin solution not taken up by gel pieces was removed. The digestion was carried out for 30 min at 58 °C and stopped by addition of 200 µl 5% (v/v) formic acid. Peptides were extracted for 300 min at room temperature on a shaker and extraction was repeated with 200 µl 50% (v/v) acetonitrile in 5% (v/v) formic acid. Combined supernatants were dried in a vacuum centrifuge (SPD SpeedVac, Thermo Savant, Holbrook, USA). Peptides were dissolved in 5 µl of 0.1% formic acid and 4 µl samples were used for separation on 180 µm capillary column packed with 218MS-C18 phase (Vydac, Columbia, USA) and analysed by ESI-LC-MS (HP 1100 Agilent, Palo Alto, USA; Esquire 3000, Bruker Daltonik, Bremen, Germany). Mass spectra were analysed by Data Analysis

software (Bruker Daltonik, Bremen, Germany) and proteins identified by online searching of MSDB, NCBItr and EST databases using Mascot software (Matrix Science, Boston, USA). Settings for peptide searches were: ion charge 2+ and 3+, monoisotopic ions, carbamidomethyl-C as fixed modification, oxidation-M as variable modification, missed cleavage 1, peptide tolerance 1.4 Da, MS/MS tolerance 0.4 Da, standard scoring using significance threshold $p < 0.05$. To obtain information whether the identified proteins contained a target sequence for the secretory pathway, the programme TargetP (version 1.1) was used, which predicts the subcellular localisation of eukaryotic proteins [60]. TargetP also indicates reliability classes (1 to 5) of the predicted localisation. Small values indicate high reliability.

Statistical analysis

To compare gels from *Verticillium*-treated and non-inoculated plants five gels, each loaded with one biological replicate per treatment were run and silver stained. The gels were scanned and stored as TIFF-files. Gels belonging to one treatment were analysed as a group by Proteomweaver software (Version 3.1.07, Definitions Cognitionware, München, Germany). Protein spots were identified automatically, adjusted manually where necessary and merged by Pair Matching or Multi Matching. The grouped gels were normalized using standard settings of the programme and compared. Protein intensities of matching spots were statistically analysed by Student's T-test to identify significant differences at $P \leq 0.05$.

Genevestigator analysis was conducted with the software developed by Zimmermann et al. [61].

Biometric and physiological data are shown as means (\pm SE). The number of replicates is indicated in the figure legends. For statistical analysis ANOVA or Student's T-test were applied using Statgraphics (Centurion XV, St Louis, MO, USA).

Authors' contributions

SF conducted rape infection experiments, extracted and analysed the proteome. CD conducted *Verticillium* growth experiments in xylem sap. AM and UK made the LC-MS/MS available and helped with protein separation and identification. PK contributed data on *Verticillium* DNA. AP suggested experiments and wrote the manuscript. All authors have read and approved the manuscript.

Acknowledgements

We are grateful to A. von Tiedemann for the donation of the VL43-strain of *Verticillium longisporum* and to Monika Franke-Klein and Christine Kettner for excellent technical assistance. We thank the DFG for providing financial support (Po362/15-1/2) via FOR 546.

References

- Eynck C, Koopmann B, Grunewaldt-Stoecker G, Karlovsky P, von Tiedemann A: **Differential interactions of *Verticillium longisporum* and *V. dahliae* with *Brassica napus* detected with molecular and histological techniques.** *Eur J Plant Pathol* 2007, **118**:259-274.
- Kehr J, Buhtz A, Giavalisco P: **Analysis of xylem sap proteins from *Brassica napus*.** *BMC Plant Biol* 2005, **5**:11.
- Buhtz A, Kolasa A, Arlt K, Walz C, Kehr J: **Xylem sap protein composition is conserved among different plant species.** *Planta* 2004, **219**:610-618.
- Rep M, Dekker HL, Vossen JH, de Boer AD, Houterman PM, Speijer D, Back JW, de Koster CG, Cornelissen BJC: **Mass spectrometric identification of isoforms of PR proteins in xylem sap of fungus-infected tomato.** *Plant Physiol* 2002, **130**:904-917.
- Young SA, Guo A, Guikema JA, White FF, Leach JE: **Rice cationic peroxidase accumulates in xylem vessels during incompatible interactions with *Xanthomonas oryzae* pv *oryzae*.** *Plant Physiol* 1995, **107**:1333-1341.
- Joosten MAHJ, De Wit PJGM: **Identification of several pathogenesis-related proteins in tomato leaves inoculated with *Cladosporium fulvum* (syn. *Fulvia fulva*) as 1,3- β -glucanases and chitinases.** *Plant Physiol* 1989, **89**:945-951.
- Segarra CI, Casaloung CA, Pinedo ML, Ronchi VP, Conde RD: **A germin-like protein of wheat leaf apoplast inhibits serine proteases.** *J Exp Bot* 2003, **54**:1335-1341.
- Burg HA Van den, Harrison SJ, Joosten MAHJ, Vervoort J, de Witt PJGM: ***Cladosporium fulvum* Avr4 protects fungal cell walls against hydrolysis by plant chitinases accumulation during infection.** *Mol Plant Microbe Interac* 2006, **19**:1420-1430.
- Ndimba BK, Chivasa S, Hamilton JM, Simon WJ, Slabas AR: **Proteomic analysis of changes in the extracellular matrix of *Arabidopsis* cell suspension cultures induced by fungal elicitors.** *Proteomics* 2003, **3**:1047-1059.
- Smolka MB, Martins D, Winck FV, Santoro CE, Castellari RR, Ferrari F, Brum I Jr, Galembeck E, Della Coletta Filho H, Machado MA, Marangoni S, Novello JC: **Proteome analysis of the plant pathogen *Xylella fastidiosa* reveals major cellular and extracellular proteins and a peculiar codon bias distribution.** *Proteomics* 2003, **3**:224-237.
- Gau AE, Koutb M, Piotrowski M, Klappsteh K: **Accumulation of pathogenesis-related proteins in the apoplast of a susceptible cultivar of apple (*Malus domestica* cv. Elstar) after infection by *Venturia inaequalis* and constitutive expression of PR genes in the resistant cultivar Remo.** *Eur J Plant Pathol* 2004, **110**:703-711.
- Chivasa S, Simon WJ, Yu X-L, Yalpani N, Slabas AR: **Pathogen elicitor-induced changes in the maize extracellular matrix proteome.** *Proteomics* 2005, **5**:4894-4904.
- Houterman PM, Speijer D, Dekker HL, De Koster CG, Cornelissen BJC, Rep M: **The mixed xylem sap proteome of *Fusarium oxysporum*-infected tomato plants.** *Mol Plant Pathol* 2007, **8**:215-221.
- Kaffarnik FAR, Jones AME, Rathjen JP, Peck SC: **Effector proteins of the bacterial pathogen *Pseudomonas syringae* alter the extracellular proteome of the host plant, *Arabidopsis thaliana*.** *Mol Cell Proteomics* 2008.
- Bolton MD, van Esse HP, Vossen JH, de Jonge R, Stergiopoulos I, Stulemeijer IJE, Berg GCM van den, Borrás-Hidalgo O, Dekker HL, de Koster CG, de Wit PJGM: .
- Joosten MAHJ, Thomma BPHJ: **The novel *Cladosporium fulvum* lysin motif effector Ecp6 is a virulence factor with orthologues in other fungal species.** *Mol Microbiol* 2008, **69**:119-136.
- Daebeler F, Amelung D, Zeise K: ***Verticillium Welke* an Winter-raps – Auftreten und Bedeutung.** *Nachrichtenblatt Pflanzenschutzdienst DDR* 1988, **42**:71-73.
- Fradin EF, Thomma BPHJ: **Physiology and molecular aspects of *Verticillium* wilt diseases caused by *V. dahliae* and *V. albo-atrum*.** *Mol Plant Pathol* 2006, **7**:71-86.
- Benhamou N: **Immunocytochemistry of plant defense mechanisms induced upon microbial attack.** *Microsc Res Tech* 1995, **31**:63-78.
- Gold J, Robb J: **The role of the coating response in *Craigella* tomatoes infected with *Verticillium dahliae*, race-I and race-2.** *Physiol Mol Plant Pathol* 1995, **47**:141-157.
- Williams JS, Hall SA, Hawkesford MJ, Beale MH, Cooper RM: **Elemental sulfur and thiol accumulation in tomato and defense against a fungal vascular pathogen.** *Plant Physiol* 2002, **128**:150-159.
- Johansson A, Staal J, Dixelius C: **Early responses in the *Arabidopsis-Verticillium longisporum* pathosystem are dependent on NDR1, JA- and ET-associated signals via cytosolic NPR1 and RFO1.** *Mol Plant Microbe Interac* 2006, **19**:958-969.
- Kotake T, Tsuchiya K, Aohara T, Konishi T, Kaneko S, Igarashi K, Samejima M, Tsumuraya Y: **An α -L-arabinofuranosidase/ β -D-xylosidase from immature seeds of radish (*Raphanus sativus* L.).** *J Exp Bot* 2006, **57**:2353-2362.
- Bowden RL, Rouse DI, Sharkey TD: **Mechanism of photosynthesis decrease by *Verticillium dahliae* in potato.** *Plant Physiol* 1990, **94**:1048-1055.
- Saeed IAM, MacGuidwin AE, Rouse DI, Sharkey TD: **Limitation to photosynthesis in *Pratylenchus penetrans* – and *Verticillium dahliae*-infected potato.** *Crop Sci* 1999, **39**:1340-1346.
- Sadras VO, Quiroz F, Echarte L, Escande A, Pereyra VR: **Effect of *Verticillium dahliae* on photosynthesis, leaf expansion and senescence of field-grown sunflower.** *Ann Bot* 2000, **86**:1007-1015.
- Flörl S: **Identifizierung und Charakterisierung extrazellulärer Proteine unter dem Einfluss von *Verticillium longisporum* in *Arabidopsis thaliana* und Raps (*Brassica napus*).** In Thesis University of Göttingen; 2007.
- Veronese P, Narasimhan ML, Stevenson RA, Zhu JK, Weller SC, Subbarao KV, Bressan RA: **Identification of a locus controlling *Verticillium* disease symptom response in *Arabidopsis thaliana*.** *Plant J* 2003, **35**:574-587.
- Walker JC, Gallegly ME, Bloom JR, Scheffer RP: **Relation of plant nutrition to disease development. *Verticillium* wilt of tomato.** *Am J Bot* 1954, **41**:760-762.
- Sivaprakasam K, Rajagopa CK: **Effect of nitrogen on incidence of *Verticillium* wilt disease of egg plant caused by *Verticillium dahliae* Kleb.** *Plant and Soil* 1974, **40**:217-220.
- Karagiannidis N, Bletsos F, Stavropoulos N: **Effect of *Verticillium* wilt (*Verticillium dahliae* Kleb.) and mycorrhiza (*Glomus mosseae*) on root colonization, growth and nutrient uptake in tomato and eggplant seedlings.** *Sci Hort* 2002, **94**:145-156.
- Bayer EM, Bottrill AR, Walshaw J, Vigouroux M, Naldrett MJ, Thomas CL, Maule AJ: ***Arabidopsis* cell wall proteome defined using multidimensional protein identification technology.** *Proteomics* 2006, **6**:301-311.
- Boudart G, Jamet E, Rossignol M, Lafitte C, Borderies G, Jauneau A, Esquerre-Tugay MT, Pont-Lezica R: **Cell wall proteins in apoplastic fluids of *Arabidopsis thaliana* rosettes: Identification by mass spectrometry and bioinformatics.** *Proteomics* 2005, **5**:212-221.
- Slabas AR, Ndimba B, Simon WJ, Chivasa S: **Proteomic analysis of the *Arabidopsis* cell wall reveals unexpected proteins with new cellular locations.** *Biochem Soc Transac* 2004, **32**:524-528.
- Charmont S, Jamet E, Pont-Lezica R, Canut H: **Proteomic analysis of secreted proteins from *Arabidopsis thaliana* seedlings: improved recovery following removal of phenolic compounds.** *Phytochem* 2005, **66**:453-461.
- Saha BC: **α -L-arabinofuranosidases: biochemistry, molecular biology and application in biotechnology.** *Biotechnol Adv* 2000, **18**:403-423.
- Doxey AC, Yaish MWF, Moffatt BA, Griffith M, McConkey BJ: **Functional divergence in the *Arabidopsis* β -1,3-glucanase gene family inferred by phylogenetic reconstruction of expression states.** *Mol Biol Evol* 2007, **24**:1045-1055.
- McFadden HG, Chapple R, de Feyter R, Dennis E: **Expression of pathogenesis-related genes in cotton stems in response to infection by *Verticillium dahliae*.** *Physiol Mol Plant Pathol* 2001, **58**:119-131.
- Dubery IA, Slater V: **Induced defence responses in cotton leaf disks by elicitors from *Verticillium dahliae*.** *Phytochem* 1997, **44**:1429-1434.
- Park Y-S, Jeon MH, Lee S-H, Moon JS, Cha J-S, Kim HY, Cho T-J: **Activation of defense responses in chinese cabbage by a nonhost pathogen, *Pseudomonas syringae* pv. tomato.** *J Biochem Mol Biol* 2005, **38**:748-754.
- Ryang S-H, Chung S-Y, Lee S-H, Cha J-S, Kim HY, Cho T-J: **Isolation of pathogen-induced chinese cabbage genes by subtractive**

- hybridization employing selective adaptor ligation. *Biochem Biophys Res Comm* 2002, **299**:352-359.
42. Park Y-S, Cho T-J: **Isolation and characterization of methyl jasmonate-inducible genes in chinese cabbage.** *Kor J Biol Sci* 2003, **7**:337-343.
 43. Broglie KE, Gaynor JJ, Broglie RM: **Ethylene-regulated gene expression: molecular cloning of the genes encoding an endochitinase from *Phaseolus vulgaris*.** *Proc Natl Acad Sci USA* 1986, **83**:6820-6824.
 44. Mauch F, Staehelin LA: **Functional implications of the subcellular localization of ethylene-induced chitinase and β -1,3-glucanase in bean leaves.** *Plant Cell* 1989, **1**:447-457.
 45. Petruzzelli L, Kunz C, Waldvogel R, Meins F Jr, Leubner-Metzger G: **Distinct ethylene- and tissue-specific regulation of β -1,3-glucanases and chitinases during pea seed germination.** *Planta* 1999, **209**:195-201.
 46. Murashige T, Skoog F: **A revised medium for rapid growth and bio assays with tobacco tissue cultures.** *Physiol Plant* 1962, **15**:473-497.
 47. Polle A, Chakrabarti K, Schurmann W, Rennenberg H: **Composition and properties of hydrogen peroxide decomposing systems in extracellular and total extracts from needles of Norway spruce (*Picea abies* L, Karst).** *Plant Physiol* 1990, **94**:312-319.
 48. Scholander PF, Hammel HT, Bradstre ED, Hemmings EA: **Sap pressure in vascular plants – Negative hydrostatic pressure can be measured in plants.** *Science* 1965, **148**:339-346.
 49. Fahlson J, Lagercrantz U, Hu Q, Steventon LA, Dixelius C: **Estimation of genetic variation among *Verticillium* isolates using AFLP analysis.** *Eur J Plant Pathol* 2003, **109**:361-371.
 50. Schneidereit A: **Untersuchungen zur transkriptionellen Regulation des *AtSUC2*-Promotors beim Sink-Source-Übergang im Blatt und Analyse der Gene *AtINT2* und *AtINT4*.** In Thesis University of Erlangen-Nürnberg; 2005.
 51. Maxwell K, Johnson GN: **Chlorophyll fluorescence – a practical guide.** *J Exp Bot* 2000, **51**:659-668.
 52. Lichtenthaler HK, Wellburn AR: **Determinations of total carotenoids and chlorophylls a and b of leaf extracts in different solvents.** *Biochem Soc Trans* 1983, **11**:591-592.
 53. Heinrichs H, Brumsack HJ, Loftfield N, König N: **Verbessertes Druckaufschlußsystem für biologische und anorganische Materialien.** *Zeitschr Pflanzenernähr Bodenk* 1986, **149**:350-353.
 54. Bergmeyer HU, Rozalskis G: **K_m of malate dehydrogenase from pig heart with oxaloacetate as substrate.** *Zeitschrift für klinische Chemie und klinische Biochemie* 1975, **13**:509.
 55. Görg A, Weiss W: **Two-dimensional electrophoresis with immobilized pH gradients.** In *Proteome research: Two-dimensional gel electrophoresis and identification methods* Edited by: Rabilloud J. Berlin Heidelberg: Springer Verlag; 2000:57-106.
 56. Laemmli UK: **Cleavage of structural proteins during the assembly of the head of bacteriophage T4.** *Nature* 1970, **227**:680-685.
 57. Neuhoff V: **Colloid Coomassie Blue staining of proteins and peptides in polyacrylamide gels.** *Biol Chem Hoppe-Seyler* 1990, **371**:A10-A11.
 58. Blum H, Beier H, Gross HJ: **Improved silver staining of plant-proteins, RNA and DNA in polyacrylamide gels.** *Electrophoresis* 1987, **8**:93-99.
 59. Havlis J, Thomas H, Sebela M, Shevchenko A: **Fast-response proteomics by accelerated in-gel digestion of proteins.** *Anal Chem* 2003, **75**:1300-1306.
 60. Emanuelsson O, Nielsen H, Brunak S, von Heijne G: **Predicting subcellular localization of proteins based on their N-terminal amino acid sequence.** *J Mol Biol* 2000, **300**:1005-1016.
 61. Zimmermann P, Hirsch-Hoffmann M, Hennig L, Gruissem W: **GENEVESTIGATOR. *Arabidopsis* microarray database and analysis toolbox.** *Plant Physiol* 2004, **136**:2621-2632.

Publish with **BioMed Central** and every scientist can read your work free of charge

"BioMed Central will be the most significant development for disseminating the results of biomedical research in our lifetime."

Sir Paul Nurse, Cancer Research UK

Your research papers will be:

- available free of charge to the entire biomedical community
- peer reviewed and published immediately upon acceptance
- cited in PubMed and archived on PubMed Central
- yours — you keep the copyright

Submit your manuscript here:
http://www.biomedcentral.com/info/publishing_adv.asp

