

Additional file 9:

Peptide competition assay

In order to further investigate the specificity of the GPNMB antibody (sc-47006, Santa Cruz), an immunoadsorption experiment was carried out using the respective blocking peptide (sc-47006P). 1 μ g GPNMB peptide was incubated with the antibody (1:200) in phosphate-buffered saline (PBS) for 5 h at room temperature with continuous agitation and followed by centrifugation at 14.000 x g for 5 min as published previously. The supernatant was used for immunohistochemistry as described in the Material and Methods part.

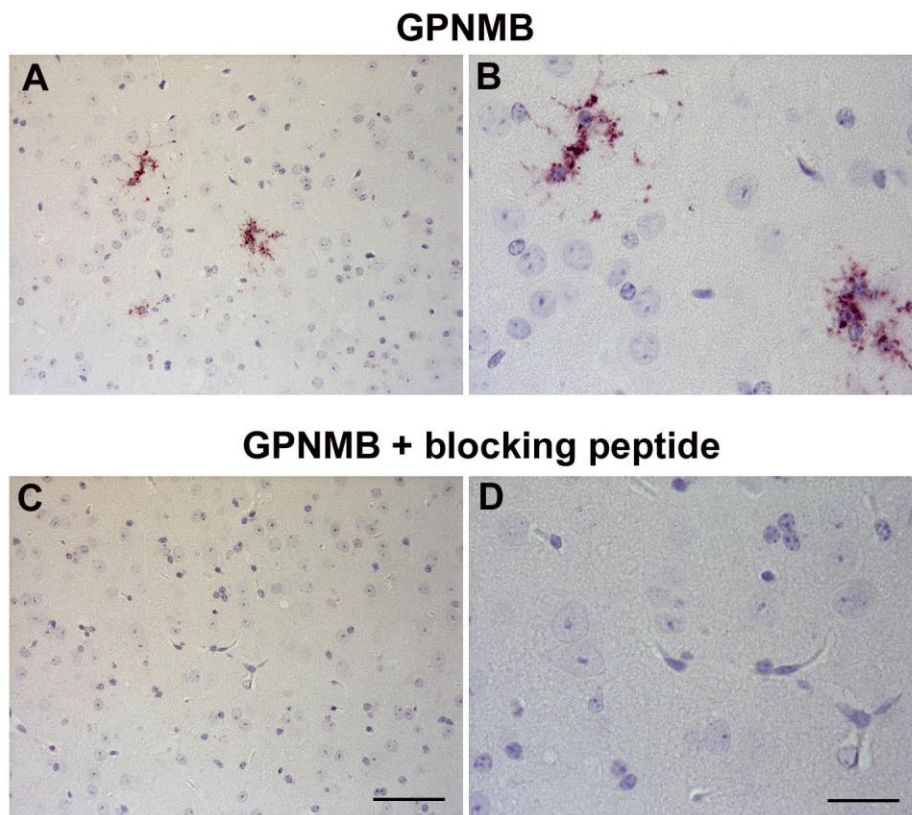


Figure S3: The use of 1 μ g blocking peptide completely abolished GPNMB immunoreactivity in a human AD case. Scale bar: A,C = 50 μ m; B,D = 20 μ m