

Supplementary Information (SI)

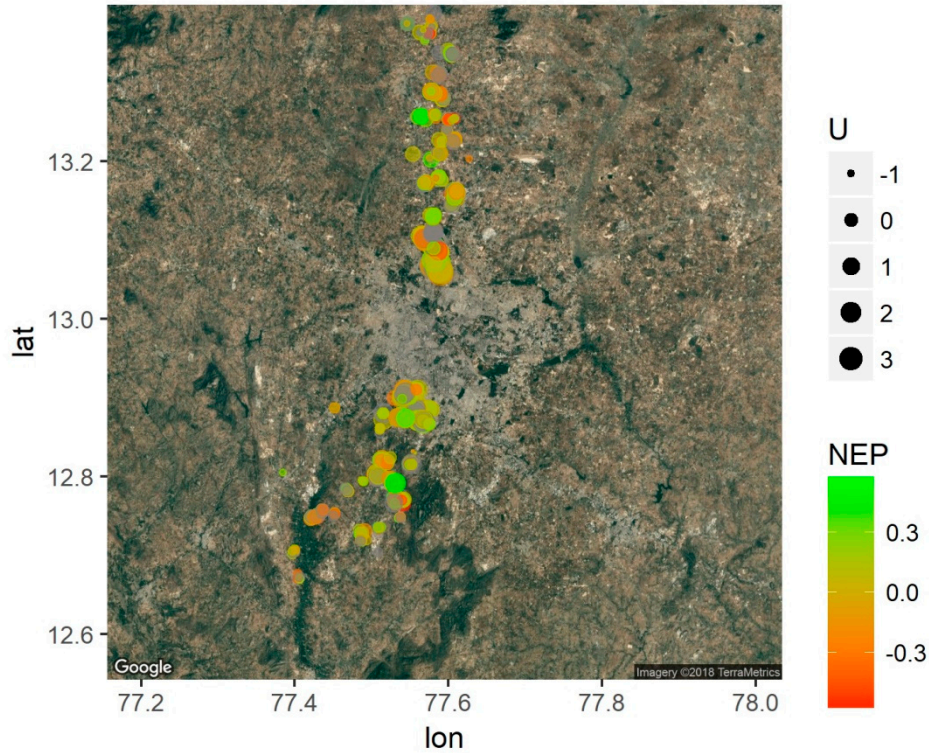
## Environmental Concern, Income, and Nature Experience in India

Johannes Bettin, Meike Wollni

**Table SI:** Questionnaire.

New Environmental Paradigm	<p><i>How much do you agree with the following statements: (1) Strongly disagree, (2) Somewhat disagree, (3) Indifferent, (4) Somewhat agree, (5) Strongly agree, (6) No answer</i></p> <p><i>Eco-Crisis: Humans are severely abusing the environment.</i></p> <p><i>Balance of Nature: When humans interfere with nature it often produces disastrous consequences.</i></p> <p><i>(Limits to Growth: Humans are becoming too many.)</i></p> <p><i>(Anti-Anthropocentrism: Humans are allowed to change the natural environment so their life becomes more comfortable.)</i></p>
<p><i>When you were young (in the past year for current farming), how often did you (1) At least once a day, (2) At least every second day, (3) At least once a week, (4) At least every second week, (5) At least once a month, (6) At least every second month, (7) At least every 6 months, (8) At least once a year, (9) Never.</i></p>	
Religious nature experience	felt at unity with nature around me
Recreational nature experience	went swimming in a river or lake
Aesthetic nature experience	spent time simply watching animals and plants
Educational nature experience	talked to family or friends about environmental destruction and / or protection
Farming (past and current)	took care of animals and plants
<p><i>Now, please indicate if these statements describe yourself well. (1) Strongly disagree, (2) Somewhat disagree, (3) Indifferent, (4) Somewhat agree, (5) Strongly agree, (6) No answer</i></p>	
Nature connection	I enjoyed contact with nature overall when I was young.
Agreeableness	I am sympathetic, warm.
Intraversion	I am sometimes reserved, quiet.
Openness	I am conventional, uncreative (inverted).
Conscientiousness	I tend to be disorganized, careless (inverted).
Neuroticism	I am calm and emotionally stable (inverted).
Knowledge	I understand causes and consequences of climate change well.
Abstraction	Series of numeric literacy questions (Lusardi & Mitchel, 2008)
Social Value Orientation	Series of decomposed social dilemma games (Murphy & Ackermann, 2012)
Time preference	Series of discount decision games (Coller & Williams, 1999)
Education	Years (weighted by highest formal degree obtained)
Assets	Count number of assets owned from list (Land, electricity, ceiling fan, gas stove, 2-wheeler, colour TV, refrigerator, washing machine, car, AC)

Note: See section 3.2 of main paper for sources of scales with no reference cited here. Caste, Age and Gender manifest



**Figure S12:** Sample. Distribution of environmental concern by location in rural-urban transects of representative survey conducted in Bangalore / India between November 2016 and May 2017. Interviews were conducted face-to-face in family homes, in local language and assisted by CAPI software. Households were sampled from 61 ward- / village lists proportional to population size. Transects reached out about 40km from the city center toward both North and South (see main text for further details). Participation in the survey was entirely voluntary, and all subjects gave their informed and written consent for inclusion before they participated in the survey (exemplary written consent form available upon request). Our institution does not normally require approval of this type of survey by the ethical commission.

## References

1. Coller, M.; Williams, M.B. Eliciting individual discount rates. *Exp. Econ.* **1999**, *2*, 107–127, DOI: 10.1007/BF01673482.
2. Lusardi, A.; Mitchell, O.S. Planning and financial literacy: How do women fare? *The American Econ. Rev.* **2008**, *98*, 413–417.
3. Murphy, R.O.; Ackermann, K.A.; Handgraaf, M. Measuring Social Value Orientation. *SSRN J.* **2011**, DOI: 10.2139/ssrn.1804189.



© 2019 by the authors. Submitted for possible open access publication under the terms and conditions of the Creative Commons Attribution (CC BY) license (<http://creativecommons.org/licenses/by/4.0/>).