

Original Article

Cite this article: Moeck IS, Dussel M, Weber J, Schintgen T, and Wolfgramm M. Geothermal play typing in Germany, case study Molasse Basin: a modern concept to categorise geothermal resources related to crustal permeability. *Netherlands Journal of Geosciences*, Volume 98, e14. <https://doi.org/10.1017/njg.2019.12>

Received: 27 May 2019

Revised: 15 August 2019

Accepted: 30 October 2019

Keywords:


geothermal resources assessment; permeability porosity ratio; transmissivity of carbonate rock; geothermal installations in Germany; play type terminology

Author for correspondence:

Inga S. Moeck,

Email: inga.moeck@leibniz-liag.de

Geothermal play typing in Germany, case study Molasse Basin: a modern concept to categorise geothermal resources related to crustal permeability

Inga S. Moeck^{1,2} , Michael Dussel¹, Josef Weber¹, Tom Schintgen¹ and Markus Wolfgramm³

¹Leibniz Institute for Applied Geophysics (LIAG), Stilleweg 2, D-30655 Hannover, Germany; ²Georg-August Universität Göttingen, Faculty of Geosciences and Geography, Applied Geothermics and Geohydraulics, Goldschmidtstr. 3, D-37077 Göttingen and ³Geothermie Neubrandenburg GmbH, Seestraße 7A, D-17033 Neubrandenburg, Germany

Abstract

The majority of running geothermal plants worldwide are located in geological settings with convection- or advection-dominant heat transport. In Germany as in most regions in Europe, conduction is the dominating heat transport mechanism, with a resulting average geothermal gradient. The geothermal play type concept is a modern methodology to group geothermal resources according to their geological setting, and characteristic heat transport mechanisms. In particular, the quantity of heat transport is related to fluid flow in natural or engineered geothermal reservoirs. Hence, the permeability structure is a key element for geothermal play typing. Following the existing geothermal play type catalogue, four major geothermal play types can be identified for Germany: intracratonic basins, foreland basins and basement/crystalline rock provinces as conduction-dominated play types, and extensional terrains as the convection-dominated play type. The installed capacity of geothermal facilities sums up to 397.1 MW_{th} by the end of 2018. District heating plants accounted for the largest portion, with about 337.0 MW_{th}. The majority of these installations are located in the play type 'foreland basin', namely the Molasse Basin in southern Germany. The stratigraphic unit for geothermal use is the Upper Jurassic, also known as 'Malm' formation, a carbonate reservoir with high variability in porosity and permeability. Recently drilled wells in the southernmost Molasse Basin indicate the Upper Jurassic as a tight, fracture-controlled reservoir, not usable for conventional hydrothermal well doublets. Our new data compilation including the recently drilled deep geothermal well Geretsried reveals the relation of porosity and permeability to depth. The results suggest that obviously diagenetic processes control permeability with depth in carbonate rock, diminishing the predictability of reservoir porosity and permeability. The play type concept helps to delineate these property variations in play type levels because it is based on geological constraints, common for exploration geology. Following the general idea of play typing, the results from this play analysis can be transferred to geological analogues as carbonate rock play levels in varying depth.

Introduction

The play type concept is relatively new in geothermal exploration and aims to cluster geothermal resources into groups, which share similar geological conditions (Moeck, 2014). The term 'play' is much older and appeared for the first time in publications in the 1930s, with the description of petroleum geology as a new specific discipline in hydrocarbon exploration (Lahee, 1933). In the 1960s, the play concept evolved into a practical approach by the developing petroleum industry for the assessment of hydrocarbon resources, although the term 'play' was never clearly defined (Doust, 2010). Common to all existing play concepts is that the play describes groups of commodities and prospects that closely resemble each other geologically. While hydrocarbon resources are grouped into clusters that share similar source, reservoir, seal and trap conditions (Doust, 2010), geothermal resources are grouped into clusters with similar heat transport mechanisms and geological controls on permeability and porosity (Moeck, 2014).

At geosystem scale, geothermal plays can be broadly separated into two types related to the mechanism by which heat is transported into the reservoir: the heat transport is dominated by either convection or conduction. Whether convection or conduction dominates depends primarily on the characteristics of the heat source and the distribution and range of permeability within the host rocks at the system scale (Smith & Chapman, 1983; Lawless et al., 1995; López & Smith, 1995, 1996; Bogie et al., 2005; Zech et al., 2016). It is important to recognise that convection and conduction are end-members of a heat transfer continuum. Conductive intervals

© The Author(s) 2020. This is an Open Access article, distributed under the terms of the Creative Commons Attribution licence (<http://creativecommons.org/licenses/by/4.0/>), which permits unrestricted reuse, distribution, and reproduction in any medium, provided the original work is properly cited.

always exist in localised parts of a convective regime (frequently, for example, on the outer margins of convective systems) while minor convective intervals can sometimes exist within conductive systems. For example, gravity-driven convection (i.e. forced convection) might occur within a discrete aquifer within a conduction-dominated system in steep mountainous terrain where recharge zones are at a higher elevation than discharge sites (Deming, 1992, 1994; Deming et al., 1992; Tóth, 2009). Alternatively, buoyancy variations due to different concentrations of fluid salinity can result in local convection (i.e. free convection) within sedimentary aquifers.

Interestingly, the hydrocarbon industry has recently refocused on play-based exploration and returned to exploration approaches of the 1990s (Shoup, 2018). Play-based exploration involves understanding all elements of a petroleum system for a given play and examines how and where those elements come together. In the style of play-based exploration of hydrocarbon resources, the assessment process starts with the geosystem-scale basin focus, followed by the regional-scale play focus and finally the local-scale prospect focus (Royal Dutch Shell, 2013). The geosystem scale focuses on large-scale elements such as plate setting, tectonostratigraphic framework and geologic evolution to determine sedimentary fill, stratigraphic sequences and the potential for generating reservoirs and commodities. The play scale focuses on regional-scale understanding of the petroleum system and leads to the identification, mapping and quantification of plays. The local-scale prospect focus is concerned with seismic evaluation, confidence assessment for a range of geological models and drilling selection. In the play-based exploration guide of Royal Dutch Shell (2013), petroleum plays are subdivided and concretised in play segments, play elements and play levels. These subdivisions are required for the play identification workflow. To be precise, a play level is a stratigraphic megasequence and captures play segments; a play segment is a subdivision of a play, field and prospect that share common geological controls within a play level and entrap play segments; a play element is a significant stratigraphic change as major bounding seals or changing depositional environment result in a different facies.

The geothermal industry, developers or agencies can benefit from these renewed attempts in play-based exploration by adopting and modifying approaches to describe, define and evaluate play types. The global application of the geothermal play type concept was successful and resulted in just three play types, with over 90% of the world's geothermal generation associated with convection-dominated magmatic/plutonic plays (Moeck et al., 2015). However, the application of the existing geothermal play type catalogue to cluster geothermal resources of a whole country involving crustal permeability for play characterisation is lacking.

This article presents the first geothermal play cluster of Germany and new terms for play-based geothermal exploration such as play level and play element, required for an ongoing categorisation of geothermal play types. The focus is on the depth relation of the porosity – permeability/transmissivity variation, and compiles data from the geothermal prospects in the Molasse Basin. New data interpretation of the deep well Gerestried, drilled in 2017 south of Munich, is integrated into this study and presented for the first time in a geothermal play context.

Geothermal installations in Germany

The majority of geothermal projects worldwide are located in geological systems with convection-dominated heat transport such as magmatic arcs or large-scale active faults (e.g. plate boundaries) (Moeck, 2014). Germany, with its conduction-dominated heat

transport systems, lacks natural steam reservoirs, which are functional for a direct drive of turbines.

Thus, geothermal power generation in Germany operates with binary systems, which use a working fluid in a secondary cycle (ORC or Kalina cycle). At the end of 2018, nine geothermal plants with an installed capacity of about 38 MW_{el} fed electricity into the German grid. However, the necessary implementation of the heat transition (referred to as *Wärmewende*) in Germany shifts the focus to geothermal heat production. In contrast to fossil fuels, geothermal heat in place is usable over a large depth and temperature range by a whole variety of technologies. Due to this scalability of geothermal applications and the perpetual heat demand, there is an enduring potential for the development of geothermal utilisation (e.g. Stober & Bucher, 2013).

In Germany, common deep geothermal utilisations for direct use are district heating plants or combined heat and power (CHP) plants, thermal spas and space heating. At one prospect (Kirchweidach/Bavaria), a greenhouse is heated by geothermal energy to substitute fossil fuels. Presently, about 190 operating geothermal installations are connected to reservoirs in a depth range between 400 and 5000 m (Figure 1). Geothermal well doublets comprising a production and an injection well are typically used for district heating, whereas spas only need a single well to cover the heat and water demand. Furthermore, five medium-deep to deep borehole heat exchangers are in operation in Germany. In addition, the use of mine water is becoming more and more interesting with regard to the heat transition in Germany (Bussmann et al., 2019).

The geothermal installed capacity of direct heat-use applications shows a considerable increase from 157.8 MW_{th} in 2010 to 336.1 MW_{th} in 2015 and reached 406.3 MW_{th} in 2018 (Agemar et al., 2014; GeotIS, 2019). The 29 district heating and CHP plants account for the largest portion of the geothermal capacity with about 346.2 MW_{th}. Due to favourable geological conditions, geothermal district heating and power plants are primarily located in the Molasse Basin in southern Germany, and subordinately in the North German Basin or along the Upper Rhine Graben (Agemar et al., 2012, 2014).

In addition to installations using geothermal energy from a greater depth range between 400 and 5000 m, numerous small- and medium-sized decentralised geothermal heat pump units are in use for heating and cooling of individual houses and office buildings. At the end of 2018, more than 380,000 geothermal heat pumps were running successfully in Germany, supplying renewable heat mostly for residential buildings. At the end of 2018, installed geothermal heat pumps have reached a thermal output of about 4400 MW_{th} in total (Weber et al., 2019).

Besides supporting research and development projects, the German federal government incentivises new projects by a feed-in tariff for geothermal electricity under the Renewable Energy Sources Act (EEG). Since summer 2014, the revised EEG grants a subsidy of €0.25 kWh⁻¹ for geothermal electricity generation. For a couple of years now, the German government has provided a grant for new heating technologies by the market stimulation programme (MAP). In 2015, very good conditions were established for the installation of geothermal heat pumps. The minimum grant for geothermal heat pumps was raised to €4,000 and can be over €7,000. The better conditions led to an increase in the number of subsidised heat pump units.

Crustal permeability and geothermal play types

The heat transport mechanisms by either conduction (i.e. heat flow), advection or convection (i.e. coupled heat and fluid flow)

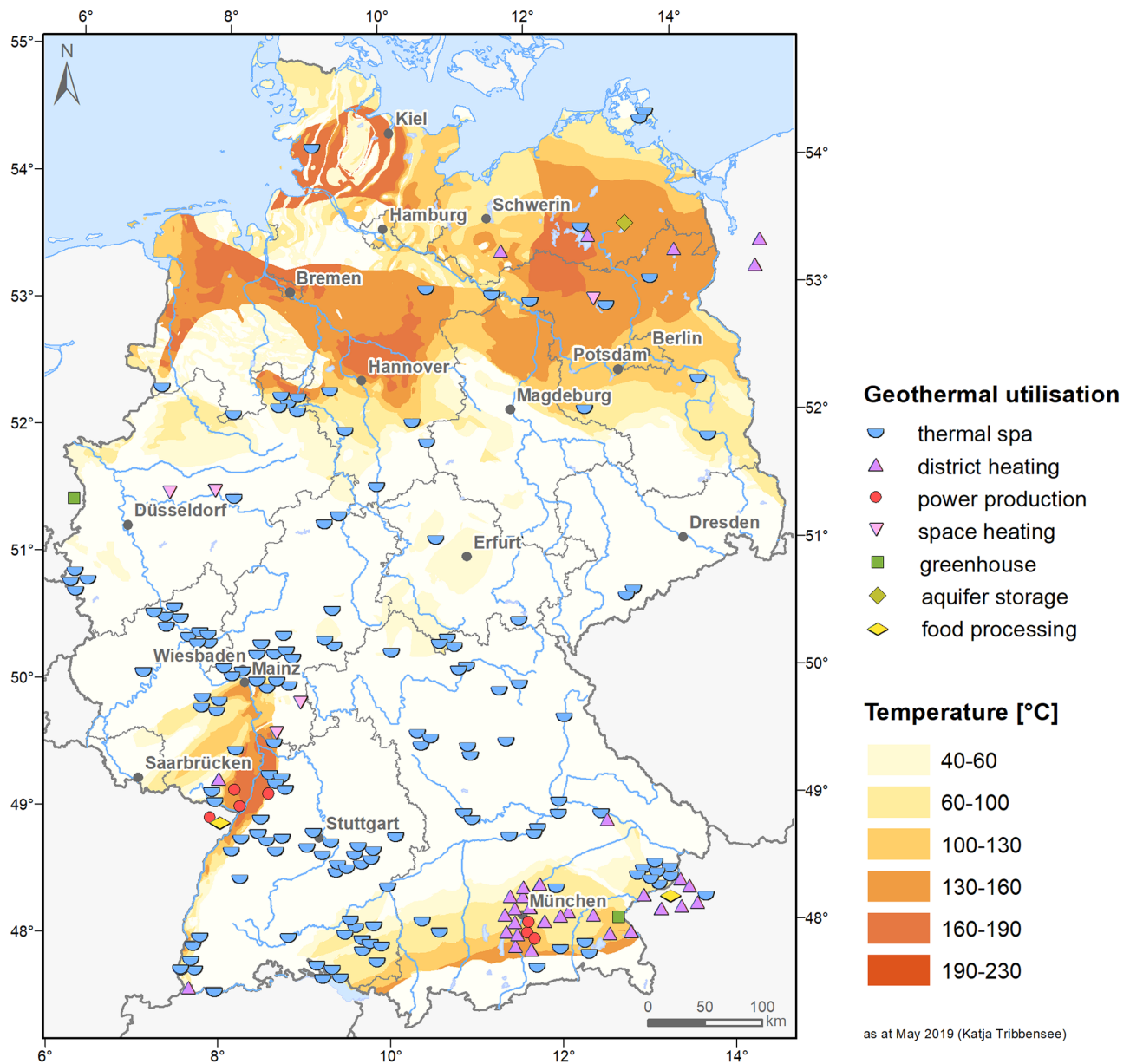


Figure 1. Sites of deep geothermal utilisation in Germany and neighbouring countries. The background colours represent predicted temperature ranges of the deepest identified geothermal resources in sedimentary or volcanic rocks respectively (map generated in GeotIS, 2019).

are directly related to porosity and permeability, whereby convection can be driven by thermal and chemical gradients (i.e. free convection) and convection/advection by hydraulic gradients induced by topography-driven groundwater flow (i.e. forced convection) (Smith & Chapman, 1983; Woodbury & Smith, 1985; López & Smith, 1995, 1996; Tóth, 2009). Moreover, the bulk porosity strongly influences rock thermal conductivity as shown by different types of conversion equations (or mixing models) required to calculate *in situ* thermal conductivity from laboratory thermal conductivity values (Brigaud et al., 1990; Vasseur et al., 1995; Fuchs et al., 2013; Albert et al., 2017). The permeability is directly related to the ability of rock to channel fluids, which are the heat transport medium in convection- or advection-dominated plays. Porosity and permeability are therefore the most important play properties to characterise and delineate geothermal plays hosting recoverable resources. The spatial variations of porosity

and permeability are important to understand for sustainable geothermal reservoir operation (Homuth et al., 2014). They are linked to the geologic criteria used to group and characterise geothermal plays by structures such as faults and fractures or processes such as tectonism, compaction and diagenesis (Moeck, 2014). All these and other processes may create, increase or reduce porosity and static permeability.

The permeability of rock is not only relevant to group geothermal plays but also governs the decision of applied geothermal technology. Low permeable or tight reservoirs need to be enhanced by reservoir stimulation to create enhanced geothermal systems (EGS) while high permeable reservoirs can serve for direct use referred to as hydrothermal systems. Moeck (2014) grouped conduction-dominated plays into EGS petrothermal, EGS hydrothermal and hydrothermal plays based on the ratio between porosity and permeability. Depth has a physically and geologically

meaningful influence on the ratio of porosity and permeability (Mountjoy *et al.*, 2001). The permeability of clastic sediments in the cool uppermost crust (0–2000 m depth) is often well constrained by a function of mechanical compaction (e.g. Daigle & Sreaton, 2016; Luijendijk & Gleeson, 2016). However, the predictability for porosity–permeability relations diminishes at depths where diagenesis becomes important (Mountjoy *et al.*, 2001). In conduction-dominated geothermal play types, the depth range between 2000 and 5000 m is the most relevant for district heating or binary (CHP) plants. In regions like Europe or North America, where sedimentary systems in the subsurface come together with a high heat demand at the surface, the crustal permeability structure at 2–5 km depth will obviously be of increasing interest for geothermal applications (e.g. Tester *et al.*, 2006; Weydt *et al.*, 2018).

In Germany, the geothermal development is most pronounced in the Molasse Basin, the German part of the North Alpine foreland basin (Bachmann *et al.*, 1987; Bachmann & Müller, 1992). The utilised reservoir rock is an Upper Jurassic carbonate sequence, also known as the ‘Malm’ formation (Meyer & Schmidt-Kaler, 1990). The typical wedge-shaped geometry of the foreland basin causes a continuous deepening of the ‘Malm’ from north to south (Sinclair & Allen, 1992). Consequently, geothermal operation in the Upper Jurassic applies from 800 to nearly 5000 m depth. Thus, the ‘Malm’ is an ideal study formation to investigate the porosity and permeability variations with respect to depth (Birner *et al.*, 2012), and hence to contribute to the knowledge of upper crustal permeability as claimed by Ingebritsen & Gleeson (2017).

Clustering geothermal resources of Germany into play types

The application of the generic geothermal play catalogue of Moeck (2014) for clustering the German geothermal resources results in four different geothermal play types for Germany and adjacent areas (Figure 2). The criterion for this first geothermal play type mapping is – according to the play concept – to group similar geosystems as intracratonic basins or foreland basins, granitic provinces or recent graben systems into geologic analogues. The most common play types are conduction-dominated, with the CD1 – intracratonic basin plays (e.g. North German Basin, Thüringen Basin, Paris Basin) followed by the CD2 – foreland basin (South German Molasse Basin) and orogenic belt play types (e.g. Alpine fold belt, Rhenish Massif), the CD3 – basement rock plays (e.g. Black Forest granitic province, Oberlausitz granitic province) and finally with the only convection-dominated play type, the CV3 – extensional terrain plays (Rhine Graben, Eger Graben) (Figure 2). Local topography-driven groundwater flow in hilly regions, such as in southern Germany the Ohlsbach plume with the discharge of deep ascending saline water (Stober *et al.*, 1999), is not considered in this countrywide investigation.

Regarding the history of geothermal development in Germany related to geothermal play types, the development started in the North German Basin as an intracratonic basin play type, overleapt and tremendously increased in a foreland basin play type, while the highest geothermal potential is in a convection-dominated extensional terrain play type. Specifically, the first geothermal heating plant Waren (Müritz) was installed in 1986 in the North German Basin, a CD1 – intracratonic basin play type. The highest geothermal gradient exists in the Upper Rhine Graben (Freymark *et al.*, 2017), a convection-dominated CV3 – extensional terrain play type. The present-day vast geothermal development with the largest number of installed geothermal well doublets is situated

in a CD2 – foreland basin play type, namely the Molasse Basin (Agemar & Tribbensee, 2018), where Upper Jurassic carbonate rocks are used as geothermal reservoir.

Focusing on the Molasse Basin as a case study for detailed play typing, it is evident that more than one geological formation or stratigraphic unit can be geothermally utilised in a geothermal play type, implying that a play type consists of different play levels. Following the play-based exploration concept of the hydrocarbon industry, the Molasse Basin is subdivided into different sedimentary megasequences, where the Upper Jurassic carbonate rocks represent a passive margin megasequence (Bachmann & Müller, 1992; Roeder & Bachmann, 1996). We therefore consider the Upper Jurassic ‘Malm’ formation as one play level in the Molasse Basin and review the number of existing geothermal wells as play-testing wells. The purpose of this well review is to identify where technical success results in a productive well at a certain formation or play element. The grouping of these play elements is derived from the porosity/permeability ratio compared with depth and carbonate facies, presented in the following sections.

Carbonate reservoirs as play level in foreland basins: example Upper Jurassic of the Molasse Basin

As mentioned above, play-based exploration passes through different scales from geosystem to local prospect scale. When a stratigraphic unit is analysed for exploration, it becomes obvious that the play type at the geosystem scale as hitherto defined by Moeck (2014) is not precise enough to describe likely reservoirs or promising drilling targets. We suggest, therefore, a scale-dependent play-based geothermal exploration adapted and modified from hydrocarbon play-based exploration (Royal Dutch Shell, 2013). Play-based exploration starts with the geosystem focus where the geological boundary conditions of a geothermal play type are described (Figure 3). The aim of this first step is to sort the geosystem into one of the geothermal play type categories as done in Figure 2. The second step focuses on the identified play and analyses levels and elements to better understand the play, namely the geologic controls on porosity and permeability, and ultimately to delineate exploration targets and prospect areas. In the third step, one play level and one or more play elements are analysed on the prospect scale (Figure 3).

The Molasse Basin is one of the best-studied geothermal play types in Germany (GeoMol Team, 2015). There are several stratigraphic units consisting mainly of carbonate or sandstone that could be defined as geothermal plays. From the base to the top, the most important ones are the Upper Muschelkalk carbonates (in SW Germany) and the Upper Jurassic ‘Malm’ carbonates in the Mesozoic (Stober & Villinger, 1997; Jodocy & Stober, 2009; Stober *et al.*, 2013a; Stober, 2014), as well as the Upper Eocene Lithothamnium, Basal Sandstone and Ampfing Sandstone, Lower Oligocene Baustein Beds and Upper Oligocene Chattian Sands in the overlying Tertiary Molasse sediments (Bachmann *et al.*, 1987; Bachmann & Müller, 1992; Fritzer *et al.*, 2018). In particular, the Upper Jurassic carbonate reservoir is intensively investigated by 2D seismic, 3D seismic (e.g. Lüschen *et al.*, 2014; Hartmann *et al.*, 2017), well log data, hydraulic test data (e.g. Birner *et al.*, 2012; Stober *et al.*, 2014; Dussel *et al.*, 2016), drill core and cutting analysis (Mraz *et al.*, 2018, 2019) and hydrochemistry studies (e.g. Birner *et al.*, 2011; Stober *et al.*, 2013a, 2014; Stober, 2014). The geological controls in the Upper Jurassic on the well productivity are still under debate; however, fault system, depositional system as reef and laminated facies, and karst are identified

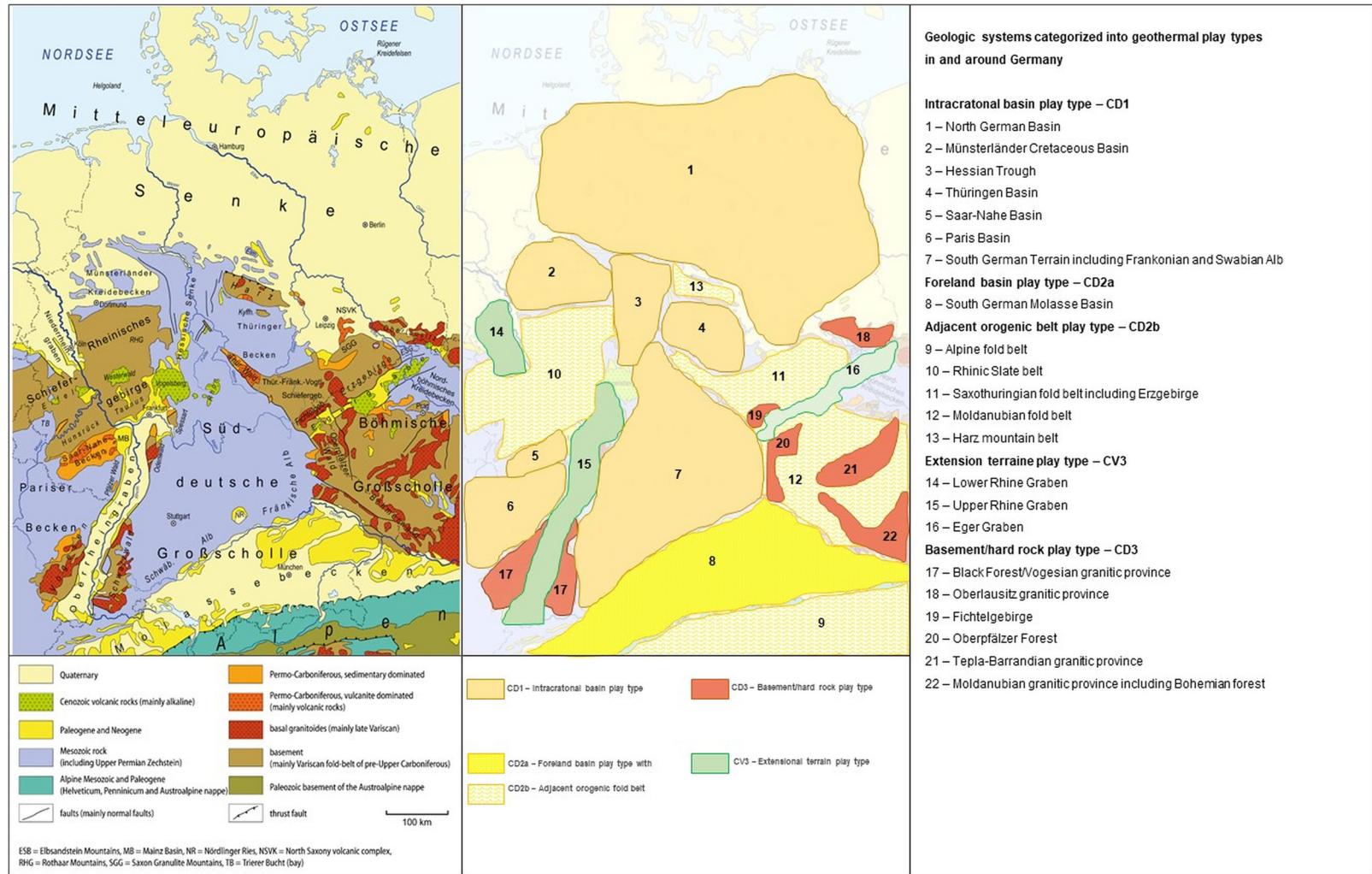
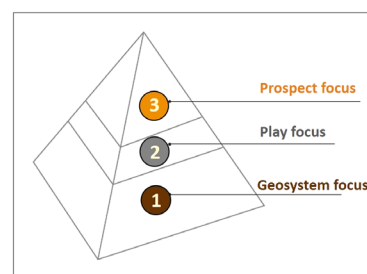


Figure 2. Categorisation of geologic systems into geothermal play types in and around Germany based on play types from Moeck (2014). Left: Geological map of Germany, serving as basemap for geothermal play type categorisation; right: First geothermal play type map of Germany. Geological map at left side modified from Gretarsson CC-BY-SA 4.0, based on Freudenberger & Schwerd (1996), Pawlewicz et al. (2003), Henningsen & Katzung (2006) and BGR (2008).

Table 1. Definitions of terms required for play-based exploration of geothermal resources

Term	Definition	Example
Geothermal play type	Patterns in heat charge system, permeability structure and fluid type related to a specific geologic setting, that resemble each other closely geologically, allowing worldwide analogue comparison	German Molasse Basin as part of the North Alpine Foreland Basin, the play type <i>foreland basin with conduction-dominated heat transport</i>
Play	Group of lithologically related stratigraphic unit having a chance for heat charge and reservoir within a play type	Upper Jurassic carbonate formation within the play type <i>foreland basin</i>
Play segment	Subdivision of a geothermal play. Fields and prospects that share common geological controls and thus a common probability-of-success profile	Carbonate platform or platform slope of Upper Jurassic carbonate formation of the Molasse Basin
Play level	Structural or stratigraphic level of a play; portrays plays at different depths	Mainly Kimmeridgian of the Upper Jurassic at 2 to 5 km depth of the Molasse Basin
Play element	Geologic controls within a play segment bounded by a change in the depositional environment	Reef facies, laminated facies, normal faults, karst in the Upper Jurassic carbonates in the Molasse Basin



1 Geologic system analysis as a whole

- plate setting
- tectonostratigraphic framework
- geosystem history
- rocks and fluids
- stratigraphic sequences
- play identification

2 Understanding the geothermal play in the geologic system

- play level identification
- play mapping
- play quantification
- play element
- summary play maps
- common risk segment maps
- exploration targets
- prospect selection

3 Play level analysis in prospect area

- geophysical evaluation on prospect scale
- geological model building
- volumetrical model
- selection of drilling targets
- technical risk evaluation
- confidence assessment for a range of models and prospects
- play execution activities

Figure 3. The exploration play pyramid, illustrating the steps of play-based exploration (modified from Royal Dutch Shell, 2013).

drilling targets. Similar to the definitions for hydrocarbon exploration plays, we define these geological controls on reservoir productivity as play segments (Table 1), while the ‘Malm’ formation as a stratigraphic unit is a play level (Table 1). Besides the primary geologic controls such as deposition or faults, also compaction and diagenesis, and hence episodes of basin subsidence and burial, have a strong effect on reservoir productivity (Drivet & Mountjoy, 1997; Mountjoy et al., 2001; Mraz et al., 2019). This is especially relevant in foreland basins, where one play level is located at increasing depth towards the orogenic belt (Sinclair & Allen, 1992; Mraz et al., 2018). We consider these depth-related different porosity and permeability domains as play elements (Table 1).

Porosity, permeability, depth ratio of carbonate play

The ratio of porosity to permeability in conduction-dominated geothermal plays is variable, reflecting different grades of compaction, diagenesis and brittle failure proceeding in different types of lithology (Moeck, 2014). Carbonate rock exhibits characteristically vast ranges of permeability and porosity caused by the manifold petrophysical properties and determined by fabric, mud content, facies, fossils and mineralogy (Mraz et al. 2019). In sum, carbonate reservoirs are of heterogeneous and anisotropic nature due to primary factors from biochemical sedimentation in different depositional environments and due to secondary processes such as pressure solution, precipitation, fracture formation and dissolution (karst).

In the Molasse Basin, the porosity of the Upper Jurassic carbonate play varies between $\ll 1\%$ and 17% , with an average of 5% (Koch et al., 2009; Böhm, 2012; Birner, 2013). The play level Kimmeridge/Tithonian built up by limestone has a porosity range between 0.07% and 17.1% , while the same play level has a porosity range of 1.5 to 6.7% when it is dolomitised (Koch et al., 2009; Dussel et al., 2016). Secondary dolomitisation controls porosity and also permeability by interconnected intercrystalline pores, resulting in a permeability range of 3×10^{-17} to $6.3 \times 10^{-14} \text{ m}^2$ (Birner et al., 2012; Birner, 2013). Elevated permeability in the order of 10^{-14} m^2 occurs within hypidiomorph to idiomorph dolomitised limestone in the play level Kimmeridge as derived from the completely cored well Moosburg (Birner, 2013). Hydraulic tests from several geothermal wells producing from the Upper Jurassic ‘Malm’ formation indicate a fracture-controlled reservoir because a minor part of the inflow derives from intact matrix rock and the major portion of the inflow originates from fracture zones (Birner, 2013).

One approach for evaluating carbonate plays is by their ratio of porosity to permeability (Moeck, 2014). In Figure 4, different carbonate reservoirs are compiled, along with categories of play elements such as lithofacies, fractures and karst, and illustrated in a porosity vs permeability diagram with regard to carbonate rock type. Salley (2000) has developed a similar reservoir classification scheme for hydrocarbon resources. Regarding the different play elements of the Upper Jurassic of the Molasse Basin, compared with carbonate formations from the Alberta Basin, which is the

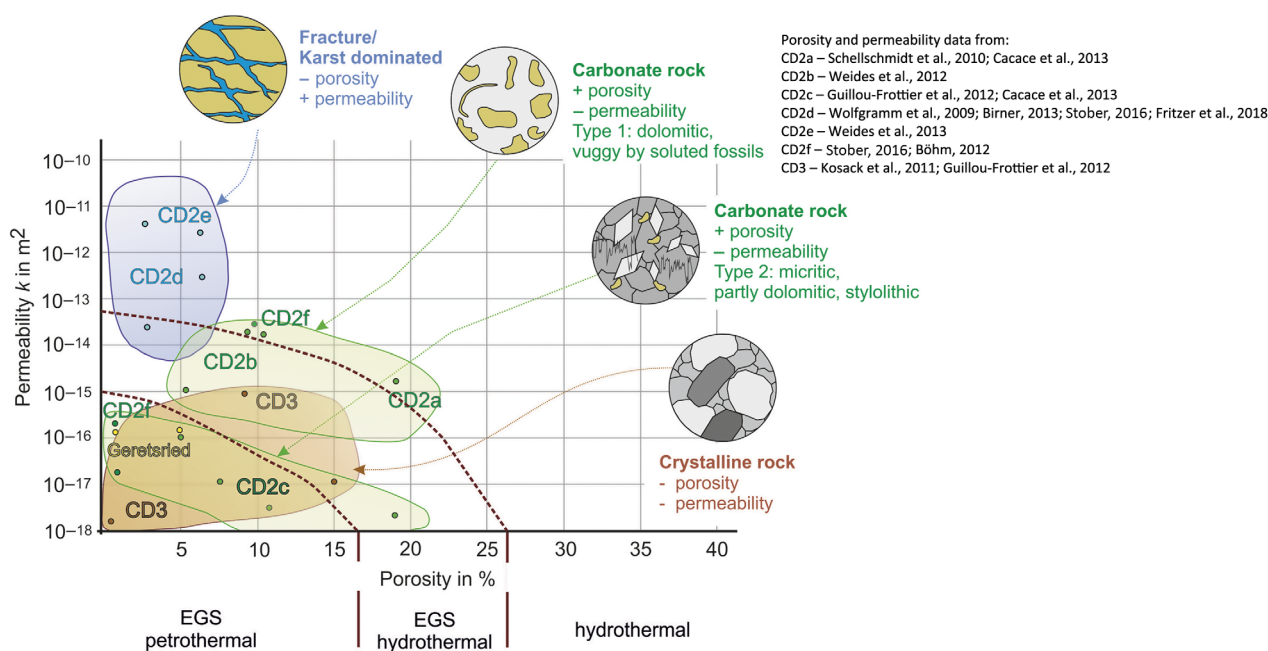


Figure 4. Porosity and reservoir permeability relation of different carbonate rocks, compared with crystalline rock that represents enhanced geothermal systems. CD2 and CD3 refer to play type indices for conduction-dominated play type labelling in Moeck (2014). CD2a, c, d, f are Upper Jurassic of the Molasse Basin; CD2b and e are carbonates from the Alberta Basin in Canada. The yellow dots represent carbonates collected in the deep geothermal well Geretsried (Molasse basin). Figure modified from Moeck (2014).

same geothermal play type as the Molasse Basin (i.e. a foreland basin), three different carbonate rock types correlate with certain ranges of porosity/permeability ratios (Figure 4): (1) fractured/karstic carbonate with low porosity and high permeability (data in the blue area of Figure 4), (2) vuggy carbonate with high porosity and low permeability (data in the upper green area of Figure 4), and (3) micritic carbonate with low porosity and low permeability (data in the lower green area of Figure 4). The micritic carbonate type is in the same porosity–permeability range as crystalline rock (data in the brown area of Figure 4). The operating geothermal projects in Germany installed in carbonate plays are mostly in fractured/karstic or vuggy play elements. Karstic play elements are hydrothermal systems with high flow rates, as in the example field Unterhaching close to Munich, while vuggy play elements require some acidic stimulation to gain economic well production. These geothermal fields can be considered as EGS hydrothermal, i.e. requiring technologies from Enhanced Geothermal Systems. The micritic play elements plot in the range of the EGS petrothermal system where the porosity/permeability ratio is so low that hydraulic stimulation or proppants are required to generate or keep fractures open. The porosity from the 4.5 to 5 km deep ‘Malm’ formation, derived from cores from the deep geothermal well Geretsried, coincide with the low porosity from cores of the granite at the Soultz geothermal test site (Figure 4); however, the permeability at Geretsried is higher, indicating an only fracture-controlled reservoir.

In addition to the rational comparison of permeability and porosity for carbonate reservoirs, the depth dependency of the transmissivity or hydraulic conductivity may help to delineate the local reservoir performance. Hydraulic parameters of the ‘Malm’ aquifer in the Molasse Basin are described and statistically analysed by Birner et al. (2012). For the western part of the Molasse Basin (i.e. the basin part in the federal state of Baden-Württemberg), Stober et al. (2013a) compiled and analysed hydraulic conductivities of the Upper Jurassic reservoir, resulting

in a good correlation between hydraulic conductivities (T/H ; H is the test section of the well derived from production tests). Further to the east, for the central part of the Molasse Basin, Birner et al. (2012) calculated and evaluated transmissivities of $1^{-5} \times 10^{-4} \text{ m}^2 \text{ s}^{-1}$ (southwest of Munich) to $1^{-5} \times 10^{-3} \text{ m}^2 \text{ s}^{-1}$ (northeast of Munich) from production tests. In recent years, the exploration has gone to deeper areas of the Upper Jurassic carbonate reservoir towards the Alpine frontal fault. Acid stimulation work at the Geretsried site, located c. 40 km south of Munich, was carried out at 4.3 to 4.7 km vertical depth with main inflow zones at 4.4 to 4.5 km along the sidetrack GEN-1ST-A1. The main production test was a nitrogen lift test in a 5 inch tubing with a down-hole shut-in (packer was installed at a depth of 3945 m MD). The nitrogen injection was carried out with a 1¾ inch coiled tubing. A 944 m³ volume of water produced with an average flow rate of 3.6 l s⁻¹. Analysis of the pressure recovery measurements results in a transmissivity of $3.6 \times 10^7 \text{ m}^2 \text{ s}^{-1}$ and a permeability $K = 10^{-16} \text{ m}^2$ and reveals a very low transmissivity, two orders lower than the wells in the productive Munich region (Figure 5).

Discussion and conclusion

The geothermal play concept helps to categorise geothermal resources by geological means. After a preliminary review, four different play types are present in Germany and neighbouring countries encompassing 22 geological systems (Figure 2). The geothermal play type catalogue introduced by Moeck (2014) is applicable to categorise geothermal play types countrywide as our case study with Germany shows, but seems not sufficiently precise to describe geothermal plays on a prospect scale. As an example, the Molasse Basin, representing the geothermal play type foreland basin with conduction-dominated heat transport, has probably more than one geothermal play (Fritzer et al., 2018). The most prominent and best-explored geothermal play in the Molasse Basin is the Upper Jurassic formation, built up by carbonate rock.

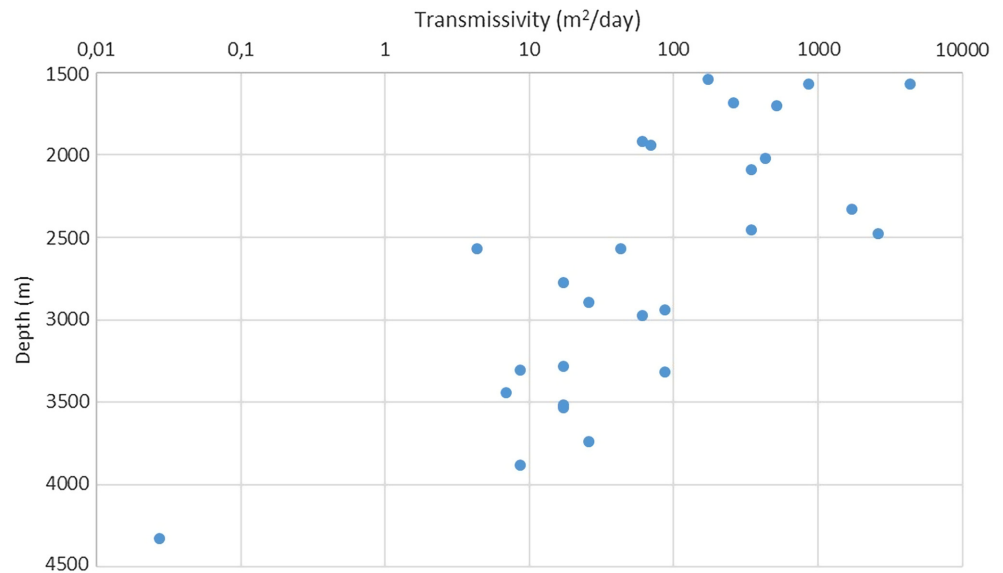


Figure 5. Depth dependency of transmissivity (logarithmic scale) for the Upper Jurassic reservoir in the Munich region (Malm in the depth range between 1500 and 4000 m) compared to the low transmissivity in the deeper part of the basin (>4000 m, sidetrack Geretsried GEN-1ST-A1).

Geothermal exploration results show that faults, depositional facies, karst, diagenesis and dolomitisation control porosity, permeability and hence reservoir productivity (Dussel *et al.*, 2016; Mraz *et al.*, 2019), which has also been shown for carbonates in the Alberta Basin (Drivet & Mountjoy, 1997; Mountjoy *et al.*, 2001).

Another approach to evaluate conduction-dominated geothermal plays is by the ratio of permeability to depth. Moeck (2014) introduced the porosity/permeability ratio with regard to reservoir rock type and showed the highest variability of this ratio for carbonate rocks. Depth was not considered in this porosity–permeability comparison. One important aspect in geothermal play typing might therefore be the correlation of permeability or reservoir transmissivity (the permeability related to reservoir thickness) with depth to identify the ideal play level for geothermal production. We therefore correlated the reservoir transmissivity of the Upper Jurassic from 27 geothermal wells to depth (in this case reservoir top) in the Molasse Basin.

The results indicate a transmissivity decrease with depth (Figure 4). Observed data from other parts worldwide confirm a decrease of crustal permeability with depth (e.g. Ingebritsen & Manning, 1999; Ehrenberg & Nadeau, 2005; Stober & Bucher, 2007, 2015; Stober, 2011), and most likely diagenetic processes such as pressure solution and precipitation might impair porosity and permeability with depth. Mraz *et al.* (2019) show in an extensive study of the Upper Jurassic in the Molasse Basin that depth-related processes, notably compaction and diagenesis, have a significant effect on porosity and reservoir productivity. Certain facies types such as reef or reef detritus become less relevant for reservoir production while compaction and diagenesis come to control permeability variability with depth (Mraz *et al.* 2019). The transmissivity data from the deepest geothermal well in the Molasse Basin, the well Geretsried GEN-1ST-A1 at 4.7 km depth, suggest that only faults and fractures constitute flow zones in tight rock, comparable with EGS sites in granite rock like Soultz (Kosack *et al.*, 2011) and Rittershoffen (Vidal *et al.*, 2017), although the Uppermost Jurassic (Kimmeridgian) contains reef detritus (Mraz *et al.*, 2019).

Examination of the porosity/permeability ratio helps to identify the possible reservoir performance, which correlates with the carbonate rock type, or play segments (Figure 4). In addition, the transmissivity/depth ratio helps to better understand the reservoir hydraulics (Figure 5). The distribution of transmissivity along the

depth in the Upper Jurassic of the central Molasse Basin seems to follow a power law model as presented for the crustal permeability by Ingebritsen & Manning (2010). Not only facies or other geological factors seem to control the reservoir productivity, but also depth. Future investigations should compare permeability, indicated by geology as karstification or fractures, from drill cores and/or cuttings with measured hydraulic conductivities from hydraulic tests.

As demonstrated by the transmissivity/depth ratio of the geothermal-play Upper Jurassic carbonate formation of the Molasse Basin, depth (and associated compaction) is a more relevant factor than primary geological controls on permeability. For the reconnaissance phase of exploration, it might be straightforward to derive this transmissivity/depth ratio from existing well data. The correlation between hydraulic conductivity and indications for porosity decline or increase found in the geological descriptions of drill cuttings or drill cores requires further investigation in order to derive the depth at which the transmissivity drops significantly by an order of magnitude. In the Upper Jurassic there might be a significant change of hydraulic conductivity due to the facies transition from Swabian to Franconian facies related to former reef growth and sedimentation in shallower and deeper basin parts of the northern Tethys margin (Leinfelder *et al.*, 2002). The ‘today’s observed depth dependence of hydraulic conductivity’ is obviously influenced by the primary difference in facies. Thus, an investigation of the dependence of the depth, thickness and intensity of different facies bodies should lead to interesting results (see Meyer & Schmidt-Kaler 1990; Birner *et al.* 2012; Stober *et al.* 2013b).

Adapted from play-based hydrocarbon exploration, new terms are required for geothermal play description, notably play segment, play level and play element. We introduced these terms for the first time for a well-developed geothermal play type in Germany, the Molasse Basin. This is a first attempt to define a terminology for a straightforward geothermal-play typing process. Further play analysis and categorisation is needed to refine or modify these first attempts. As the concept of geothermal play types is based on geological analogues, the progress and specification of play-based exploration steps and terms can only be advanced on an international level. The hydraulic characteristics presented by permeability/porosity ratio, and the reasonable permeability–

depth model for certain geothermal plays turned out to be crucial points in describing, understanding, defining and developing geothermal plays, ultimately to specify the reservoir performance, and should be examined in future attempts.

Acknowledgements. The PlayType project (ID 0324210), the GeotIS project (ID 0324025) and the Dolomitkluff project (ID 0324004) are funded by the Federal Ministry for Economic Affairs and Energy. We thank the Bavarian State Geological Survey LfU for data release. Thanks goes to Daniel Bohnsack (TU Munich) for providing porosity values for the Geretsried side-track. Katja Tribbensee generated the maps in ArcGIS.

References

- Agemar, T. & Tribbensee, K., 2018. GeotIS-Verbundmodell des Top-Malm im Bereich des nördlichen Vorlandbeckens der Alpen. *Zeitschrift der Deutschen Gesellschaft für Geowissenschaften* **169**(3): 335–341.
- Agemar, T., Schellschmidt, R. & Schulz, R., 2012. Subsurface temperature distribution in Germany. *Geothermics* **44**: 65–77.
- Agemar, T., Weber, J. & Schulz, R., 2014. Deep geothermal energy production in Germany. *Energies* **7**(7): 4397–4416.
- Albert, K., Schulze, M., Franz, C., Koenigsdorff, R. & Zosseder, K., 2017. Thermal conductivity estimation model considering the effect of water saturation explaining the heterogeneity of rock thermal conductivity. *Geothermics* **66**: 1–12.
- Bachmann, G.H., Müller, M. & Weggen, K., 1987. Evolution of the Molasse Basin (Germany, Switzerland). *Tectonophysics* **137**: 77–92.
- Bachmann, G.H. & Müller, M., 1992. Sedimentary and structural evolution of the German Molasse Basin. *Ecolae Geologicae Helvetiae* **85**(3): 519–530.
- Birner, J., 2013. Hydrogeologisches Modell des Malmaquifers im Süddeutschen Molassebecken. PhD Thesis. Freie Universität Berlin (Berlin): 86 pp.
- Birner, J., Mayr, C., Thomas, L., Schneider, M., Baumann, T. & Winkler, A., 2011. Hydrochemie und Genese der tiefen Grundwässer des Malmaquifers im bayerischen Teil des süddeutschen Molassebeckens. *Zeitschrift für geologische Wissenschaften* **39**(3–4): 291–308.
- Birner, J., Fritzer, T., Jodocy, M., Savatis, A., Schneider, M. & Stober, I., 2012. Hydraulische Eigenschaften des Malmaquifers im Süddeutschen Molassebecken und ihre Bedeutung für die geothermische Erschließung. *Zeitschrift für geologische Wissenschaften* **40**(2/3): 133–156.
- Bogie, I., Lawless, J.V., Rychagov, S. & Belousov, V., 2005. Magmatic-related hydrothermal systems: classification of the types of geothermal systems and their ore mineralization. In: Rychagov, S. (ed.): *Geothermal and Mineral Resources of Modern Volcanism Areas*, Proceedings of the International Kuril–Kamchatka Field Workshop, 16 July–6 August 2005. http://web.ru/conf/kuril_kam2005/art3.pdf.
- Böhm, F., 2012. Die Lithofazies des Oberjura (Malm) im Großraum München und deren Einfluss auf die tiefegeothermische Nutzung. Dissertation, Freie Universität Berlin (Berlin): 154 pp.
- Brigaud, F., Chapman, D.S. & Le Douaran, S., 1990. Estimating thermal conductivity in sedimentary basins using lithological data and geophysical well logs. *AAPG Bulletin* **74**: 1459–1477.
- Bundesanstalt für Geowissenschaften und Rohstoffe (BGR), 2008. *Geologische Karte der Bundesrepublik Deutschland 1:1.000.000 (GK 1000)*. Revised edn. Hannover.
- Bussmann, G., Appelhans, K., Hahn, F., Jagert, F., Bracke, R., Seidel, T. & König, C., 2019. Reutilization of mine water from heating and cooling in the abandoned colliery Dannebaum in Bochum. *European Geothermal Congress 11–14 June 2019, The Hague, the Netherlands*: 6 pp.
- Cacace, M., Bloecher, G., Watanabe, N., Moeck, I., Boersing, N., Scheck-Wenderoth, M., Kolditz, O. & Huenges, E., 2013. Modelling of fractured carbonate reservoirs: outline of a novel technique via a case study from the Molasse Basin, southern Bavaria, Germany. *Environmental Earth Sciences*, **70**(8), 3585–3602.
- Daigle, H. & Screatton, E. J., 2016. Evolution of permeability during sediment burial and subduction. In: Gleeson, T. & Ingebritsen, S. (eds): *Crustal permeability*. Wiley (Chichester): 104–121.
- Deming, D., 1992. Regional permeability estimates from investigations of coupled heat and groundwater flow, North Slope of Alaska. *Journal of Geophysical Research* **98**(B9): 16271–16286.
- Deming, D., 1994. Fluid flow and heat transport in the upper continental crust. *Geological Society of London Special Publication* **78**: 27–42.
- Deming, D., Sass, J.H., Lachenbruch, A.H. & De Rito, R.F., 1992. Heat flow and subsurface temperature as evidence for basin-scale ground-water flow, North Slope of Alaska. *Geological Society of America Bulletin* **104**(5): 528–542.
- Doust, H., 2010. The exploration play: what do we mean by it?. *AAPG Bulletin* **94**(11): 1657–1672.
- Drivet, E. & Mountjoy, E., 1997. Dolomitization of the Leduc Formation (Upper Devonian), southern Rimbey-Meadowbrook Reef Trend, Alberta. *Journal of Sedimentary Research* **67**(3): 411–423.
- Dussel, M., Lüschen, E., Thomas, R., Agemar, T., Fritzer, T., Sieblitz, S., Huber, B., Birner, J. & Schulz, R., 2016. Forecast for thermal water use from Upper Jurassic carbonates in the Munich region (South German Molasse Basin). *Geothermics* **60**: 13–30.
- Ehrenberg, S.N. & Nadeau, P.H., 2005. Sandstone vs. carbonate petroleum reservoirs: a global perspective on porosity-depth and porosity-permeability relationships. *AAPG Bulletin* **89**(4): 435–445.
- Freudenberger, W. & Schwerd, K. (eds), 1996. *Erläuterungen zur Geologischen Karte von Bayern 1:500 000*. Bayerisches Geologisches Landesamt (Munich).
- Freymark, J., Sippel, J., Scheck-Wenderoth, M., Bür, K., Stiller, M., Fritsche, J.-G. & Kracht, M., 2017. The deep thermal field of the Upper Rhine Graben. *Tectonophysics* **694**: 114–129.
- Fritzer, T., Settles, E. & Dorsch, K., 2018. *Bayerischer Geothermieatlas 2018 – Hydrothermale Energiegewinnung*. Bayerisches Staatsministerium für Wirtschaft, Energie und Technologie (Munich): 93 pp.
- Fuchs, S., Schütz, F., Förster, H.-J. & Förster, A., 2013. Evaluation of common mixing models for calculating bulk thermal conductivity of sedimentary rocks: correction charts and new conversion equations. *Geothermics* **47**: 40–52.
- GeoMol Team, 2015. *GeoMol – assessing subsurface potentials of the Alpine Foreland Basins for sustainable planning and use of natural resources*. Project Report. Augsburg: 188 pp.
- GeotIS (*Geothermal Information System for Germany*), 2019. Data on geothermal direct use and electricity. <https://www.geotis.de>.
- Guillou-Frottier, L., Carre, C., Bourguine, B., Bouchot, V. & Genter A., 2012. Hydrothermal convection beneath an inclined basement-sediment interface: application to the Rhine graben and its Soultz-sous-Forêts temperature anomaly. *AGU (American Geophysical Union) Conference*, 3–5 September 2012, San Francisco, CA. Poster V12C-2856.
- Hartmann, H. von, 2017. Architecture of a Carbonate platform in the German Molasse basin derived from seismic attributes. *EAGE (European Association of Geoscientists and Engineers) Workshop: Detailed Exploration of Carbonate Reservoirs*, 15 September 2017, Munich, Germany. Conference proceedings.
- Hemmingsen, D. & Katzung, G., 2006. *Einführung in die Geologie Deutschlands*. Springer Spektrum Akademischer Verlag (Heidelberg): 243 pp.
- Homuth, S., Götz, A. E. & Sass, I., 2014. Lithofacies and depth dependency of thermo- and petrophysical rock parameters of the Upper Jurassic geothermal carbonate reservoirs of the Molasse Basin. *Zeitschrift der Deutschen Gesellschaft für Geowissenschaften* **165**(3): 469–486.
- Ingebritsen, S. & Gleeson, T., 2017. Crustal permeability. *Hydrogeological Journal* **25**: 2221–2224.
- Ingebritsen, S. E. & Manning, C. E., 1999. Geological implications of a permeability-depth curve for the continental crust. *Geology* **27**(12): 1107–1110.
- Ingebritsen, S.E. & Manning, C.E., 2010. Permeability of the continental crust: dynamic variations inferred from seismicity and metamorphism. *Geofluids* **10**(1): 193–205.
- Jodocy, M. & Stober, I., 2009. Geologisch-geothermische Tiefenprofile für den südwestlichen Teil des Süddeutschen Molassebeckens. *Zeitschrift der Deutschen Gesellschaft für Geowissenschaften* **160**(4): 359–366.
- Koch, A., Clauser, C., Jorand, R., Vogt, C., Arnold, J., Mottaghy, D. & Pechinig, R., 2009. Erstellung statistisch abgesicherter thermischer und hydraulischer Gesteinseigenschaften für den flachen und tiefen Untergrund in Deutschland. Phase 2 – Westliches Nordrhein-Westfalen und bayerisches Molassebecken. *Endbericht (Aachen)*: 182 pp.

- Kosack, C., Vogt, C., Marquart, G., Clauser, C. & Rath, V.**, 2011. Stochastic permeability estimation for the Soultz-Sous-Forêts EGS reservoir. *In*: 36th Workshop on Geothermal Reservoir Engineering, 31 January–2 February 2011, Stanford, CA, USA. Conference proceedings.
- Lahee, F.H.**, 1933. Petroleum geology. *AAPG Bulletin* **17**(5): 548–557.
- Lawless, J.V., White, P.J., Bogie, I. & Andrews, M.J.**, 1995. Tectonic features of Sumatra and New Zealand in relation to active and fossil hydrothermal systems: a comparison. *Proceedings of the PACRIM '95 Congress, Publication Series – Australasian Institute of Mining and Metallurgy* **9/95**: 311–316.
- Leinfelder, R., Schmid, D., Nose, M. & Werner, W.**, 2002. Jurassic reef patterns – the expression of a changing globe. *SEPM Special Publication* **72**: 465–520.
- López, D.L. & Smith, L.**, 1995. Fluid flow in fault zones: analysis of the interplay of convective circulation and topographically driven groundwater flow. *Water Resources Research* **31**(6): 1489–1503.
- López, D.L. & Smith, L.**, 1996. Fluid flow in fault zones: influence of hydraulic anisotropy and heterogeneity on the fluid flow and heat transfer regime. *Water Resources Research* **32**(10): 3227–3235.
- Luijendijk, E. & Gleeson, T.**, 2016. How well can we predict permeability in sedimentary basins? Deriving and evaluating porosity-permeability relations for noncemented sand and clay mixtures. *In*: Gleeson, T. & Ingebritsen, S. (eds): *Crustal permeability*. Wiley (Chichester): 89–103.
- Lüschen, E., Dussel, M., Thomas, R. & Schulz, R.**, 2014. 3D seismic survey explores geothermal targets at Unterhaching, Munich, Germany, for reservoir characterisation. *Geothermics* **50**: 167–179.
- Meyer, R.K.F. & Schmidt-Kaler, H.**, 1990. Paläogeographie und Schwammriffentwicklung des süddeutschen Malm – ein Überblick. *Facies* **23**: 175–184.
- Moeck, I.**, 2014. Catalog of geothermal play types based on geologic controls. *Renewable and Sustainable Energy Reviews* **37**: 867–882.
- Moeck, I., Beardsmore, G. & Harvey, C.C.**, 2015. Cataloging worldwide developed geothermal systems by geothermal play type. *World Geothermal Congress, 20–24 April 2015, Melbourne, Australia. Conference proceedings.*
- Mountjoy, E., Drivet, E. & Marquez, X.**, 2001. Porosity modification during progressive burial in Upper Devonian Leduc reservoirs, Rimbey-Meadowbrook reef trend, Alberta. *CSPG (Canadian Society of Petroleum Geologists) Annual Convention, 18–22 June 2001, Calgary, AB, Canada. Conference proceedings.*
- Mraz, E., Moeck, I., Bissmann, S. & Hild, S.**, 2018. Multiphase fossil normal faults as geothermal exploration targets in the Western Bavarian Molasse Basin: case study Mauerstetten. *Zeitschrift der Deutschen Gesellschaft für Geowissenschaften* **169**(3): 389–411.
- Mraz, E., Wolfgramm, M., Moeck, I. & Thuro, K.**, 2019. Detailed fluid inclusion and stable isotope analysis on deep carbonates from the North Alpine Foreland basin to constrain paleofluid evolution. *Geofluids*, online first: 23 pp. doi: [10.1155/2019/8980794](https://doi.org/10.1155/2019/8980794).
- Pawlewicz, M.J., Steinshouer, D.W. & Gautier, D.L.**, 2003. Map showing geology, oil and gas fields, and geologic provinces of Europe including Turkey. *USGS Open File Report* 97-4701.
- Roeder, D. & Bachmann, G.**, 1996. Evolution, structure and petroleum geology of the German Molasse Basin. *In*: Ziegler, P. & Hörvath, F. (eds): *Peri-Tethys Memoir 2: Structure and prospects of Alpine basins and forelands. Mémoires du Muséum National d'Histoire Naturelle* **170**: 263–284.
- Royal Dutch Shell**, 2013. Play based exploration – a guide for AAPG's barrel award participants. *Shell Exploration and Production, Graphics, Media and Publishing Services (Rijswijk)*: 52 pp.
- Salley, R.C.**, 2000. *Applied sedimentology*. 2nd edn. Academic Press (San Diego, CA): 523 pp.
- Schellschmidt, R., Sanner, B., Pester, S. & Schulz, R.**, 2010. Geothermal energy use in Germany. *World Geothermal Congress, 25–29 April 2010, Bali, Indonesia. Conference proceedings. Paper 0152*: 19 pp. <http://www.geothermal-energy.org/pdf/IGASstandard/WGC/2010/0152.pdf>.
- Shoup, R.C.**, 2018. Returning to play-based exploration: exploring the fundamentals. *Offshore Technology Conference Asia, 20–23 March 2018, Kuala Lumpur, Malaysia. Conference proceedings. OTC-28440-MS*: 12 pp.
- Sinclair, H.D. & Allen, P.A.**, 1992. Vertical versus horizontal motions in the Alpine orogenic wedge: stratigraphic response in the foreland basin. *Basin Research* **4**: 215–232.
- Smith, L. & Chapman, D.S.**, 1983. On the thermal effects of groundwater flow. 1. Regional scale systems. *Journal of Geophysical Research* **88**(B1): 593–608.
- Stober, I.**, 2011. Depth- and pressure-dependent permeability in the upper continental crust: data from the Urach 3 geothermal borehole, southwest Germany. *Hydrogeological Journal* **19**(3): 685–699.
- Stober, I.**, 2014. Hydrochemical properties of deep carbonate aquifers in the SW German Molasse Basin. *Geothermal Energy* **2**(1): 13 pp.
- Stober, I.**, 2016. Hydraulic and hydrochemical properties of the deep carbonate aquifers in SW-Germany. *Geofluids* **15**: 161–178.
- Stober, I. & Bucher, K.**, 2007. Hydraulic properties of the crystalline basement. *Hydrogeological Journal* **15**(2): 213–224.
- Stober, I. & Bucher, K.**, 2013. *Geothermal energy – from theoretical models to exploration and development*. Springer (Heidelberg): 290 pp.
- Stober, I. & Bucher, K.**, 2015. Hydraulic conductivity of fractured upper crust: insights from hydraulic tests in boreholes and fluid-rock interaction in crystalline basement rocks. *Geofluids* **15**: 161–178.
- Stober, I. & Villinger, E.**, 1997. *Hydraulisches Potential und Durchlässigkeit des höheren Oberjuras und des Oberen Muschelkalks unter dem baden-württembergischen Molassebecken. Jahreshefte geologische Landesamt Baden-Württemberg* **37**: 77–96.
- Stober, I., Richter, A., Brost, E. & Bucher, K.**, 1999. The Ohlsbach Plume: discharge of deep saline water from the crystalline basement of the Black Forest, Germany. *Hydrogeology Journal* **7**(3): 273–283.
- Stober, I., Jodocy, M., Burisch, M. & Person, R.**, 2013a. Tiefenwässer im Oberen Muschelkalk-Aquifer des Oberrheingrabens und des Südwestdeutschen Molassebeckens. *Grundwasser* **18**(2): 117–127.
- Stober, I., Jodocy, M. & Hintersberger, B.**, 2013b. Gegenüberstellung von Durchlässigkeiten aus verschiedenen Verfahren im tief liegenden Oberjura des südwestdeutschen Molassebeckens. *Zeitschrift der Deutschen Gesellschaft für Geowissenschaften* **19**(3): 685–699.
- Stober, I., Wolfgramm, M. & Birner, J.**, 2014. Hydrochemie der Tiefenwässer in Deutschland. *Zeitschrift für geologische Wissenschaften* **41/42** (2013/14; 5–6): 339–380.
- Tester, J.W., Anderson, B.J., Batchelor, A.S., Blackwell, D.D., DiPippo, R., Drake, E.M., Garnish, J., Livesay, B., Moore, M.C., Nichols, K., Petty, S., Toksöz, M.N., Veatch, R.W. Jr, Baria, R., Augustine, C., Murphy, E., Negraru, P. & Richards, M.**, 2006. *The Future of Geothermal Energy: impact of enhanced geothermal systems (EGS) on the United States in the 21st century*. Massachusetts Institute of Technology (Boston): http://www1.eere.energy.gov/geothermal/pdfs/future_geo_energy.pdf.
- Tóth, J.**, 2009. *Gravitational systems of groundwater flow; theory, evaluation, utilization*. Cambridge University Press (New York): 297 pp.
- Vasseur, G., Brigaud, F. & Demongodin, L.**, 1995. Thermal conductivity estimation in sedimentary basins. *Tectonophysics* **244**: 167–174.
- Vidal, J., Genter, A. & Chopin, F.**, 2017. Permeable fracture zones in the hard rocks of the geothermal reservoir at Rittershoffen, France. *Journal of Geophysical Research Solid Earth* **122**: 4864–4887.
- Weber, J., Born, H. & Moeck, I.**, 2019 (accepted). Geothermal energy use, country update for Germany 2016–2018. *In*: *European Geothermal Congress, 11–14 June 2019, Den Haag, The Netherlands. Conference proceedings.*
- Weides, S., Moeck, I., Majorowicz, J., Grobe, M. & Palomi, D.**, 2013. Geothermal exploration of Paleozoic formations in Central Alberta. *Canadian Journal of Earth Sciences* **50**(5): 519–534.
- Weydt, L.M., Heldmann, C.-D.J., Machel, H.G. & Sass, I.**, 2018. From oil field to geothermal reservoir: first assessment for geothermal utilization of two regionally extensive Devonian carbonate aquifers in Alberta, Canada. *Solid Earth* **9**(4): 953–983.
- Wolfgramm M., Obst K., Brandes J., Koch R., Raubach K. & Thorwart K.**, 2009. Produktivitätsprognosen geothermischer Aquifere in Deutschland. *In*: *Der Geothermiekongress, 17–19 November 2009, Bochum, Germany. Conference proceedings.*
- Woodbury, A.D. & Smith, L.**, 1985. On the thermal effects of three-dimensional groundwater flow. *Journal of Geophysical Research* **90**(B1): 759–767.
- Zech, A., Zehner, B., Kolditz, O. & Attinger, S.**, 2016. Impact of heterogeneous permeability distribution on the groundwater flow systems of a small sedimentary basin. *Journal of Hydrogeology* **532**: 90–101.