

# Review of the mite genus *Krantzolaspina* Datta & Bhattacharjee (Mesostigmata, Parholaspididae) with re-description of *K. angustatus* comb. nov. (Ishikawa) from Indonesia

Edwin Javier Quintero-Gutiérrez<sup>1</sup>, Dorothee Sandmann<sup>2</sup>,  
Orlando Cómbita-Heredia<sup>3,4</sup>, Bernhard Klarner<sup>2</sup>,  
Rahayu Widyastuti<sup>5</sup>, Stefan Scheu<sup>2,6</sup>

**1** Instituto Colombiano Agropecuario (ICA), Subgerencia de Análisis y Diagnóstico, Grupo Red de Análisis y Diagnóstico Fitosanitario, Laboratorio de Análisis y Diagnóstico Fitosanitario de Manizales, Caldas, Carrera 30 # 65-15, Manizales, Colombia **2** University of Göttingen, J.F. Blumenbach Institute of Zoology and Anthropology, Untere Karspüle 2, 37073 Göttingen, Germany **3** Acarology Laboratory, Ohio State University, 1315 Kinnear Rd., Columbus, OH 43212, USA **4** Centro de Investigación en Acarología CIACARI Bogota, Colombia **5** Institut Pertanian Bogor, Department of Soil Science and Land Resources, Damarga Campus, Bogor 16680, Indonesia **6** University of Göttingen, Centre of Biodiversity and Sustainable Land Use, Büsgenweg 1, 37077 Göttingen, Germany

Corresponding author: Edwin Javier Quintero-Gutiérrez ([ejquinterog@gmail.com](mailto:ejquinterog@gmail.com))

Academic editor: F. Faraji | Received 14 May 2020 | Accepted 7 October 2020 | Published 25 November 2020

<http://zoobank.org/FFF388DB-2554-4773-ACB0-27189DCCACC9>

**Citation:** Quintero-Gutiérrez EJ, Sandmann D, Cómbita-Heredia O, Klarner B, Widyastuti R, Scheu S (2020) Review of the mite genus *Krantzolaspina* Datta & Bhattacharjee (Mesostigmata, Parholaspididae) with re-description of *K. angustatus* comb. nov. (Ishikawa) from Indonesia. ZooKeys 997: 47–68. <https://doi.org/10.3897/zookeys.997.54262>

## Abstract

Herein, we update the diagnosis and description of the genus *Krantzolaspina* Datta & Bhattacharjee and provide a list of the three valid species including new combinations and synonyms, as follows: 1) *Krantzolaspina angustatus* (Ishikawa, 1987) **comb. nov.** (= *Indutolaelaps jiroftensis* Hajizadeh et al., 2017 **syn. nov.**), 2) *K. rebatii* Datta & Bhattacharjee, 1989 and 3) *K. solimani* (Metwali, 1983) **comb. nov.** Finally, we re-describe *K. angustatus* (Ishikawa, 1987) **comb. nov.** based on the holotype from Japan, voucher specimens from Iran and additional females that we found in soil samples from oil palm plantations in Sumatra, Indonesia.

## Keywords

Gamasina, monotype, morphology, oriental region, rainforest, tropical lowland

## Introduction

The mesostigmatic mite family Parholaspididae has a total of 14 known genera distributed worldwide (Marchenko 2016). Species of Parholaspididae are found in a variety of habitats, such as soil-litter of forests and disturbed habitats (Jung et al. 2010), dead wood, moss, tree holes and some have been found associated with mammal nests, such as Cricetidae and Muridae (Yin et al. 1964, Petrova 1967a, 1967b, Gu 1984, Chen et al. 1994, Gu and Guo 1996). Other species have been reported from caves (Willmann 1940, Ishikawa 1995a, 2002) and also as early colonisers after habitat disturbance.

Indonesia is a biodiversity hotspot (Rintelen et al. 2017). However, knowledge on most groups of mites is still very limited. For instance, the family Parholaspididae is represented by only two described species (*Holaspulus viduus* Berlese, 1905 and *Parholaspis desertus* Berlese, 1918; both from Java). This is comparatively low with some countries in the Oriental region that have many more species records of Parholaspididae, such as China (56 species), Japan (28), Philippines (9) and Malaysia (7) (Berlese 1905, 1918, Vitzthum 1926, Evans 1956, Krantz 1960, Yin et al. 1964, 1999, Ishikawa 1966, 1969, 1976, 1979, 1980a, 1980b, 1987a, 1987b, 1993, 1994, 1995a, 1995b, 2002, Petrova and Tascava 1968, Bhattacharyya 1977, Gu 1984, Datta and Bhattacharjee 1989, Liang and Hu 1993, Tseng 1993, Yin and Bei 1993, Chen et al. 1994, Lee and Cho 1995, Gu and Guo 1996, Lee and Lee 1996a, 1996b, 2000, Ishikawa and Saichuae 1997, Ma 1998, 2004, 2010, 2012, Ma and Yin 1999, Ma and Yan 2001, Bei et al. 2004, 2009, Ma and Lin 2006, 2011, 2013, 2014a, 2014b, 2015, Bai and Ma 2014, Bai et al. 2014, Lee 2014, Kontschaán et al. 2015, Bhattacharyya and Kheto 2016). Other countries in the region have few species recorded but that may merely indicate a lack of knowledge: India (3 species), the Korean peninsula (1) and Thailand (1).

Despite the remarkable faunal diversity of the oriental region and numerous reported species of parholaspidid mites, there are shortcomings in the old species descriptions (lack of leg chaetotaxy, information on external poroidotaxy and adenotaxy of the idiosoma). For the previous, we decided to add information and organised the monotypic genus *Krantzolaspina*, based on available specimens, photographs from paratypes, original description and illustrations. For this reason, in the present work, a re-description of *Krantzolaspina angustatus* comb. nov. based on holotype, review of the generic concept based on type material and literature, a new synonymy and a list of valid species with some comments is presented.

## Material and methods

This study forms part of an investigation on soil and canopy arthropods of rainforests and agricultural systems in Jambi Province, Sumatra, Indonesia and was conducted within the framework of the interdisciplinary project “Ecological and socioeconomic functions of tropical lowland rainforest transformation systems (Sumatra, Indonesia)”

- EFForTS. For more details on the study region and the experimental design of the project see Drescher et al. (2016).

Mites were extracted from soil of oil palm plantations in the vicinity of Bukit Duabelas National Park, Jambi Province, Sumatra, Indonesia. Soil samples (1–3 cm depth) were taken using a spade and each consisted of a core of 16 × 16 cm area. Mites were extracted from samples using the high gradient canister method described in Kempson et al. (1963). All specimens were collected in November 2013 by B. Klarner. Mites were stored in 70% ethanol until slide-mounting in Hoyer's medium. For each mite, the gnathosoma was separated from the idiosoma and mounted next to it on the same slide.

Photographs and measurements were made using an Axiolab 5 phase contrast Zeiss microscope with an Axiocam 105 HD digital camera and Nikon Eclipse Ci connected to a computer-controlled digital camera Sight Ds-L3. Stacks of images were taken for each mite, using manual control of the focal plane. Selected images were combined using Zerene Stacker, version 1.04 (Zerene Systems, LLC 2009–2014). In some cases, images captured from different regions of the body were combined using the 'photo-merge' function in Adobe Photoshop, version 2015 (16.0 or 20150529.r.88; Adobe Systems Inc., San Jose, USA). Digital drawings were prepared with Adobe Illustrator, version CC 2015 (19.0.0), based on (combined) photographs.

All measurements are given in micrometres ( $\mu\text{m}$ ) and include the range (minimum–maximum). Lengths of shields were measured along their midlines and widths at their widest point, except for the sternometasternal shield which was measured at the level of insertion of setae *st2* and genitiventrianal shield between bases of *JVI*–2. Leg measurements were taken from the proximal margin of the coxa, along the midline of each segment, to the tip of the claw. Notations of body structures and idiosomal chaetotaxy follow Lindquist and Evans (1965) as adapted by Moraza and Peña (2006) and Marchenko (2016). Leg chaetotaxy follows Evans (1963) and Evans and Till (1965) and palps Evans and Till (1963). Idiosomal and peritrematal shield notations for pore-like structures (gland pores and poroids/lyrifissures) follow the system of Athias-Henriot (1971) for the ventral idiosoma and Athias-Henriot (1975) for the dorsal idiosoma.

Specimens of examined *K. angustatus* comb. nov. are deposited at NSMT (National Science Museum Natural History), Tokyo, Japan, the Holotype and voucher specimens at ESALQ (Escola Superior de Agricultura Luiz de Queiroz - Universidade de São Paulo), São Paulo, Brazil. Other collected materials are deposited at LIPI (Indonesian Institute of Science), Cibinong, Indonesia; SMNG (Senckenberg Museum), Görlitz, Germany; OSAL (Ohio State Acarology Collection), Columbus, USA and in ANIC (Australian National Insect Collection) Canberra, Australia. Additional photos of the species are digitally deposited in the online database Ecotaxonomy, accessible at <http://www.ecotaxonomy.org>.

The updated diagnosis and description of the genus were prepared after consulting the original description of the genus *Krantzolaspina* (Datta and Bhattacharjee 1989), as well as species descriptions (Metwali 1983, Ishikawa 1987a, Datta and Bhattacharjee 1989, Hajizadeh et al. 2017).

## Taxonomic accounts

### Parholaspididae

#### Genus *Krantzolaspina* Datta & Bhattacharjee

*Krantzolaspina* Datta & Bhattacharjee, 1989: 411.

**Type species.** *Krantzolaspina rebatii* Datta & Bhattacharjee, 1989.

**Diagnosis. Female.** Dorsal shield entire, usually bearing 32–36 pairs of setae. Presternal area with two pairs of free presternal platelets. Sternometasternal shield well-defined, bearing four pairs of setae. Genitiventrianal shield, bearing four pairs of setae: one pair of genital setae *st5* and three pairs of preanal setae (*Zv1* and *Jv1–2*) in addition to circumanal setae. Podal-peritrematal shield free from genitiventrianal shield. Epistome with long median projection and with lateral margins serrate. Cheliceral movable digit with a pair of unequal plumose arthrodistal brushes and no arthrodistal corona or with a single plumose arthrodistal brush and a fringed arthrodistal corona. Palp trochanter with a small spur-like process near its ventral base (not palpfemur as in the original description); palptarsal claw three-tined. Pretarsus I reduced or absent, pretarsi II–IV well-developed. Chaetotaxy of femur-genu-tibia of legs I: 13-12-12; II: 11-11-10; III: 6-8-8; IV: 6-8-8.

**Male.** Unknown.

**Description. Female. Dorsal idiosoma.** Dorsal shield 340–561  $\mu\text{m}$  long, broad anteriorly, gradually tapering posteriorly, anterior margin almost straight/truncate, partially covering idiosoma, leaving with the lateral and posterior margins of the soft integument broadly or narrowly exposed; shield mostly reticulate. Dorsal shield hypotrachous, bearing 32 (*J5* and *S5* slightly pilose in *K. angustatus* comb. nov.) or 36 pairs of smooth setae, most setae long and of similar length. Unsclerotised cuticle with 10–15 pairs of *r*, *R* and/or *UR* setae combined, smooth and moderately long (*UR* setae slightly pilose in *K. angustatus*).

**Ventral idiosoma.** All setae aciculate, smooth and relatively long (except *Jv4–5*, *Zv4–5* pilose in *K. angustatus*). Tritosternum with a pair of free pilose laciniae. Presternal area with two pairs of free, well-sclerotised presternal platelets. Sternometasternal shield well defined, longer than wide. Shield with posterior and anterior margin concave, partially smooth, reticulate or punctate (anterior and lateral margins ornamented in *K. angustatus*), bearing four pairs of setae *st1–4* and three pairs of poroids *iv1–3*. Peritrematal shield well-developed, broad, anteriorly free and posteriorly fused with developed podal shield; two pairs of poroids (*id7*, *ip*) and one pair of gland pores (*gdp*) posterior to stigma; Genitiventrianal shield longer than wide, reticulate, flask-shaped; cribrum developed. Soft opisthogastric cuticle with 6–7 pairs of setae; never hypertrichous. Metapodal platelets present or absent.

**Gnathosoma.** Subcapitulum with the corniculi well sclerotised, elongated and horn-like. Internal malae bifurcate, well separated from each other, densely fimbriated on outer margin and with apices slightly shorter than corniculi. Deutosternal groove with multi-

dentate transverse rows, subcapitular setae smooth and aciculate, *h1*–*h3* often longer than *h2* and *pc*. Surface posterolaterad to seta *pc* with a pointed spine-like process or absent (simply flat). Epistome with a median projection and lateral margins irregularly serrate or may be smooth. Chelicera chelate-dentate; movable digit often bearing two teeth. A setiform pilus dentilus; smooth dorsal cheliceral seta, dorsal lyrifissure, a pair of unequal plumose arthrodial brushes or one plumose arthrodial brush and a narrow fringed arthrodial corona at base of the movable digit are present. Palp trochanter with a small pointed spine-like process in the ventral surface and with setae *v1* and *v2* slightly thickened and long, in contrast with setae of the other palp segments; palp tarsal claw three-tined.

*Legs* chaetotaxy as in diagnosis (see above).

**Male.** Unknown.

## Re-description

### *Krantzolaspina angustatus* (Ishikawa, 1987) **comb. nov.**

*Proparholaspulus angustatus*– Ishikawa, 1987a: 82; Kadkhodae et al., 2013: 131.

*Indutolaelaps jiroftensis* Hajizadeh et al., 2017 **syn. nov.**

**Diagnosis. Female.** Dorsal shield entire, mostly reticulate (except the anteromedial region which is smooth), partially covering the idiosoma, broad anteriorly and posteriorly narrowing; shield bearing 32 pairs of setae, most setae moderately long and smooth, except *j1*–*2* and *z1* which are slightly shorter and setae *S5* and *Z5* slightly pilose. Unsclerotised lateral cuticle of the idiosoma with a total of 15 pairs of smooth setae of similar length, except five pairs of *UR* setae slightly pilose, the pairs of setae *r6* and *R1* slightly shorter than *r5*–*7* plus seven pairs of *UR* setae. In the idiosoma ventre, all setae aciculate and smooth, except *JV4*–*5* and *ZV4*–*5* which are pilose. Presternal area with two pairs of free and presternal platelets. Sternometasternal shield mostly reticulate and covered by semi-rounded cells in the lateral margins, bearing four pairs of setae. Peritrematal shield anteriorly free, fused to the sternometasternal shield between coxae I–III, posteriorly fused with the parapodal shield and extended beyond posterior margin of the coxae IV, region of peritrematal + parapodal shield reticulate and covered by some semi-rounded cells; peritreme extending between coxae I–II at level of *st1*. Genitiventrianal shield longer than wide, reticulate, flask-shaped and bearing four pairs of setae *st5*, *JV1*–*3*, as well as three circumanal setae *pa* and *po*. Soft opisthogastric ventral cuticle with six pairs of setae *JV4*–*5*, *ZV2*–*5*. Metapodal platelets free, small and elliptical in shape. Deutosternal groove with six transverse rows, surface of the gnathosoma with pointed spine-like process similar to the ventral surface of the palp trochanter. Epistome with median projection bifurcate or trifurcate distally, lateral edges finely and irregularly serrate. Cheliceral digit movable and fixed with four and two teeth, respectively, base of movable digit with a plumose arthrodial brush and a narrow fringed arthrodial corona. Palp tarsal claw three-tined. Pretarsus I reduced or absent and pretarsi II–IV with pretarsi well-developed.

**Male.** Unknown.

**Female** (Figs 1–6) ( $n = 6$ ). *Idiosomal dorsum* (Fig. 1). 541–611  $\mu\text{m}$  long, 287–372  $\mu\text{m}$  wide. **Dorsal shield** 514–536  $\mu\text{m}$  long, 219–239  $\mu\text{m}$  wide (at level between  $r2$ – $3$ ), entire and broad anteriorly with the anterior margin slightly straight and posteriorly narrowing, covering partially the idiosoma with the lateral and posterior margins of soft integument broadly exposed, most surface of the shield reticulate, but smooth on the dorsocentral region between the bases of  $z1$  and  $J2$ . Dorsal shield bearing 32 pairs of setae of similar length and shape, most setae relatively long (36–46  $\mu\text{m}$ ) and smooth, except  $j1$ – $2$  and  $z1$  slightly shorter (31–35  $\mu\text{m}$ ) and the setae  $S5$  and  $Z5$  slightly pilose (Fig. 1). **Podonotal region** with 17 pairs of setae  $j1$ – $6$ ,  $z1$ – $2$ ,  $z4$ – $6$ ,  $s2$ ,  $s6$ ,  $r2$ – $5$  and 10 pairs of poroids, including three pairs of glands  $gd1$ – $2$  and  $gd4$ . **Opisthonotal region** with 15 pairs of setae  $J1$ – $5$ ,  $Z1$ – $5$ ,  $S1$ – $5$  and 10 pairs of poroids, including two glands  $gd8$  and  $gd9$ . **Unsclerotised lateral cuticle** bearing a total of 15 pairs of smooth setae of similar length (38–44  $\mu\text{m}$ ) except five pairs of  $UR$  setae slightly pilose (Fig. 1); the pairs of setae  $r6$  and  $R1$  slightly shorter than  $r5$ – $7$  and the six pairs of  $UR$  setae (two of them on the ventral side); a pair of lyrifissures ( $Rp$ ) present between  $R3$  and  $R4$ .

*Idiosomal venter* (Figs 2, 3A–C). All setae aciculate and smooth, except  $Jv4$ – $5$ ,  $Zv4$ – $5$  which are pilose (Fig. 2). **Tritosternum** (Fig. 2) with columnar base and pair of free pilose laciniae. **Presternal area** bearing two pairs of free, well-sclerotised, transversely aligned and presternal platelets  $ppl$  (Figs 2, 3A–C), with transversal lineae over surface. **Sternometasternal shield** (Figs 2, 3A–C) 202–209  $\mu\text{m}$  long, 104–110  $\mu\text{m}$  wide (at level of  $st2$ ) well-defined, reticulate and covered by semi-rounded cells in the lateral margins, posteriomedial area smooth beyond to the setae  $st3$ ; anterior and posterior shield margin concave, bearing four pairs of setae  $st1$ – $st4$  (36–41) and three pairs  $iv1$ – $3$  of slit-like poroids;  $iv1$  larger than  $iv2$ – $3$ , the latter rounded. **Peritrematal shield** (Fig. 2) broad, anteriorly free, fused to the exopodal shield (distinctly more sclerotised), to sternometasternal shield between the coxae I–III and posteriorly with the well-developed parapodal shield; shield extended beyond the posterior margin of the coxa IV, this area reticulate and covered by some semi-rounded cells; two pairs of poroids ( $id7$ ,  $ip$ ) and one pair of gland pores ( $gdp$ ) discernible. Peritreme extending anteriorly between coxae I–II, at level of seta  $st1$ . **Genitiventrianal shield** (Figs 2, 3A–C) 246–264  $\mu\text{m}$  long  $\times$  127–135  $\mu\text{m}$  wide, reticulate and flask-shaped; shield with four pairs of setae  $st5$  35–37 (slit-like poroids  $iv5$  on unsclerotised cuticle and posterolaterad of  $st5$ )  $ZV1$ ,  $JV1$ – $2$  39–42 additionally to the circumanal setae  $pa$  and  $po$ , paranal setae  $po$  (27–29) aligned with anterior margin of anal opening, postanal seta shorter  $po$  (15–17); gland opening  $gv3$  on posterolaterad shield margins, at level slightly anterior to paranal setae, cribrum well-developed. Soft opisthogastric cuticle with seven pairs of setae  $JV3$ – $5$ ,  $ZV2$ – $5$  (39–40) and three poroids, including one ( $ivp$ ). **Metapodal** (Fig. 2;  $met$ ) platelets free, small and suboval.

*Gnathosoma* (Fig. 4A–L). **Subcapitulum** (Fig. 4A–C): corniculi well sclerotised, elongated and horn-like slightly shorter than cheliceral movable digit. Internal malae bifurcate, totally separated from each other, densely fimbriated on outer margin and with apices slightly shorter than corniculi. Deutosternal groove with six transverse rows denticles, each bearing 8–21 denticles and distal row smooth, with lateral ridges each side

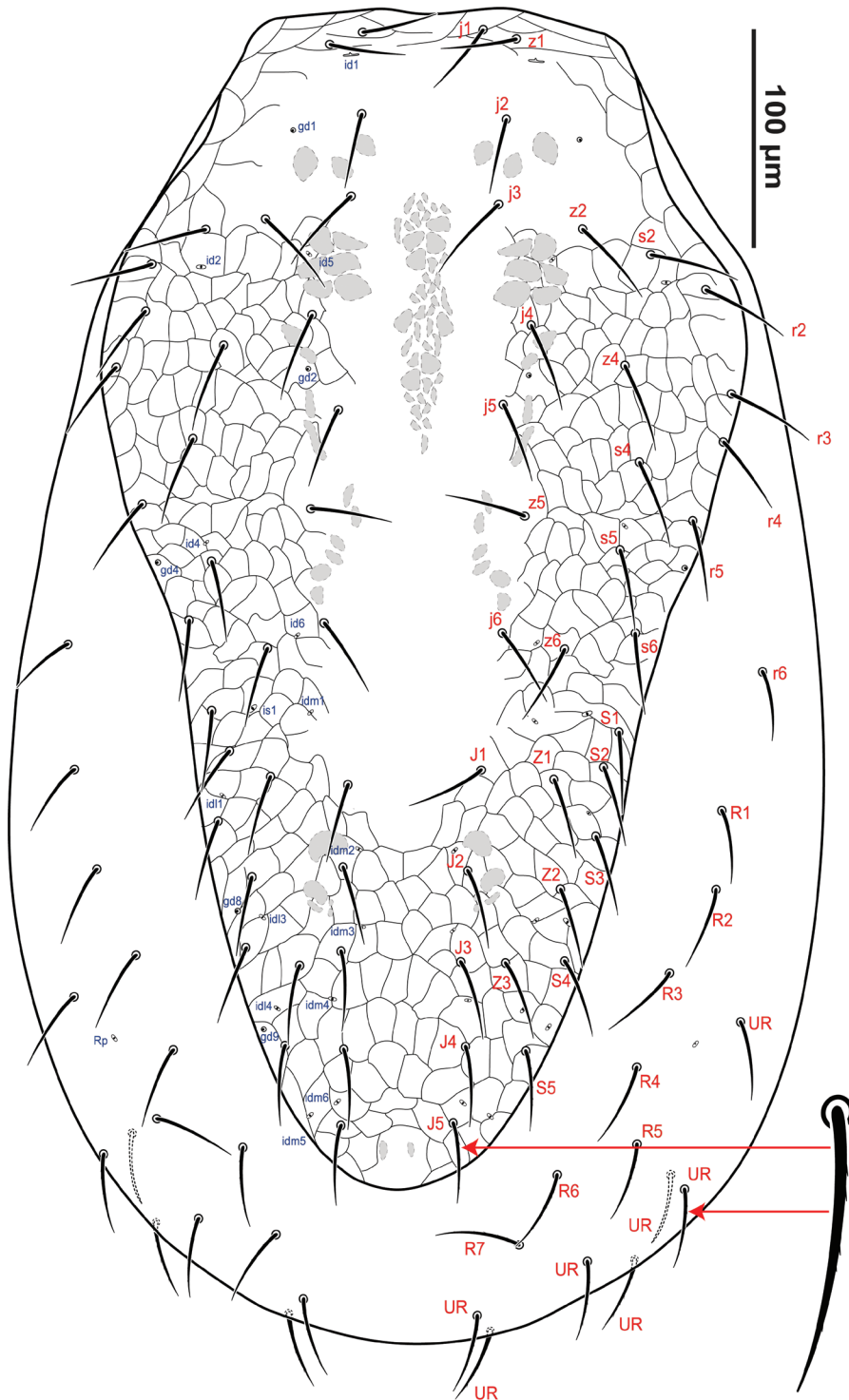


Figure 1. *Krantzolaspina angustatus* comb. nov., adult female. Dorsal idiosoma.

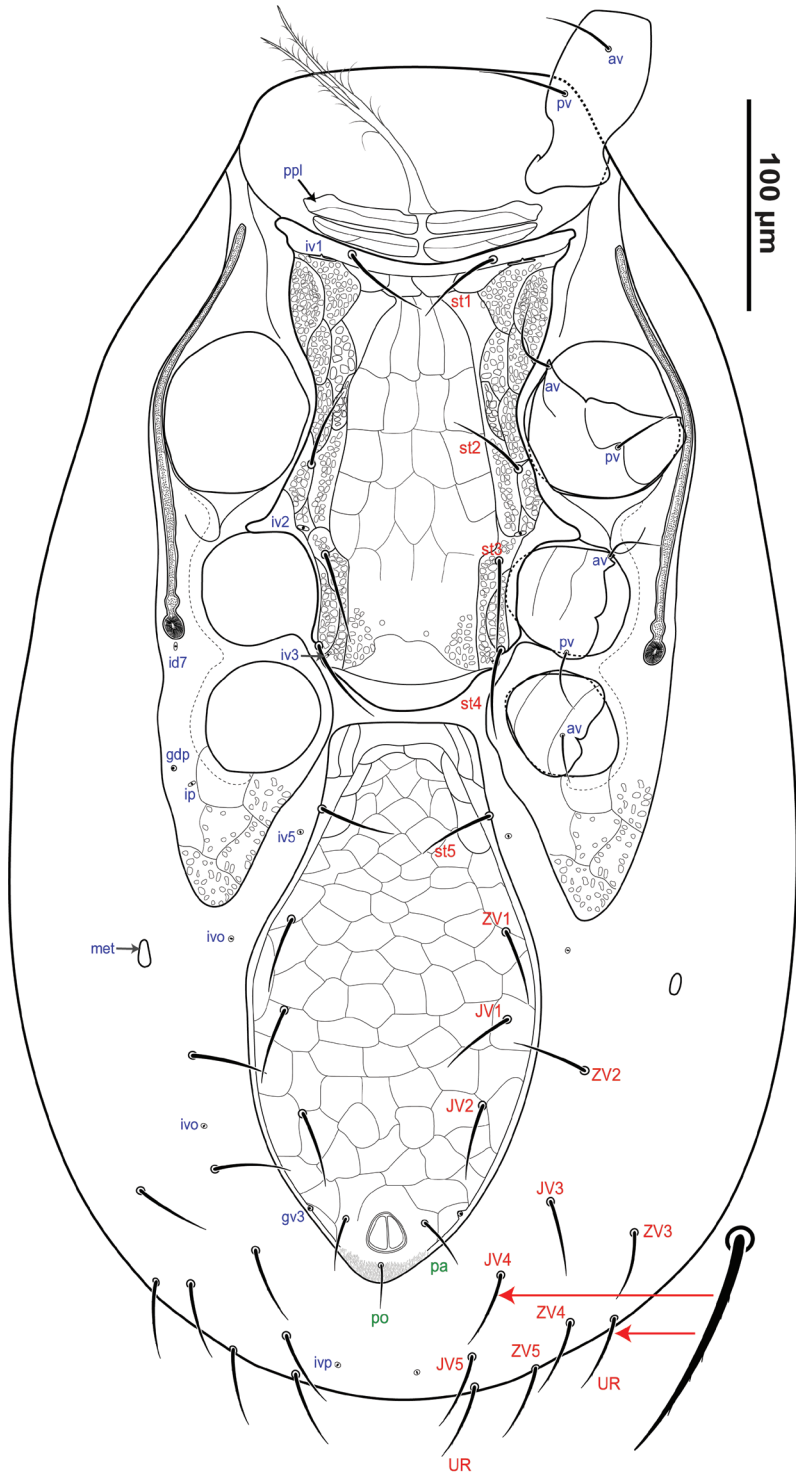
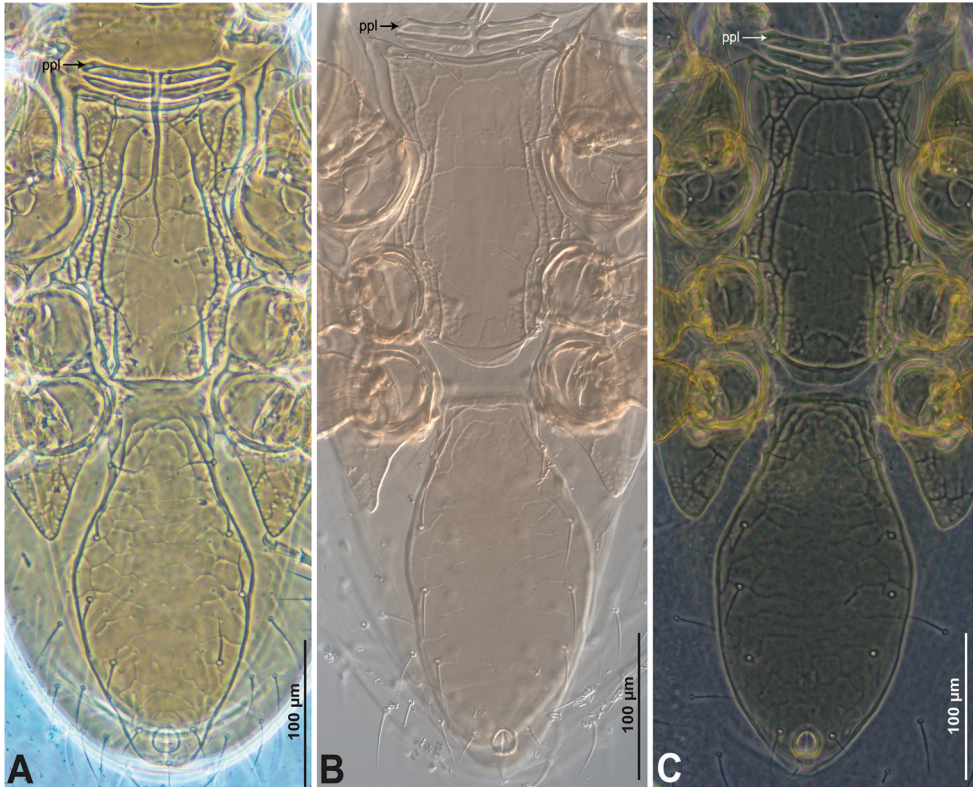


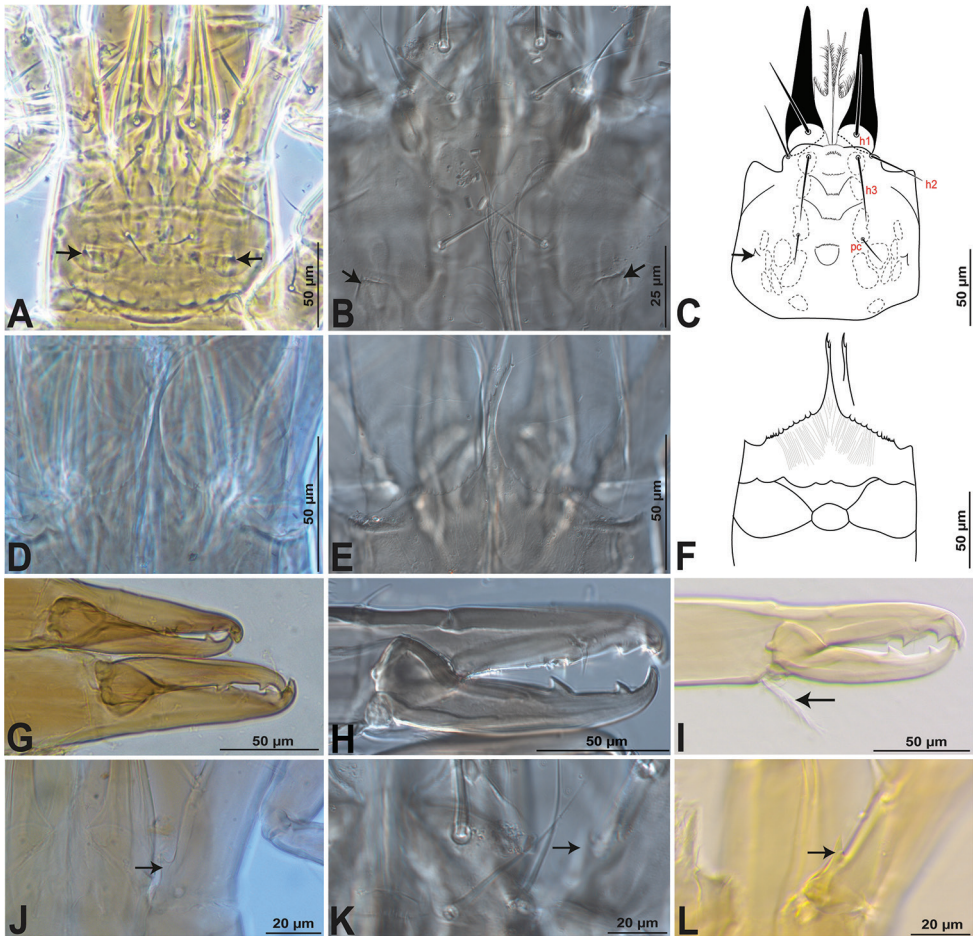
Figure 2. *Krantzolaspina angustatus* comb. nov., adult female. Ventral idiosoma.





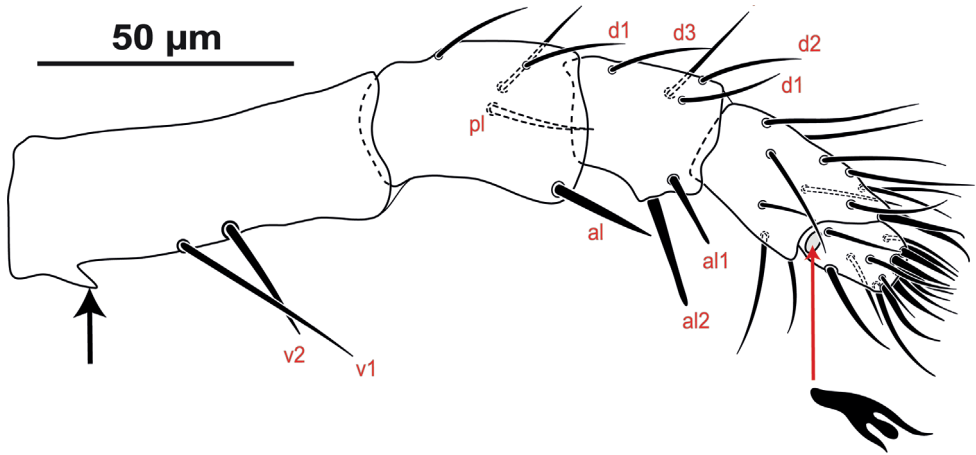
**Figure 3.** *Krantzolaspina angustatus* comb. nov., adult female. Ventral idiosoma showing the sternometasternal, genitiventrianal and parapodal shield. **A** Holotype of *Krantzolaspina angustatus* **B** Paratype of *Indutolaelaps jiroftensis* syn. nov., photos by Raphael Castilho **C** New material from Indonesia.

of the 2<sup>nd</sup> and 3<sup>rd</sup> row; subcapitular setae smooth and aciculate, *h1* 51–54 and *h3* 40–43 longer than *h2* 34–37 and *pc* 17–20. Surface posterolaterad to seta *pc* with a minute or a small spine-like process (Fig. 4A–C). Epistome (Fig. 4D–F) with a median projection bifurcate or trifurcate distally, lateral edges finely and irregularly serrate. **Cheliceral** (Fig. 4G–I) fixed digit (106–111) with four teeth (most proximal small and most distal inserted subapically) plus one distal hook-like tooth and a setiform *pilus dentilus*; dorsal and anti-axial lyrifissures present as well as dorsal setae smooth; movable digit (97–103) with two teeth directed backwards and one distal hook-like tooth, base of the movable digit with a plumose arthrodistal brush (44–48) (Fig. 4I, see arrow) much shorter than movable digit and a narrow fringed arthrodistal corona which is only discernible ventrally. **Palp** (Fig. 5) with normal chaetotaxy for Parholaspididae, with 2-5-6-14-15 setae on trochanter-femur-genu-tibia-tarsus; palptrochanter almost twice longer than palpfemur, with a small pointed spine-like process on the ventral surface (Figs 4J–L, 5; see arrow) and setae *vl*-2 thickened and long, in contrast to the setae of the other palp segments; palpfemur *al* thickened, palpgenu with setae *al1*-2 thickened and spatulate distally. Palp tarsal claw three-tined, medial tine conspicuous distally spatulate.



**Figure 4.** *Krantzolaspina angustatus* comb. nov., adult female, Gnathosomal structures. Holotype (Left); *Indutolaelaps jiroftensis* syn. nov. (Middle), photos by Raphael Castilho; New material from Indonesia (Right). **A–C** Subcapitulum **D–F** Epistome **G–I** Chelicera **J–L** Palp trochanter with a ventral spine-like process.

*Legs* (Fig. 6A–D) lengths (in  $\mu\text{m}$ ): I (Fig. 6A): 573–625, II (Fig. 6B) 461–495, III (Fig. 6C) 396–421, IV (Fig. 6D) 550–575. The leg chaetotaxy/setation—Coxae: I 2 (0, 0/1, 0/1, 0); II: 2 (0, 0/1, 0/1, 0); III: 2 (0, 0/1, 0/1, 0); IV: 1 (0, 0/0, 0/1, 0); trochanters: I: 6 (1, 0/1, 1/2, 1); II: 5 (1, 0/1, 0/2, 1); III: 5 (1, 1/1, 0/2, 0); IV: 5 (1, 1/1, 0/2, 0); femora: I: 13 (2, 3/1, 2/3, 2); II: 11 (2, 3/1, 2/2, 1); III: 6 (1, 2/1, 1/0, 1); IV: 6 (1, 2/1, 1/0, 1); genua: I: 12 (2, 3/2, 2/1, 2); II: 10 (2, 2/1, 2/1, 2); III: 8 (2, 2/1, 2/1, 1); IV: 8 (2, 2/1, 2/0, 1); tibia: I: 12 (2, 3/2, 2/1, 2); II: 10 (2, 2/1, 2/1, 2); III: 8 (2, 1/1, 2/1, 1); IV: 8 (2, 1/1, 2/1, 1); tarsi I: not counted, II: 18; III: 18; IV: 18. Pretarsus I reduced or absent and pretarsi II–IV well-developed, including a pair of claws and a pulvillus. Legs with all setae aciculate and smooth, most setae are relatively long, except leg III which has comparatively shorter setae, tarsi I–IV which have longest and thicker setae than leg segments especially tarsus IV and a set of very short setae as follows: *ad* in



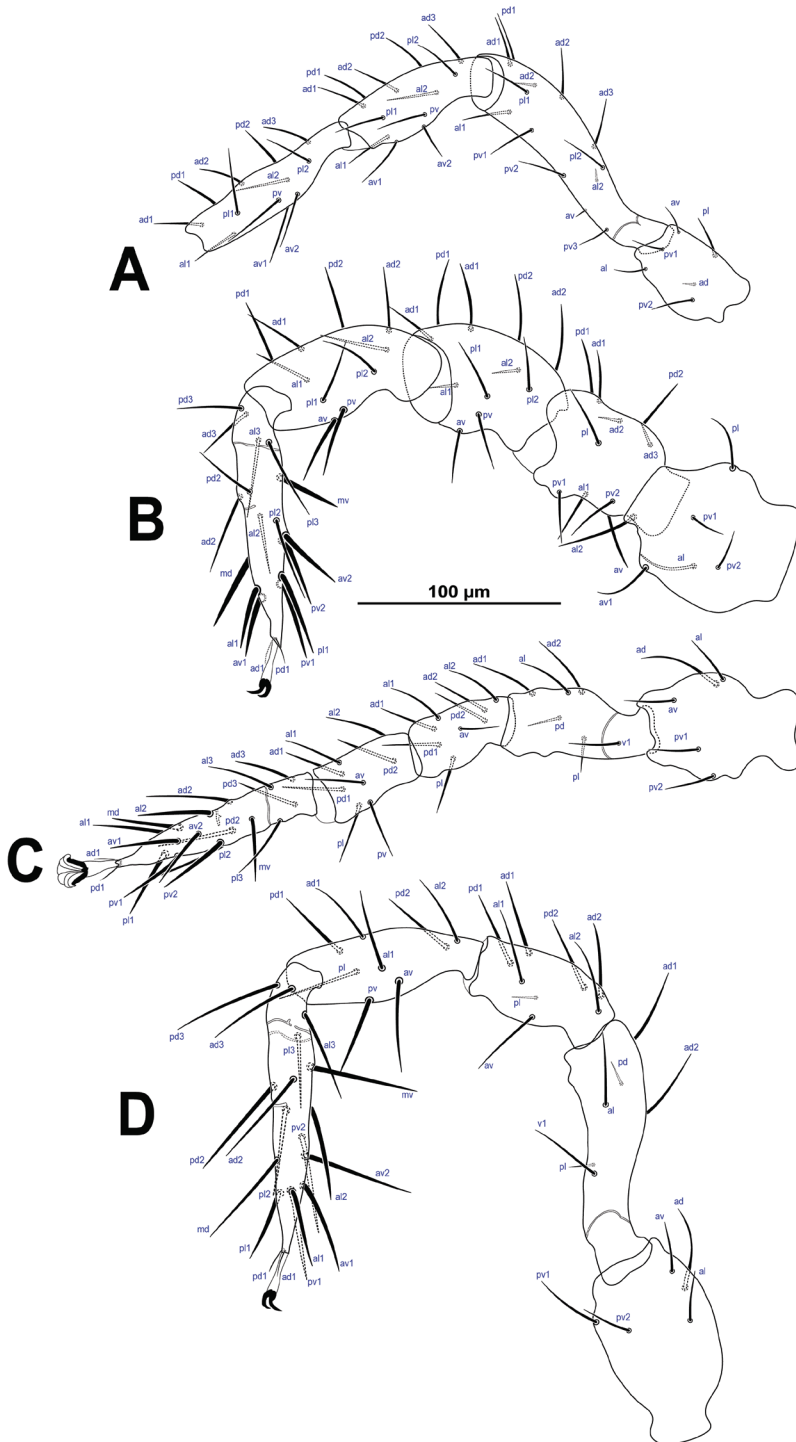
**Figure 5.** *Krantzolaspina angustatus* comb. nov., adult female. Palp, note the ventral spine-like process in palptrochanter.

trochanter I, *av* and *ad*<sub>2</sub> and *al*<sub>2</sub> in femur I, *ad*<sub>2-3</sub> in femur II, *al*<sub>1-2</sub> in genu II, *pl* and *pd* in femur IV and *pl* in genu IV.

**Male.** Unknown.

**Material examined and depository.** • 1♀ Holotype at NSMT (NSMT-Ac 9805) collected in Philippines, Palawan Islands, Olanguan Valley, between Puerto Princesa and Roxas, on litter of tropical forest. • 16♀ vouchers at ESALQ collected in Iran, Kerman Province on soil and litter at the base of *Medicago sativa* (Fabaceae) and *Citrus sinensis* (Rutaceae). New material from Indonesia, Sumatra, Jambi Province, Bukit Duabelas region, upper soil layer (0–3 cm) of oil palm plantation, research site BO2b, 2°04'32.0"S, 102°47'30.7"E, 83.74 m a.s.l. 6♀ on slides as follows: • 1♀ deposited at LIPI (OSAL 00124840); • 1♀ deposited at SMNG (OSAL 00124839 SMNG 2020/62099). • 2♀ deposited at OSAL (OSAL 00124841, 00124842). • 2♀ deposited at ANIC (OSAL 00124843, 00124844). 10♀ in alcohol, as follows: • 2♀ deposited at LIPI, • 3♀ deposited at SMNG, • 2♀ deposited at OSAL and • 3♀ deposited at ANIC. All specimens were collected in November 2013 by B. Klarner. Additional photos of the species are deposited in Ecotaxonomy database at [www.ecotaxonomy.org](http://www.ecotaxonomy.org) (ECOTAX\_ID: 434549).

**Differential diagnosis.** *K. angustatus* comb. nov. significantly differs from *K. rebatii* and *K. solimani* comb. nov. in the following combination of characters: *K. angustatus* has 32 pairs of smooth dorsal setae (except *S5* and *Z5* slightly pilose), while *K. rebatii* and *K. solimani* have 36 pairs of smooth setae, respectively; *K. angustatus* has 15 pairs of setae *r-R* and *UR*-series in the unsclerotised lateral cuticle, whereas *K. solimani* and *K. rebatii* have 13 and 10, respectively; in *K. angustatus* and *K. solimani*, the peritreme is extended anteriorly between coxae I–II at the level of *st1*, while in *K. rebatii*, it is extended beyond coxa I; in *K. angustatus*, a spine-like process is developed in the subcapitulum, while this is absent in *K. rebatii* and *K. solimani*. Further, the



**Figure 6.** *Krantzolaspina angustatus* comb. nov., adult female. **A–D** Legs I–IV, respectively. Coxae I–IV in the Fig. 2.

**Table 1.** Characteristics of the females of *Krantzolaspina angustatus* comb. nov., and some ambiguous or unknown data of *K. rebatii* and *K. solimani* comb. nov.

Characters	<i>K. angustatus</i> (Ishikawa, 1987) comb. nov.	* <i>K. rebatii</i> Datta & Bhattacharjee, 1989	* <i>K. solimani</i> (Metwali, 1983) comb. nov.
Dorsal shield ornamentation	mostly reticulate (smooth on the dorso-central region around bases of <i>z1</i> and <i>J2</i> )	completely smooth?	with tetra- and pentagonal reticulation (except on dorsocentral region of setae <i>j-j</i> , faintly ornamented)
Sternometasternal / ventrianal shield ornamentation	completely reticulate and with the lateral margins covered by some semi-rounded cells	mostly smooth but with lateral margins pointed?/ anterior margin pointed, elsewhere smooth?	mostly with tetra and pentagonal reticulation
Parapodal-peritremal shield ornamentation	slightly reticulate + semi-rounded cells posterior to the coxa IV	completely smooth?	completely smooth?
<sup>1</sup> Setae of opisthogastric cuticle ( <i>JV-ZV</i> )	Seven pairs ( <i>JV3-5, ZV2-5</i> ); <i>JV4-5</i> and <i>ZV4-5</i> pilose	Six pairs ( <i>JV4-5, ZV2-5</i> )?	Six pairs ( <i>JV4-5, ZV2-5</i> )
Deutosternum: no. rows	Nine	three?	?
Leg chetotaxy (Coxa – Tibia)			?
I	2, 6, 13, 12, 12, not counted	?, ?, 10, 11, 11, ?	
II	2, 5, 11, 10, 10, 18	?, 4, 10, 9, ?, ?	
III	2, 5, 6, 8, 8, 18	?, 3, 5, 8, 7, ?	
IV	1, 5, 6, 8, 8, 18	?, ?, 4, 6, 7, ?	

? indicates unknown or uncertain/unclear data. <sup>1</sup>All setae are smooth and moderately long, except when mentioned otherwise. \* holotype not found, presumed lost; characters presented are based on the original description.

arthrodial process in *K. rebatii* has a pair of long unequal arthrodial brushes, whereas the arthrodial process in *K. solimani* and *K. angustatus* has a relatively long arthrodial brush and a narrow fringed arthrodial corona. Additionally, in *K. angustatus*, small metapodal platelets elliptical in shape are present, while in *K. solimani* and *K. rebatii*, they are absent. Lastly, Table 1 provides uncertain/unclear or unknown characters of these species.

**Remarks.** *Krantzolaspina* is a well-defined genus by the unique combination of characters stated above (see diagnosis of the genus). However, a number of characters are also present in other dermanyssine families, for example, well-developed arthrodial brush(es) is/are also present in macrochelid mites, a sternometasternal shield bearing *st1-st4* is shared with species of Pachylaelapidae (Mašán and Halliday 2014) and Ologamasidae (Castilho et al. 2016) and the fusion of genital + ventral + anal shields forming a genitiventrianal shield is shared with two genera of Laelapidae (*Ololaelaps* and *Oloopticus*) (Beaulieu et al. 2019).

Although the genitiventrianal shield is a diagnostic character for *Krantzolaspina*, it is not an exclusive character as it also occurs in other genera of Parholaspididae, such as *Holaspulus*, some species of *Holaspina* and *Proparholaspulus*, as well as in other families, such as Leptolaelapidae genus *Indutolaelaps* Karg, 1997. In addition, this feature occurs in some species of Laelapidae (see above), but in those species, the genitiventrianal shield is hyper-developed posteriorly and occupies most of the opisthogaster and is often named the hologastric shield (Beaulieu et al. 2019).

One particular feature of *Krantzolaspina* is the pointed spur-like process present on the palp trochanter and this character is important for recognising the genus. However, a similar process is present in species (and all post-embryonic stages) of the monotypic family Megalolaelapidae (*Megalolaelaps*), in which the palp trochanter typically bears a large anteroventral horn-like projection. Unfortunately, the function of these processes of the palp trochanter in *Krantzolaspina* and *Megalolaelaps* is unknown (Maśán and Halliday 2014, Cómbita-Heredia et al. 2018). It should be noted that members of Megalolaelapidae are more similar morphologically to Pachylaelapidae and to Macrochelidae of the genus *Neopodocinum* Oudemans (Macrochelidae) than to Parholaspididae (Cómbita-Heredia et al. 2018).

### **Distribution of *Krantzolaspina* spp.**

*Krantzolaspina* species have been collected from soils, mainly disturbed soil and in countries of Southern Asia. However, its distribution is isolated since they are present in Iran, Philippines and recently recorded in Indonesia (see details of locality type and other records, Table 1). A similar pattern of isolated distribution is present in other species of the parholaspidid family (e.g. *Holaspina alstoni* and *Parholaspis kewensis*, *P. meridionalis*) which were collected in botanical gardens from England where these records were based on accidental introduction (Ishikawa 1980c, Latifi et al. 2006) and potentially facilitated by human activity (Latifi et al. 2006). Hypothetically, we believe that these records of *Krantzolaspina* are based on introduced specimens through the trading of vegetal material including soil where they inhabit.

### **Notes on *Indutolaelaps jiroftensis* Hajizadeh et al., 2017 syn. nov. of *K. angustatus* (Ishikawa, 1987) comb. nov.**

This species was described in the genus *Indutolaelaps* Karg, 1997 (Leptolaelapidae), based on a genitiventrianal shield, an epistome with an anteriomedial extension, wider at the base and acute distally and a palp tarsal claw three-tined (Hajizadeh et al. 2017). The misplacement of *I. jiroftensis* in the genus *Indutolaelaps* may suggest some genus-level similarity of *Indutolaelaps* and *Krantzolaspina*. These two genera indeed share several conspicuous characters such as similar shape of the genitiventrianal shield, presence of two pairs of presternal platelets, sternometasternal shield bearing *st1–4*, parapodal shield well-developed and fused with peritrematal shield, epistome with a narrow median projection and lateral margins serrate and 3-tined palptarsal claw. However, both genera which belong to different families can be distinguished by the combination of characters given in Table 2, such as arthrodistal process, number of presternal platelets and preanal and dorsal setae.

Further, the synonymy of *I. jiroftensis* is supported in that it has 32 pairs of dorsal setae, two pairs of presternal platelets, sternometasternal and genitiventrianal shield with four pairs, as well a distinct ornamentation pattern (Hajizadeh et al. 2017 pp 670–671), which are diagnostic characters of the genus *Krantzolaspina* and specifically

**Table 2.** Morphological characteristics of females in the genera *Krantzolaspina* and *Indutolaelaps*.

Morphological characters	* <i>Krantzolaspina</i> Datta & Bhattacharjee, 1989 (Parholaspidae)	** <i>Indutolaelaps</i> Karg, 1997 (Leptolaelapidae)
Arthrothial process	with two arthrothial brush or one arthrothial brush and one narrow fringed arthrothial corona	one fringed arthrothial corona
Presternal platelets	two pairs	one pair
Number of preanal setae in the genitiventrianal shield	three pairs	five pairs
Number of dorsal setae	32–34 pairs	50–55 pairs
Gnathotectum	with a median projection slightly bifurcate, trifurcate or serrate distally and with lateral margins serrate	with a median projection, distally and lateral margins smooth
Deutosternal rows	six, nine	five
Cheliceral dentition	FD usually with four teeth (rarely three) and MD bidentate	FD with three teeth and MD bidentate
Pretarsi	pretarsus I reduced or absent, pretarsi II–IV well developed	Pretarsus I reduced, pretarsi II–IV well developed

The present differential characters are listed in order of importance. <sup>1</sup>All setae are smooth and moderately long, except when mentioned otherwise.

\* based on the present review; \*\* based on the original description of Karg (1997). FD – fixed digit; MD – mobile digit.

of *K. angustatus*. Additionally, the characters present in their drawings (figs 3, 5–7) and our photos (Figs 3B, 4B, E, H, K) of *I. jiroftensis* (Hajizadeh et al., 2017) match the characters from the holotype of *K. angustatus* (see Figs 3A, 4A, D, G, J).

### Notes on *Krantzolaspina rebatii* Datta & Bhattacharjee, 1989

*Krantzolaspina rebatii* Datta & Bhattacharjee, 1989: 411

The holotype of *K. rebatii* was deposited according to Datta and Bhattacharjee (1989) in “Collection of Animal Ecology Laboratory, Department of Zoology, Gauhati University, Guwahati, India”; however, we were unable to locate this type specimen despite significant efforts. A careful study of type material will be essential to identify the diagnostic traits of that species.

Focusing on the original description, we like to mention some discrepancies and/or mistakes that we found between the text and illustrations as follows:

- (1) *Dorsal shield*: “36 pairs of setae” is indicated in the text (Datta and Bhattacharjee 1989:411); however, their illustration (fig. 1b) shows only 34 apparent pairs of setae, although five represented only by sockets (presumably because the setae had fallen off). In addition, it is unclear whether the dorsal shield is smooth or not, as any type of ornamentation seems to be excluded from their original drawings and text.
- (2) *Venter*: The ornamentation seems to be excluded from their original text, but it looks mostly smooth in fig. 1a of Datta and Bhattacharjee (1989) as well the lateral region punctate of the sternometasternal shield and the margin anterior of the genitiventrianal shield.

- (3) *Legs*: Datta and Bhattacharjee (1989) provided an illustration of the legs (Fig. 1i–h), but without accompanying text in the description. The illustrations indicate a reduced number of setae compared with the leg chaetotaxy herein described for *K. angustatus* (Table 1). We presume that some setae were overlooked and not drawn by Datta and Bhattacharjee (1989).

### Notes on *K. solimani* (Metwali, 1983) comb. nov.

*Neoparholaspulus solimani* Metwali, 1983: 459.

Metwali (1983) placed this species in the genus *Neoparholaspulus*, based on some characters that are typical for the genus, such as a genitiventrian shield and one pair of presternal platelets, as well as one pair of metasternal shields free. In addition, Metwali's description of the species includes "metasternal plate well developed and free". However, the description also states that the sternal shield has four pairs of setae and the illustration shows that the metasternal plates are fused to the sternal shield. We have provisionally placed this species in *Krantzolaspina*, based on the presence of 32 pairs of setae in the dorsal shield, two pairs of presternal platelets and the assumption that fig. 2 of Metwali (1983) is inaccurate and that the metasternal plates are indeed fused to the sternal shield. Unfortunately, as the type specimens are lost, this interpretation cannot be confirmed (Reham Abo-Shnaf, personal communication).

### *Krantzolaspina* sp.?

Nawar and El-Sherif (1995: 273) re-described the female of a species that they identified as *Holaspina solimani* and described the male for the first time. Hussein et al. (2002: 1117) reared this species in the laboratory and studied its biology and behaviour. However, the illustrations and description in Nawar and El-Sherif (1995) differ in the grade of fusion of the metasternal plate, as well as the number of setae in the sternal shield from those in Metwali (1983) and we provisionally assume that these two specimens are two different species. Unfortunately, the specimens examined by Nawar and El-Sherif (1995) and Hussein et al. (2002) are lost and this interpretation cannot be confirmed (Reham Abo-Shnaf, personal communication).

In conclusion, the genus *Krantzolaspina* currently includes three valid species *Krantzolaspina angustatus* (Ishikawa, 1987) comb. nov., *K. rebatii* Datta & Bhattacharjee, 1989 and *K. solimani* (Metwali, 1983) comb. nov. Lastly, despite the valuable work undertaken by Krantz (1960), Petrova (1967, 1970, 1977), Ishikawa (1980a, 1980b, 1987b), Datta and Bhattacharjee (1989, 1991), Lee and Lee (2000) and the more recent works by Bhattacharyya and Kheto (2016) for *Proparholaspulus* and by Marchenko (2016) for *Neparholaspis*, it is clear that a revision of the family Parholaspidae is needed to know the current status.



## Acknowledgements

Thanks to Bruce Halliday (CSIRO, Canberra, Australia) for help with literature and comments on *Krantzolaspina solimani* comb. nov. Thanks to Ken-ichi Okumura (NSMT, Tokyo, Japan) for providing the holotype of *Krantzolaspina angustatus* nov. com. NSMT-Ac 9805. Thanks to Raphael Castilho (UNESP, São Paulo, Brazil) for the pictures on the paratypes and information on *Indutolaelaps jiroftensis* Hajizadeh et al., 2017 syn. nov. Thanks to Reham Abo-Shnaf (PPRI, Giza, Egypt) for helping locating *Krantzolaspina solimani* comb. nov. at Cairo University. Thanks to the State Ministry of Research and Technology of Indonesia (RISTEK) for the research permit, the Indonesian Institute of Sciences (LIPI) and Ministry of Forestry (PHKA) for the collection permit, the village heads and, local site owners for granting access to their properties and the many colleagues and helpers for support in the field. Finally, thanks to Alireza Nemati, Frederic Beaulieu and one anonymous reviewer for their valuable suggestions and comments on the manuscript. Financial support was provided by the German Research Foundation (DFG) in the framework of the collaborative German – Indonesian research project CRC990 (EForTS).

## References

- Athias-Henriot C (1971) La divergence néotaxique des Gamasides (Arachnides). Bulletin Scientifique de Bourgogne 28: 93–106.
- Athias-Henriot C (1975) Nouvelles notes sur les Amblyseiini. 2. Le relevé organotaxique de la face dorsale adulte (gamasides protoadéniques, Phytoseiidae). Acarologia 17: 20–29.
- Bai X-L, Ma L-M (2014) Investigations of mesostigmatic mites from Ningxia and neighbouring provinces (Acari) (5). Acta Arachnologica Sinica 23: 42–46.
- Bai X-L, Yan Y, Ma Y (2014) Revising of *Lasioseius multisetus* Ma et Bai, 2006, and descriptions of male and deutonymph of two known species (Acari, Mesostigmata). Acta Arachnologica Sinica 23: 32–36.
- Beaulieu F, Quintero-Gutiérrez EJ, Sandmann D, Klarner B, Widyastuti R, Cómbita-heredia O, Scheu S (2019) Review of the mite genus *Ololaelaps* (Acari, Laelapidae) and redescription of *O. formidabilis* Berlese. 36: 1–36. <https://doi.org/10.3897/zookeys.853.29407>
- Bei N-X, Gu L-Q, Yin S (2004) A new species of the genus *Parholaspulus* from China (Acari, Mesostigmata, Parholaspidae). Acta Zootaxonomica Sinica 29: 708–710.
- Bei N-X, Chen W-P, Zhao Y-Y, Yin S-G, Wu Y-H (2009) New records of Mesostigmatic mites (Acari: Gamasina) from China. Entomotaxonomia 31: 64–67.
- Berlese A (1905) Acari nuovi. Manipulus IV. Acari di Giava. Redia 2: 154–176 [Plates 15–17].
- Berlese A (1918) Centuria quarta di Acari nuovi. Redia 13: 115–192.
- Bhattacharyya SA, Kheto S (2016) A new species of *Proparholaspulus* (Acari: Parholaspidae) from India. Acarologia 56: 633–637. <https://doi.org/10.1051/acarologia/20164145>

- Bhattacharyya SK (1977) A new *Blattisocius* and first record of *Gamasholaspis browningi* (Acarina, Mesostigmata) from the kumaon Himalaya. *Indian Journal of Acarology* 2: 21–23.
- Castilho RC, Silva ES, DeMoraes GJ, Halliday B (2016) Catalogue of the family Ologamasidae Ryke (Acari: Mesostigmata). *Zootaxa* 4197: 1–147. <https://doi.org/10.11646/zootaxa.4197.1.1>
- Chen W, Guo X, Gui Y (1994) A new species of *Gamasholaspis* from China (Acari: Parholaspidae). *Acta Arachnologica Sinica* 3: 61–64.
- Cómbita-Heredia O, Quintero-Gutiérrez EJ, Klompen H (2018) Ontogeny of *Megalolaelaps colossus* sp. nov. (Acari: Megalolaelapidae), an enigmatic symbiont of dung beetles (Coleoptera: Scarabaeidae) in Colombia. *Systematic & Applied Acarology* 23: 1102–1124. <https://doi.org/10.11158/saa.23.6.7>
- Datta AK, Bhattacharjee PC (1989) *Krantzolaspina rebatii*, a new genus and a new species from India. In: Channabosavanna GE, Viraktamath CA (Eds) *Progress in Acarology*. Vol. 1. Oxford and IBH Publishing, Brill, Leiden, 411–414.
- Datta AK, Bhattacharjee PC (1991) *Hyattolaspina hiteni*, a new genus and new species of the family Parholaspididae (Acari, Mesostigmata) from Jorhat, India. In: Veeresh GK, Rajagopal D, Viraktamath CA (Eds), *Advances in Management and Conservation of Soil Fauna*. Oxford & IBH Publishing Co, New Delhi, India, 717–720.
- Drescher J, Rembold K, Allen K, Beckscha P, Buchori D, Clough Y, Faust H, Fauzi AM, Gunawan D, Hertel D, Irawan B, Jaya INS, Klarner B, Kleinn C, Knohl A, Kotowska MM, Krashevska V, Krishna V, Leuschner C, Lorenz W, Mejjide A, Melati D, Steinebach S, Tjoa A, Tschardt T, Wick B, Wiegand K, Kreft H, Scheu S (2016) Ecological and socio-economic functions across tropical land use systems after rainforest conversion. *Phylosophicla Transactions B* 371: 20150275. <https://doi.org/10.1098/rstb.2015.0275>
- Evans GO (1956) On the classification of the family Macrochelidae with particular reference to the subfamily Parholaspidinae (Acarina-Mesostigmata). *Proceedings of the Zoological Society of London* 127: 345–377. <https://doi.org/10.1111/j.1096-3642.1956.tb00474.x>
- Evans GO (1963) Observations on the chaetotaxy of the legs in the free-living Gamasina (Acari: Mesostigmata). *Bulletin of the British Museum (Natural History)*. 10: 275–303. <https://doi.org/10.5962/bhl.part.20528>
- Evans GO (1963) Some observations on the chaetotaxy of the pedipalps in the Mesostigmata (Acari). *Annals and Magazine of Natural History* 6: 513–527. <https://doi.org/10.1080/00222936308651393>
- Evans GO, Till WM (1965) Studies on the British Dermansysidae (Acari: Mesostigmata). Part 1. External morphology. *Bulletin of the British Museum (Natural History)*, Zoology 13: 247–294. <https://doi.org/10.5962/bhl.part.16752>
- Gu Y-M (1984) A new species of the genus *Gamasolasphis* from China (Acarina: Parholaspididae). *Acta Zootaxonomica Sinica* 9: 375–377.
- Gu Y, Guo X (1996) A new species of *Gamasholaspis* from China (Acari: Parholaspididae). *Acta Zootaxonomica Sinica* 21: 309–311.
- Hajizadeh J, Mortazavi S, Balloch-Shahriari N, Castilho RC (2017) A new species of the genus *Indutolaelaps* (Mesostigmata: Leptolaelapidae) from Iran. *Linzer* 49: 669–676.

- Hussein AM, Ali Fatma S, Nawar MS, Allam SA (2002) Biological and ecological studies on the soil predatory mite *Holaspina solimani* (Metwali) (Parholaspidae: Gamasida). Egyptian Journal of Agricultural Research 80: 1117–1131.
- Ishikawa K (1966) Studies on the Mesostigmatic mites of Japan. I. Some new species of Parholaspidae. Reports of Research of Matsuyama Shinonome Junior College 2: 99–110.
- Ishikawa K (1969) Taxonomic investigations on free-living mites in the subalpine forest on Shiga Heights IBP area. I. Mesostigmata (Part 1). Bulletin of the National Science Museum, Tokyo 12: 39–64.
- Ishikawa K (1976) Taxonomic investigation on mesostigmatid mites (Acarina) from Pasoh Forest Reserve, Malay Peninsula. Nature Life SE Asia 7: 231–252.
- Ishikawa K (1979) Taxonomic and ecological studies in the family Parholaspidae (Acari, Mesostigmata) from Japan (Part 1). Bulletin of the National Science Museum. Series A. Zoology 5: 249–269.
- Ishikawa K (1980a) Taxonomic and ecological studies in the family Parholaspidae (Acari, Mesostigmata) from Japan (Part 2). Bulletin of the National Science Museum. Series A. Zoology 6: 1–25.
- Ishikawa K (1980b) Taxonomic and ecological studies in the family Parholaspidae (Acari, Mesostigmata) from Japan (Part 3). Bulletin of the National Science Museum. Series A. Zoology 6: 153–174.
- Ishikawa K (1987a) Occurrence of *Proparholaspulus* (Acari, Parholaspidae) in the Philippines. Bulletin of the National Science Museum., Tokio, Series A 13: 79–84.
- Ishikawa K (1987b) The family Parholaspidae (Acarina, Meosostigmata) in Japan. In: Hanxi Y, Zhan W, Jeffers JNR, Ward PA (Eds), ITE-Symposium 20. Antu, Jilin province, China., 91–93.
- Ishikawa K (1993) Occurrence of *Holaspulus* (Acarina, Gamasida, Parholaspidae) in Philippines. Bulletin of the National Science Museum. Series A. Zoology 19: 93–110.
- Ishikawa K (1994) Two new species of the Genus *Holaspulus* (Acarina: Gamasida: Parholaspidae) from the Ryukyu islands, Japan. Zoological Science 11: 139–142. Available from: <http://biostor.org/reference/106551>.
- Ishikawa K (1995a) A new *Gamasholaspis* (Acarina, Gamasida, Parholaspidae) collected from a natural cave of Japan. Special Bulletin of the Japanese Society of Coleopterology 4: 111–114.
- Ishikawa K (1995b) Two new species of the genus *Holaspulus* (Acari, Gamasida, Parholaspidae) from Japan. Acarologia 36: 185–190. Available from: <http://www1.montpellier.inra.fr/CBGP/acarologia/article.php?id=2278>.
- Ishikawa K (2002) A new species of the genus *Parholaspulus* (Acarina: Gamasina, Parholaspidae) from a cave of southwest Japan. Journal of the Speleological Society of Japan 27: 27–31.
- Ishikawa K, Saichuae P (1997) Two new gamasid mites (Acari, Gamasida, Podocinidae and Parholaspidae) from the tropical rain forests of Khao Yai Province in Thailand. Journal of the Acarological Society of Japan 6: 65–71. <https://doi.org/10.2300/acari.6.65>
- Jung C, Won J, Marquardt T, Kaczmarek S (2010) Species richness of soil gamasid mites (Acari: Mesostigmata) in fire-damaged mountain sites. Journal of Asia-Pacific Entomology 13: 233–237. <https://doi.org/10.1016/j.aspen.2010.04.001>

- Kadkhodae FE, Nemati A, Kocheili F (2013) Some mesostigmatid mites from Iran with their world distribution. *Journal of Crop Protection* 2: 127–138.
- Kempson D, Lloyd M, Ghelardi R (1963) A new extractor for woodland litter. *Pedobiologia* 3: 1–21.
- Kontschaán J, Jeon MJ, Hwang JM, Seo HY (2015) New records to the Korean soil dwelling Mesostigmata fauna (Acari). *Journal of Species Research* 4: 33–44. <https://doi.org/10.12651/JSR.2015.4.1.033>
- Krantz GW (1960) A re-evaluation of the Parholaspinae Evans 1956 (Acarina: Mesostigmata: Macrochelidae). *Acarologia* 2: 393–433. <http://www1.montpellier.inra.fr/CBGP/acarologia/article.php?id=4020>
- Lee SY, Lee WK (1996a) Three soil mites of the Family Parholaspidae and Podapocinidae (Mesostigmata, Acari) from Korea. *Korean Arachnology* 12: 131–137. [In Korean]
- Lee SY, Lee WK (1996b) Three soil mites of the genus *Holaspina* (Parholaspidae: Mesostigmata) from Korea. *Korean Journal of Soil Zoology* 1: 24–27. [In Korean]
- Lee SY, Lee WK (2000) Taxonomic study of Parholaspid mites (Acari, Mesostigmata) in Korea. *The Korean Journal of Systematic Zoology* 16: 105–112.
- Lee WK (2014) Arthropoda: Arachnida: Acari: Astigmata, Mesostigmata: Acaridia, Parholaspidae, Macrochelidae. *Invertebrate fauna of Korea* 21: 1–98. <http://ci.nii.ac.jp/ncid/BB20942173.bib> [February 14, 2020]
- Lee WK, Cho BK (1995) Taxonomic approach to scabies mites of human and animals and their prevalence in Korea. *Korean Journal of Parasitology* 33: 85–94. <https://doi.org/10.3347/kjp.1995.33.2.85> [In Korean]
- Liang L, Hu C (1993) A new species and a new record of the genus *Proparholaspulus* Ishikawa from China (Acari: Mesostigmata: Parholaspidae). *Acta Zootaxonomica Sinica* 18: 63–65.
- Lindquist E (1994) Some observations on the chaetotaxy of the caudal body region of gamasine mites (Acari, Mesostigmata), with a modified notation for some ventrolateral body setae. *Acarologia* 35: 323–326.
- Lindquist E, Evans GO (1965) Taxonomic concepts in the Ascidae, with a modified setal nomenclature for the idiosoma of the Gamasina (Acarina: Mesostigmata). *Memoirs of the Entomological Society of Canada* 97: 5–66. <https://doi.org/10.4039/entm9747fv>
- Ma L-M (1998) Two new species of the genus *Parholaspulus* (Acari: Gamasina: Parholaspidae). *Acta Arachnologica Sinica* 7: 81–85.
- Ma L-M (2004) Descriptions on a new species of the genus *Gamasholaspis* and male and nymphs of *Gamasholaspis eotheromydis* Gu (Acari: Gamasina: Parholaspidae). *Entomotaxonomia*: 227–233.
- Ma L-M (2010) Descriptions of three new species and new discovery of male and deutonymph of a known species on the genus *Holaspulus* (Acari: Mesostigmata: Parholaspidae). *Acta Arachnologica Sinica* 19: 70–78.
- Ma L-M (2012) A new species of the genus *Parholaspulus* and a new species of the genus *Gamasholaspis*, with description of male of *Gamasholaspis duyunensis* (Acari: Mesostigmata: Parholaspidae). *Acta Arachnologica Sinica* 21: 1–7.
- Ma L-M, Yan J-Z (2001) Three newly recorded genera with three new species of the family Parholaspidae from China (Acari: Gamasina). *Acta Zootaxonomica Sinica* 26: 27–34.

- Ma L-M, Lin J-Z (2006) On a new species of the genus *Gamasholaspis* and a new species of the genus *Holaspulus* (Acari: Mesostigmata: Parholaspidae). *Acta Arachnologica Sinica*: 75–77.
- Ma L-M, Lin J-Z (2011) New species of the genus *Gamasholaspis* and a new species of the genus *Lattinella* from Wuyi Mountain, Fujian Province, China (Acari: Mesostigmata: Parholaspidae). *Acta Arachnologica Sinica* 20: 71–76.
- Ma L-M, Lin J-Z (2013) Three new species of the genus *Gamasholaspis* and a new species of the genus *Parholaspulus* (Acari: Mesostigmata: Parholaspidae). *Acta Arachnologica Sinica* 22: 70–77.
- Ma L-M, Lin J-Z (2014a) Two new species and a new record of the genus *Gamasholaspis* from Mainland, China (Acari: Mesostigmata: Parholaspidae). *Acta Arachnologica Sinica* 23: 8–12.
- Ma L-M, Lin J-Z (2014b) Two new species of the genus *Gamasholaspis* (Acari: Mesostigmata: Parholaspidae). *Acta Arachnologica Sinica* 23: 8–12.
- Ma L-M, Lin J-Z (2015) A new species of the genus *Lattinella* (Acari: Mesostigmata: Parholaspidae). *Acta Arachnologica Sinica* 24: 21–23.
- Ma L, Yin X (1999) Two new species of the family Parholaspidae (Acari, Gamasina). *Entomotaxonomia* 21: 74–78.
- Marchenko II (2016) A new species of *Neparholaspis* (Acari: Parholaspididae) from Russia, with additional information on *Neparholaspis evansi* Krantz, 1960. *Zootaxa* 4154: 453–465. <https://doi.org/10.11646/zootaxa.4154.4.5>
- Mašán P, Halliday B (2014) Review of the mite family Pachylaelapidae (Acari: Mesostigmata). *Zootaxa* 3776: 1–66. <https://doi.org/10.11646/zootaxa.3776.1.1>
- Metwali SM (1983) A new species of *Neoparholaspulus* (Acarina Parholaspidae Evans 1956) from Egypt. *Annals of Agricultural Science, Moshtohor* 19: 459–465.
- Moraza ML, Peña MA (2006) Two new taxa of Parholaspidae Evans, 1956 (Acari, Mesostigmata) from Tenerife (Canary Islands). *Graellsia* 62: 75–86. <https://doi.org/10.3989/graelisia.2006.v62.i1.27>
- Nawar MS, El-Sherif AA (1995) Redescription of the female of *Holaspina solimani*, with a description of the male (Acari: Parholaspididae). *Acarologia* 36: 273–276.
- Petrova AD (1967a) Mites of the family Parholaspidae Krantz, 1960 (Parasitiformes, Gamasoidea) in the USSR. *Byulleten Moskovskogo Obshchestva Ispytatelei Prirody (Biology)* 72: 38–55.
- Petrova AD (1967b) Taxonomic structure of the family Parholaspidae Krantz, 1960 (Parasitiformes, Gamasoidea). *Scientific Repots Higher School, Biological Sciences* 41: 15–26. [In Russian]
- Petrova AD (1970) Mites of the family Parholaspidae in the USSR, a new elements of the Manchurio-Chinese fauna (Parasitiformes, Gamasoidea). In: *Oribatid (Oribatei) and their role in soil-forming processes*. *Zoologijos ir Parazitologijos Institutas (Lietuvos TSR Moks)* (Lietuvos TSR Mokslo Akademija, Vilnius, 45–54. [In Russian]
- Petrova AD (1977) Family Parholaspidae. In: Ghilarov MS, Bregetova NG (Eds), *Handbook for the identification of soil inhabiting mites. Mesostigmata*. Nauka, Leningrad, 315–346. [In Russian]
- Petrova AD, Tascava EZ (1968) Gamasoid mites (Parasitiformes, Gamasoidea) from southern China. *Report II. Zoologicheskii Zhurnal* 47: 1179–1191. [In Russian]

- Rintelen K Von, Arida E, Häuser C (2017) A review of biodiversity-related issues and challenges in megadiverse Indonesia and other Southeast Asian countries. *Research Ideas and Outcomes* 3: e20860: 1–16. <https://doi.org/10.3897/rio.3.e20860>
- Tseng YH (1993) A taxonomic study of free-living gamasine mite family Parholaspididae Krantz (Acari: Mesostigmata) in Taiwan. *Journal of the Taiwan Museum* 46: 9–131.
- Vitzthum H (1926) Malayische Acari. *Treubia* 8: 1–198.
- Willmann C (1940) Neue Milben aus Höhlen der Balkanhalbinsel, gesammelt von Prof. Dr. K. Absolon, Brünn. *Zoologischer Anzeiger* 130: 209–218.
- Yin S, Bei N (1993) Two new species and four new records of the genus *Parholaspulus* from China (Acari: Parholaspidae). *Acta Zootaxonomica Sinica* 18: 434–437.
- Yin S, Bai N-X, Lu CJ (1999) A new species of *Krantzolaspis* from Liaoning, China (Acari: Parholaspidae). *Journal of Shenyang Agricultural University* 30: 517–519.
- Yin SK, Cheng CL, Chang CC (1964) A preliminary survey of the family Macrochelidae from northeastern China with descriptions of two new species. *Acta Zootaxonomica Sinica* 1: 320–324.