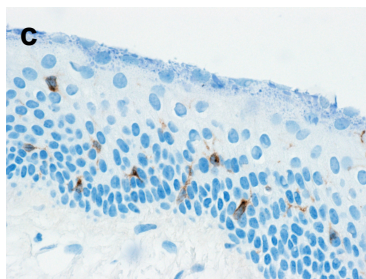
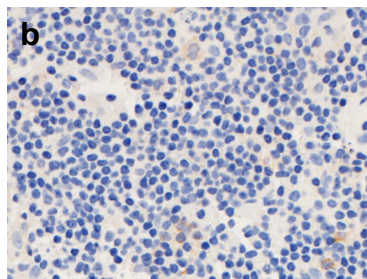
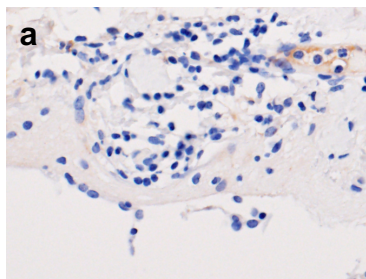
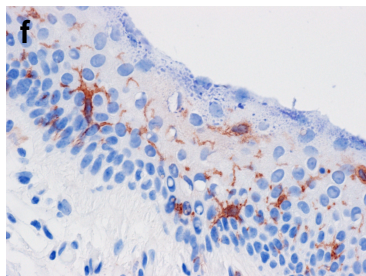
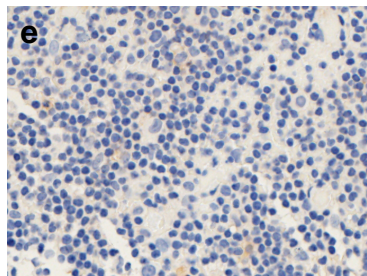
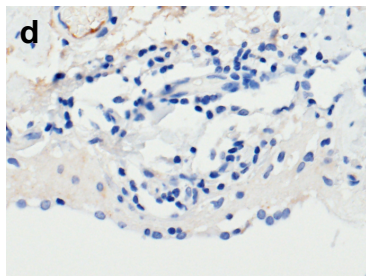


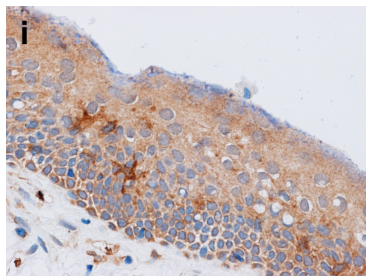
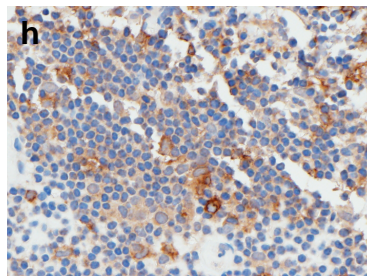
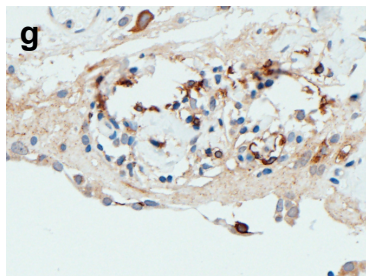
Langerin



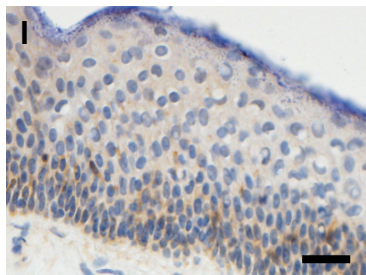
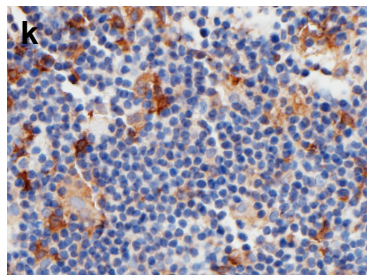
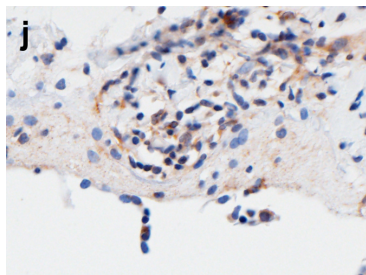
CD1a



CD1c



CD205



Online Resource 2. Dendritic cells in the ovarian teratoma. Directly associated with the CNS-like tissue (**a,d,g,j**) a small perivascular inflammatory infiltrate did not harbor typical Langerin- or CD1a-positive dendritic cells (DCs), as regularly found in the epidermis. Also, no CD205-positive classical DCs were observed. However, a few CD1c/BDCA-1-positive DCs were identified. In teratoma-associated lymphoid tissue classical DC subsets expressing CD1c/BDCA-1 as well as classical DCs expressing CD205, but no CD1a- and Langerin-positive DCs, were found (**b,e,h,k**). In the epidermis of teratoma-derived skin tissue DCs expressing CD1a, CD1c and Langerin were present, being negative for CD205 (**c,f,i,l**). Scale bar length: 20 μm .